
Service Kit Catalogue

MGE and MLE Model K



1. MGE and MLE model K3
MGE160, MGE180, MLE160, MLE180 3

1. MGE and MLE model K

MGE160, MGE180, MLE160, MLE180

50/60 Hz

Bearing, kit

Description	Type	Kit no.
Kit, ball bearing	6309.Z.C4-6309.Z.C4	92954910
	7309.BE-6309.Z.C4	92954911
	6310.Z.C4-6310.Z.C4	92954912
	7310.BE-6310.Z.C4	92954913

Content

Pos.	Description	Quantity
153	Ball bearing, drive end	1
154	Ball bearing, non-drive end	1
156c, 156d	Seal ring for drive end and non-drive end	2
157	O-ring	0/1
158	Waved washer	1/2

Bearing, spare

Description	Type	Kit no.
Angular bearing	7309.BE	92963069
	7310.BE	92963150
Ball Bearing	6309.Z.C4	92963067
	6310.Z.C4	92963068
	6309.2Z.C4.SYN	92963152
	6310.2Z.C4.GWF	92963158
Hybrid angular bearing	7309.BE.HYB	92963154
	7310.BE.HYB	92963155
	6309.Z.C4.HYB	92963151
Hybrid ball bearing	6309.2Z.C4.SYN.HYB	99588270
	6310.Z.C4.HYB	92963153
	7310.B.2CS.SYN.HYB	92963156
	6310.2Z.C4.SYN.HYB	92963157

Bearing plate

Description	Size	Kit no.
Kit, Bearing plate complete	160	92965541
	160 SF	92965542
	160-180	92965543

Content

Pos.	Description	Quantity
155a	Bearing plate	1
207		1
207, 208	Hex socket head cap screw	3

Blanking plug

Description	Kit no.
Kit, Blanking plug MGE160/180, metric	92907278

Description	Kit no.
Kit, Blanking plug MGE160/180, NPT	92907279

Content

Pos.	Description	Size	Quantity
300	Metric	M40	1
		M20	6
	NPT	1" NPT	1
		1/2" NPT	6

Control box, complete

Description	Functional module	Control panel	Kit no.
Kit, Control box cpl. EBAO, Metric		HMI 200	93115709
Kit, Control box cpl. EBAO, NPT	FM310		93115720
Kit, Control box cpl. EDAO, Metric		HMI 300	92907257
Kit, Control box cpl. EDAO, NPT			92907258
Kit, Control box cpl. FFAO, Metric		HMI 201	93115721
Kit, Control box cpl. FFAO, NPT	FM311		93115722
Kit, Control box cpl. FHAO, Metric		HMI 301	93115723
Kit, Control box cpl. FHAO, NPT			93115724

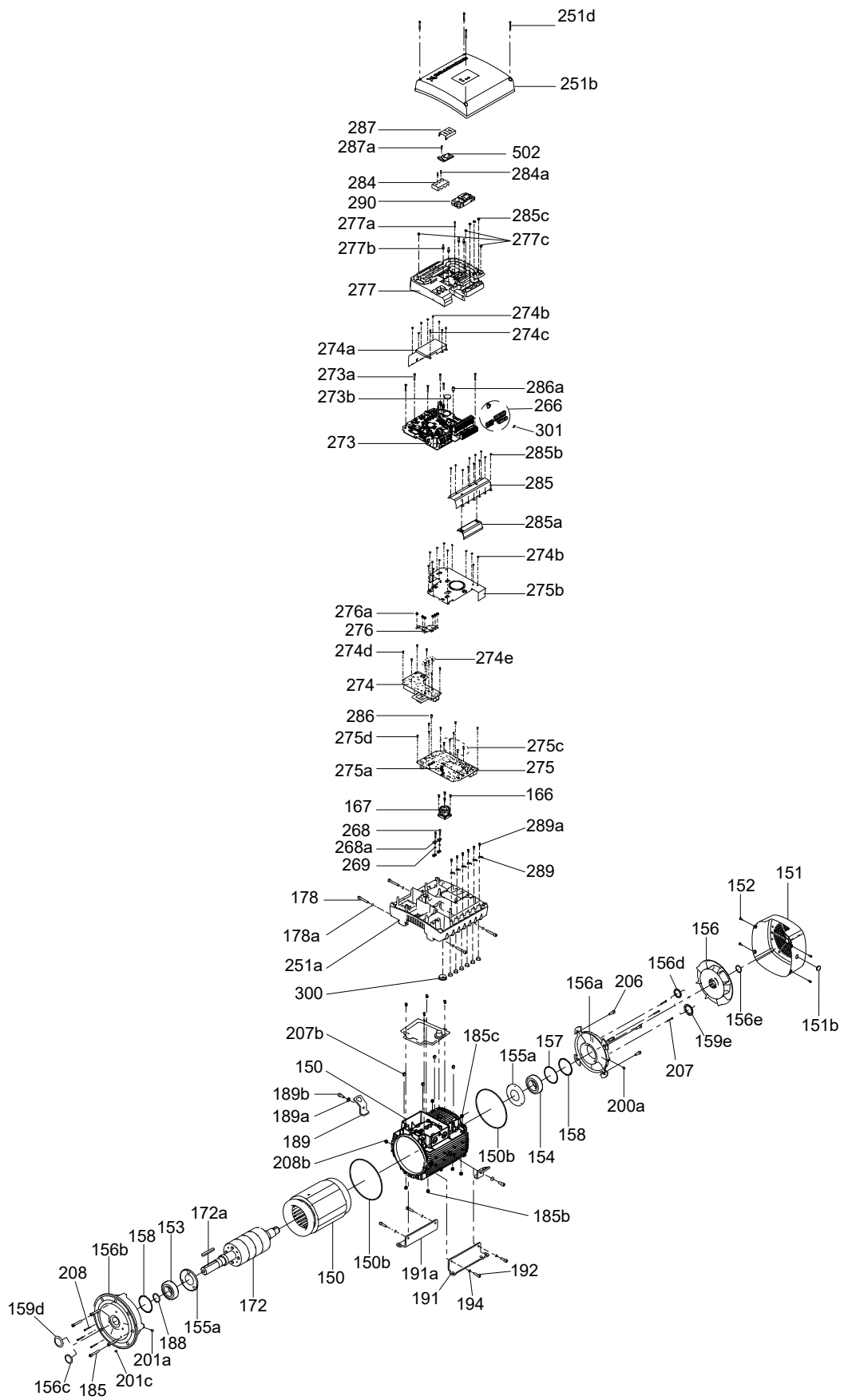
Control box, lower part complete

Description	Kit no.
Kit, Lower part cpl., Metric	92907272
Kit, Lower part cpl., NPT	92907273

Content

Pos.	Description	Quantity
251a	Control box, lower part	1
275	Power board	1
274	Filter board	1
276	Busbar	1
277	Isolation cover	1
277b	Spring relief	4
275a	Pin header	1
300	Blanking plugs	7
289	Wire clamps	6
268a	Earth knot	4
275b	Box for EMC, power board cpl.	1
274a	Box for EMC, filter board cpl.	1
167	Ferrite core	1
166, 268, 269, 274b, 274d, 274e, 275c, 276a, 277c, 285c, 289a	Screws, nuts, washers and spacers	-

MGE and MLE Model K



TM082329

Control box, upper part complete

Description	Type	Kit no.
Kit, Control box upper part cpl.	Basic (HMI 100)	92907259
	Standard (HMI 200)	92907271
	Graphical (HMI 300)	92907270

Content

Pos.	Description	Quantity
251b	Control box upper part	1
251d	Pan head thread forming screw	4

Control panel

Pos.	Model	Description	Kit no.
290	HMI 100	Basic	98939975
	HMI 101	Basic, without radio	98939976
	HMI 200	Standard	98939973
	HMI 201	Standard, without radio	98939974
	HMI 300	Graphical	98939971
	HMI 301	Graphical, without radio	98939972

Cover for CIM

Pos.	Description	Kit no.
287	Kit, Cover for CIM	98330622

Cover for mains terminals

Pos.	Description	Kit no.
284	Kit, Cover for Mains	92907280

Cover for stator cables

Description	Kit no.
Kit, Cover for stator cables	92965484

Content

Pos.	Description	Quantity
285	Cover for stator cables, upper	1
285a	Cover for stator cables, lower	1
285b	Screw	11

End shield (Non-drive end)

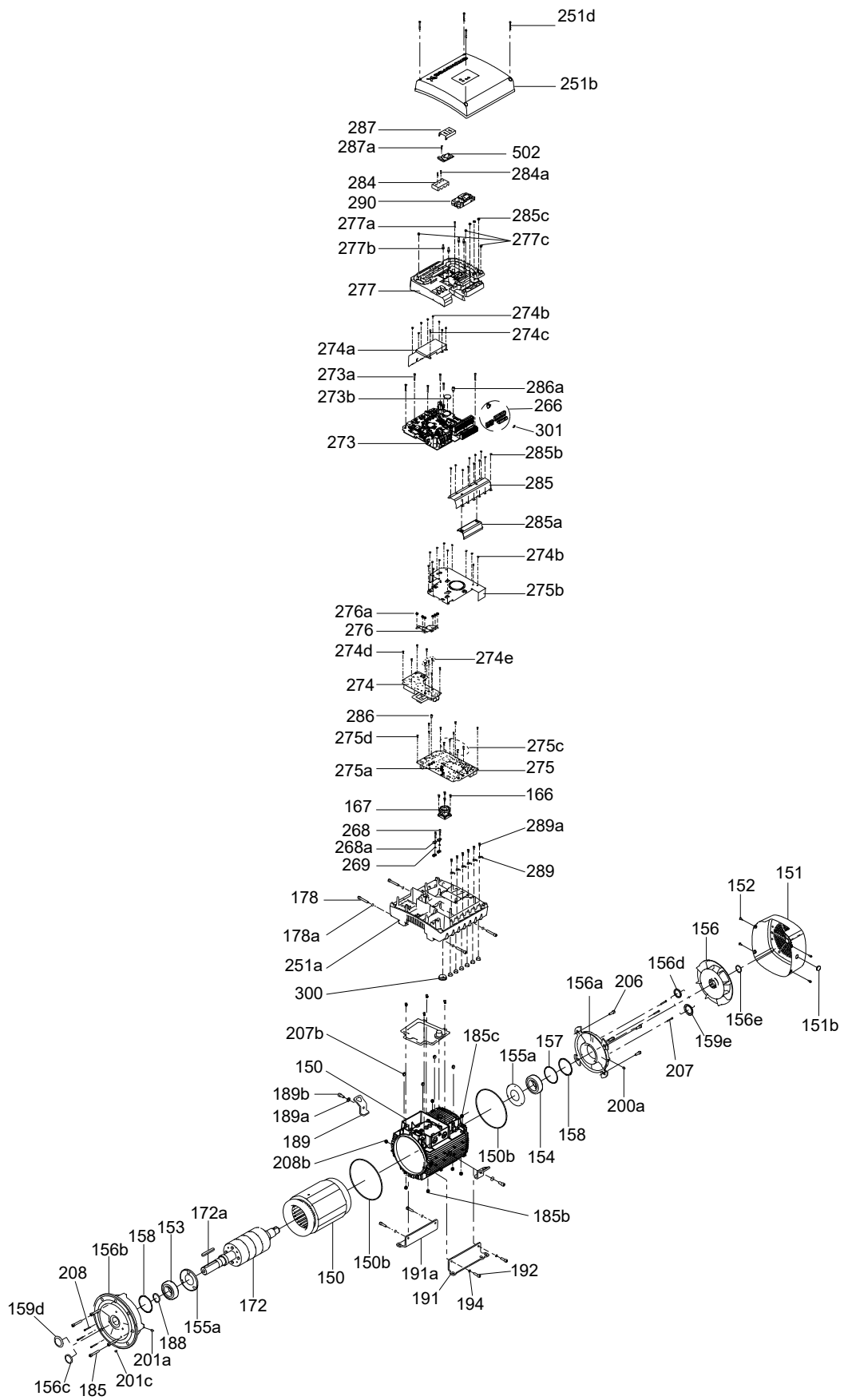
Motor type	Frame size	Regreasing	End shield type	Flange size	IP class	Kit no.
MGE	160M	Yes	IM B5/V1/B35	FF300	IP55	92960951
	160MA					
	160MD					
	160LB					
	160LE					
	160LB	No			IP66	92960952
	160M					
	160LB					
	160LE					
	160MA					
160MD	Yes	IP55/ IP66	92960954			
160M						
180MC						
180MF						
180MH						
180LG	No	IP55	92960955			
180LB						
180MA						
180MC						
180MF						
MLE	160M	Yes	NEMA type C/TC NEMA type C/TC with foot	254/256 TC	IP55	92960951
	160A					
	160D				IP66	92960952
	160E					
	160M					
	160L					
	160L					
180L	284/286 TC	IP55/ IP66	92960954			
180M						

Content

Pos.	Description	Quantity
156a	End shield	1
200a	Grease nipple ¹⁾	1
158	Waved washer	2
150b	O-ring	1
206	Hex socket head cap screw	4
207b	Nut	4
156d	Seal ring (IP55)	1
159e	Gamma ring (IP66)	1

¹⁾ Only for end-shields with regreasing.

MGE and MLE Model K



TM082329

Fan

Motor type	Frame size	P2 [kW]	P2 [hp]	Speed [rpm]	Direction of rotation	Kit no.
	160M	11	15	1450-2000/2200	Clockwise/counter clockwise	96796718
	160L	15	20			
	180M	18.5	25	1750-2200	clockwise	92960873
		180L	22			
MGE, MLE		11	15	2900-4000	Counter clockwise	96796716
		160M	15	20	3400-4000	Clockwise
	160L	18.5	25	3400-4000	Counter clockwise	96796652
	180M	22	30			
		26	-	4000-5200	Clockwise	96796650

Content

Pos.	Description	Quantity
156	Fan	1
156e	Retaining ring	1

Fan cover

Description	Kit no.
Kit, Fan cover	96830826

Content

Pos.	Description	Quantity
151	Fan cover	1
151b	Diaphragm nipple	1
152	Pan head screw	4

Filter board



The kit covers both the C2 and C3 EMC emission categories.

Description	Kit no.
Kit, Filter board	92907274

Content

Pos.	Description	Quantity
274	Filter board	1
274d	Torx screw	6
274e	Slot cheese head screw	3

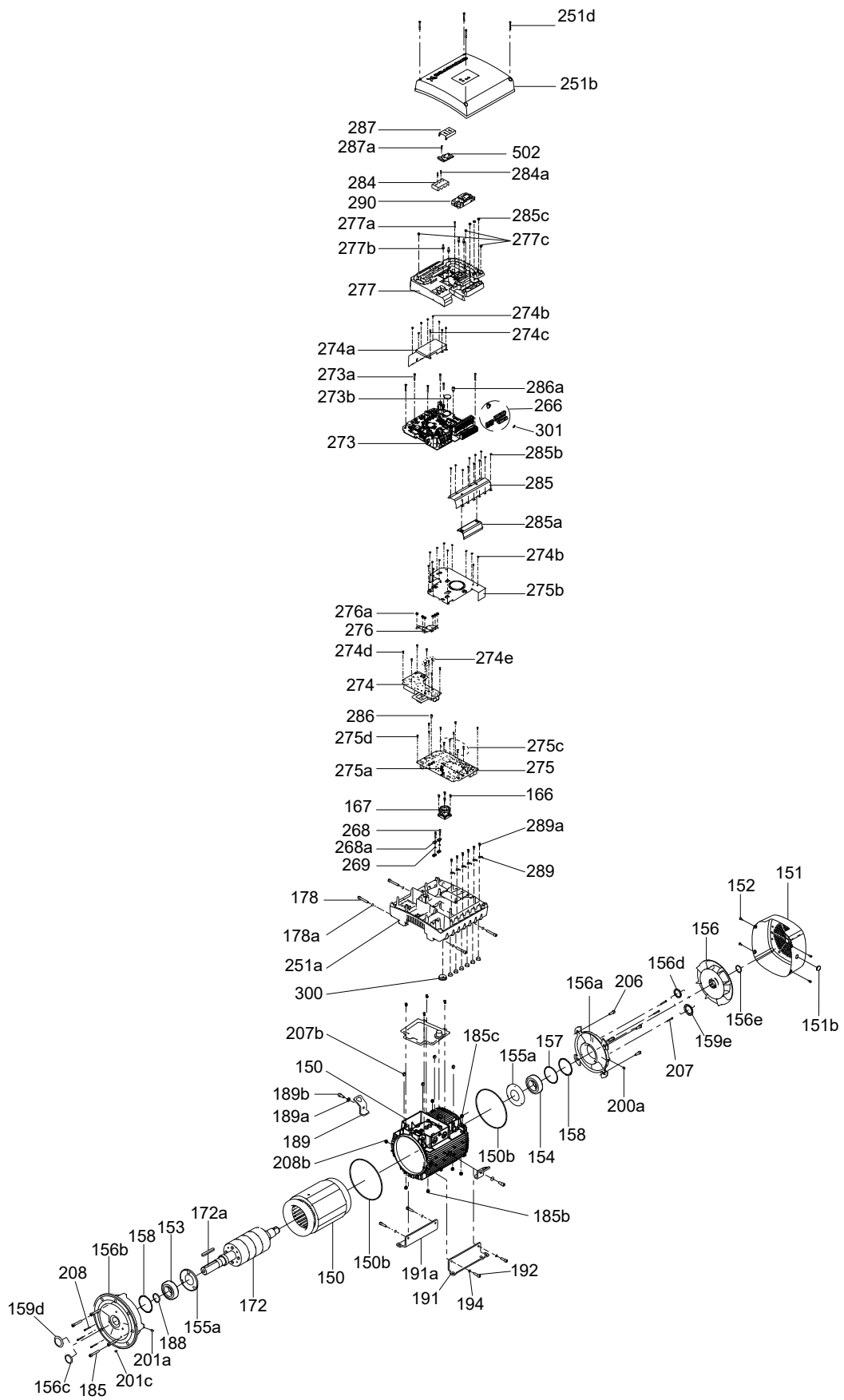
Flange (Drive end)

Motor type	Frame size	Regreasing	Flange type	Flange size	IP class	Kit no.		
	160LB	No	FF300	IM B5/V1/B35	IP55/66	92964447		
	160LE							
	160MA							
	160MD							
	MGE	160LB	Yes	-	IM B3		92964451	
		160LE						
		160MA						
		160MD						
		MLE	160LB	Yes	FF300	IM B5/V1/B35	IP55/66	92964446
			160LE					
160MA								
160MD								
			160LB	No	-	IM B3		92964448
			160MA					
	180LG							
	180MC							
			180MF	No	-	IM B5/V1/B35		92964449
			180MH					
		180MC						
		180MF						
		MLE	160A	Yes	254/256 TC	NEMA type C/TC		92964453
			160E					
160B								
180C								
180F								
180G								

Content

Pos.	Description	Quantity
156b	Flange	1
208b	Nut	4
185	Hex socket head cap screw	4
150b	O-ring	1
156c	Seal ring (IP55)	1
159d	Gamma ring (IP66)	1

MGE and MLE Model K



TM082329

Foot

Motor type	Frame size	P2 [kW]	P2 [hp]	Speed [rpm]	Kit no.
MGE	160M	11	15	2900-4000	96796666
		15	20	3400-4000	
	180M	18.5	25	1450-2000	96796804
		22	30	/2200	
	180L	11	15	1450-2000	92962165
		15	20	/2200	
		18.5	25	2900-4000	
180M	22	30	2900-4000	92962166	
	26	-	3500-4000		
MLE	160M	11	15	1750-2200	92962167
		15	20	3400-4000	
	160L	15	20	3500-4000	
	160L	18.5	25	3500-4000	92962168
	180M				
180M	22	30	1750-2200	92962169	
180L					

Content

Pos.	Description	Quantity
191	Foot, right	1
191a	Foot, left	1
192	Hex socket head cap screw	4
194	Lock washer	4

Functional module

Description	Kit no.
FM310	92907254
FM110	92907255
FM311	92907256

Content

Pos.	Description	Quantity
273	Functional module	1
273a	Pan head screw	5
275a	Pin header	1
286a	Spacer	1

Gamma ring (IP66)

Pos.	Description	Quantity	Kit no.
159d/159e	45 x 62 x 4,5	2	92964556
	50 x 70 x 5,5	2	92964557

Isolation cover

Pos.	Description	Kit no.
277	Kit, Isolation cover	92907281

Content

Pos.	Description	Quantity
277	Isolation cover	1
277a	Pan head screw	1
277c	Screw	3
277b	Spring relief	4

Key

Pos.	Description	Size	Kit no.
172a	Parallel key	12 x 8 x 90	96279873
		14 x 9 x 100	96796817

Lifting eye

Description	Kit no.
Kit, lifting eye	92958602

Content

Pos.	Description	Quantity
189	Lifting eye	2
189a	Washer	2
189b	Hex socket head cap screw	2

Lubrication nipple

Pos.	Description	Kit no.
200a, 201a	Kit, Lubrication nipple	96796671

O-ring

Pos.	Description	Quantity	Kit no.
150b	D235x4	2	92962977
157	D100x3	1	92952010

Power board

Description	Kit no.
Kit, Power board	92907275

Content

Pos.	Description	Quantity
275	Power board	1
275c	Socket pan head screw	4
275d	Torx screw	7
286	Spacer	1

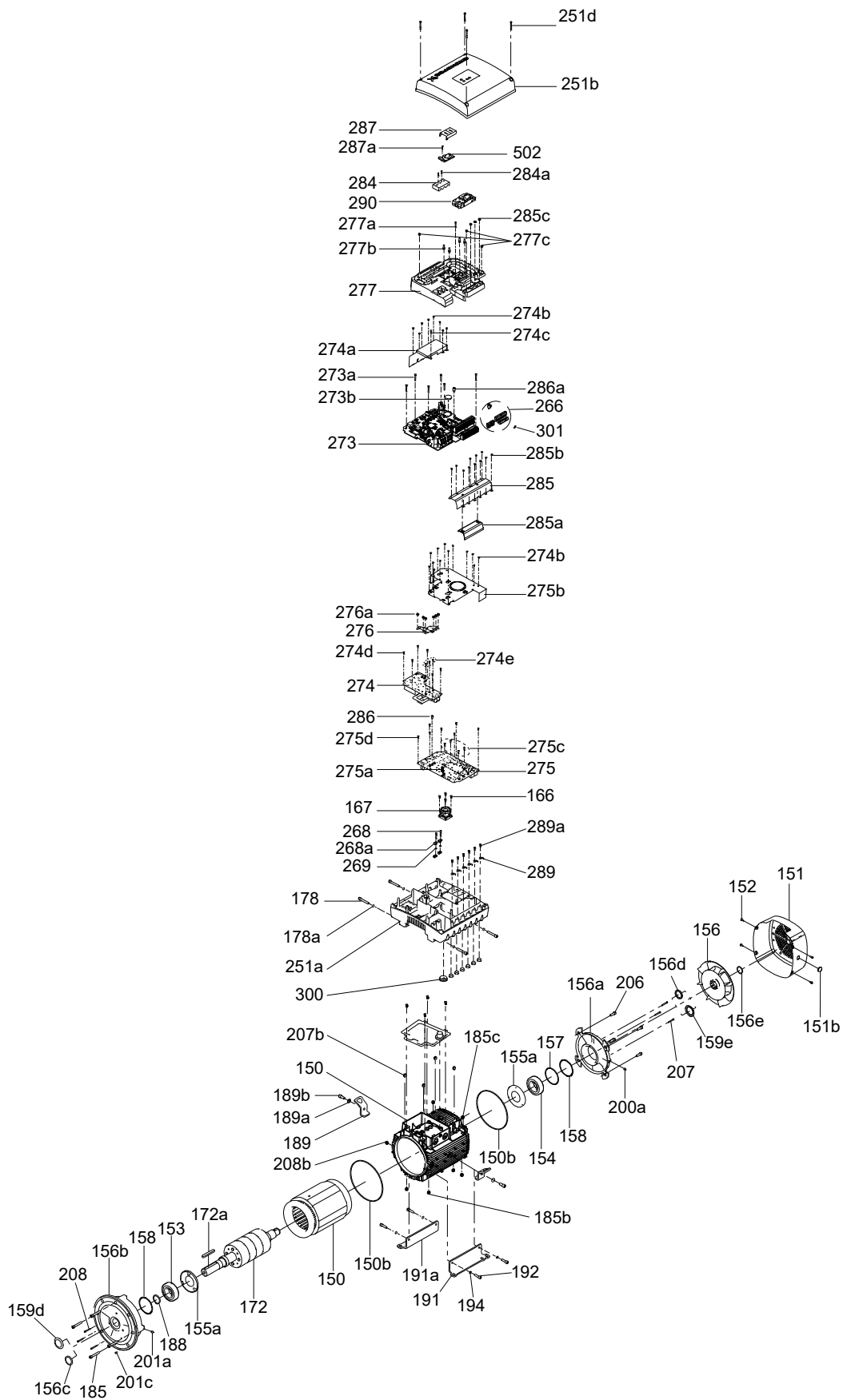
Screws for cables

Description	Kit no.
Kit, Screws for Cables	92907277

Content

Pos.	Description	Quantity
274e	Slot cheese head screw	3
289a	Pan head thread forming screw	6
289	Wire clamp	6
285c	Hex flange nut	3
268	Pan head thread forming screw	2
268a	Earth knot	4
269	Washer spacer	2

MGE and MLE Model K



TM082329

Seal ring (IP55)

Pos.	Description	Quantity	Kit no.
156c/156d	50 x 40 x 5	50	92963044
	55 x 45 x 5		92963045
	50 x 40 x 5	2	92964671
	55 x 45 x 2		92964672

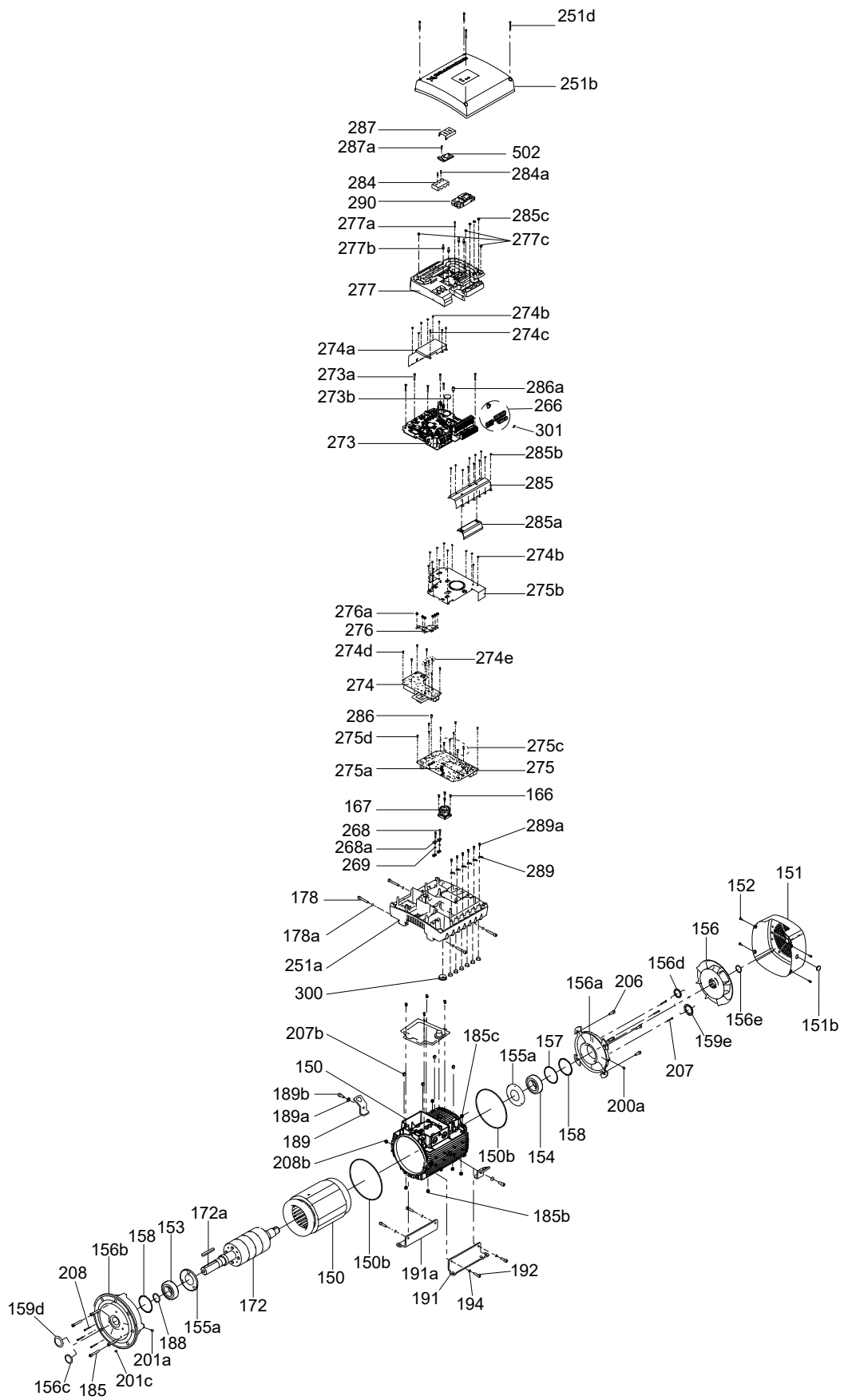
Terminal plugs

Description	Kit no.
Kit, Terminal plugs for MGE160/180	92907276

Content

Pos.	Description	Quantity
266	Connector plug for relay 2	1
	Connector plug for relay 1	1
	Connector plug, 3-pole	2
	Connector plug, 4-pole	1
	Connector plug, 7-pole	1
	Connector plug, 8-pole	1
301	Jumper wire	1

MGE and MLE Model K



TM082329

Replacement motors (without control box)

IEC, 3 x 200-240 V, 50-60 Hz, MGE frame size 160

Power [kW]	Mounting designation	Max. speed	Shaft	Class	Kit no.
7.5	IM V1/B5	4000	Smooth	IP55	93137903
7.5	IM B35	4000	Smooth	IP55	93137904
7.5	IM V1/B5	4000	Smooth	IP55	93137905
11	IM V1/B5	4000	Smooth	IP55	93137906
11	IM V1/B5	4000	Closed keyway and thread	IP55	93137907

IEC, 3 x 380-480 V, 50-60 Hz, MGE frame size 160

Power [kW]	Mounting designation	Max. speed	Shaft	Class	Kit no.
11	IM V1/B5	2200	Closed keyway and thread	IP55	93011060
11	IM V1/B5	2200	Closed keyway and thread	IP55	93080189
11	IM B35	2200	Closed keyway and thread	IP55	93011063
11	IM B3	2200	Closed keyway and thread	IP55	93011067
15	IM B3	2200	Closed keyway and thread	IP55	92907345
15	IM B35	4000	Closed keyway and thread	IP55	93080202
15	IM B35	2200	Closed keyway and thread	IP55	93011064
15	IM V1/B5	4000	Smooth	IP55	93011025
15	IM V1/B5	4000	Closed keyway and thread	IP55	93080182
15	IM V1/B5	4000	Smooth	IP55	93014161
15	IM V1/B5	4000	Closed keyway and thread	IP55	92907344
15	IM V1/B5	4000	Closed keyway and thread	IP55	93080183
15	IM B35	4000	Smooth	IP55	93011042
15	IM B35	4000	Closed keyway and thread	IP55	93011043
15	IM B35	4000	Closed keyway and thread	IP55	93080188
15	IM B3	4000	Closed keyway and thread	IP55	93011050
15	IM V1/B5	2200	Closed keyway and thread	IP55	93011061
15	IM V1/B5	2200	Closed keyway and thread	IP55	93080200
18.5	IM V1/B5	4000	Smooth	IP55	93011026
18.5	IM V1/B5	4000	Closed keyway and thread	IP55	93080184

Power [kW]	Mounting designation	Max. speed	Shaft	Class	Kit no.
18.5	IM V1/B5	4000	Closed keyway and thread	IP55	93011027
18.5	IM V1/B5	4000	Closed keyway and thread	IP55	93080185
18.5	IM B35	4000	Smooth	IP55	93011044
18.5	IM B35	4000	Closed keyway and thread	IP55	93011045
18.5	IM B3	4000	Closed keyway and thread	IP55	93011051
18.5	IM B35	4000	Closed keyway and thread	IP55	93080203

IEC, 3 x 380-480 V, 50-60 Hz, MGE frame size 180

Power [kW]	Mounting designation	Max. speed	Shaft	Class	Kit no.
18.5	IM V1/B5	2200	Closed keyway and thread	IP55	93011062
18.5	IM V1/B5	2200	Closed keyway and thread	IP55	93080201
18.5	IM B35	2200	Closed keyway and thread	IP55	93011065
18.5	IM B3	2200	Closed keyway and thread	IP55	93013927
22	IM V1/B5	4000	Smooth	IP55	93011028
22	IM V1/B5	4000	Closed keyway and thread	IP55	93080186
22	IM V1/B5	4000	Closed keyway and thread	IP55	93011029
22	IM V1/B5	4000	Closed keyway and thread	IP55	93080187
22	IM B35	4000	Smooth	IP55	93011046
22	IM B35	4000	Closed keyway and thread	IP55	93011047
22	IM B3	4000	Closed keyway and thread	IP55	93011052
22	IM V1/B5	2200	Closed keyway and thread	IP55	92967606
22	IM B35	2200	Closed keyway and thread	IP55	93011066
22	IM B3	2200	Closed keyway and thread	IP55	93011068
22	IM B35	4000	Closed keyway and thread	IP55	93080204

IEC, 3 x 400-480 V, 50-60 Hz, MGE frame size 180

Power [kW]	Mounting designation	Max. speed	Shaft	Class	Kit no.
26	IM V1/B5	4000	Smooth	IP55	93011040
26	IM V1/B5	4000	Closed keyway and thread	IP55	93086716
26	IM V1/B5	4000	Closed keyway and thread	IP55	93011041
26	IM B35	4000	Smooth	IP55	93011048
26	IM B35	4000	Closed keyway and thread	IP55	93011049
26	IM B3	4000	Closed keyway and thread	IP55	93011053
26	IM B35	4000	Closed keyway and thread	IP55	93086717

NEMA, 3 x 200-240 V, 50-60 Hz, MLE frame size 160

Power [hp]	Mounting designation	Max. speed	Shaft	Class	Kit no.
10	NEMA type C	4000	Smooth	IP55	93137908
10	NEMA type C / foot	4000	Smooth	IP55	93137909
10	NEMA type C	4000	Open keyway	IP55	93137910
15	NEMA type C	4000	Smooth	IP55	93137911
15	NEMA type C	4000	Open keyway	IP55	93137912
15	NEMA type C / foot	4000	Open keyway	IP55	93137913

NEMA, 3 x 440-480 V, 50-60 Hz, MLE frame size 160

Power [hp]	Mounting designation	Max. speed	Shaft	Class	Kit no.
15	NEMA type C / foot	2200	Open keyway	IP55	93011069
20	NEMA type C	4000	Smooth	IP55	93011054
20	NEMA type C / foot	4000	Open keyway	IP55	93011055
20	NEMA type C / foot	2200	Open keyway	IP55	93011070
25	NEMA type C	4000	Smooth	IP55	93011056
25	NEMA type C / foot	4000	Open keyway	IP55	93011057

NEMA, 3 x 440-480 V, 50-60 Hz, MLE frame size 180

Power [hp]	Mounting designation	Max. speed	Shaft	Class	Kit no.
25	NEMA type C / foot	2200	Open keyway	IP55	93013928
30	NEMA type C	4000	Smooth	IP55	93011058
30	NEMA type C / foot	4000	Open keyway	IP55	93011059
30	NEMA type C / foot	2200	Open keyway	IP55	93013929

Argentina

Bombas GRUNDFOS de Argentina S.A.
Ruta Panamericana km. 37.500industin
1619 - Garin Pcia. de B.A.
Tel.: +54-3327 414 444
Fax: +54-3327 45 3190

Australia

GRUNDFOS Pumps Pty. Ltd.
P.O. Box 2040
Regency Park
South Australia 5942
Tel.: +61-8-8461-4611
Fax: +61-8-8340-0155

Austria

GRUNDFOS Pumpen Vertrieb Ges.m.b.H.
Grundfosstraße 2
A-5082 Gröding/Salzburg
Tel.: +43-6246-883-0
Fax: +43-6246-883-30

Belgium

N.V. GRUNDFOS Bellux S.A.
Boomssteenweg 81-83
B-2630 Aartselaar
Tel.: +32-3-870 7300
Fax: +32-3-870 7301

Bosnia and Herzegovina

GRUNDFOS Sarajevo
Zmaja od Bosne 7-7A
BiH-71000 Sarajevo
Tel.: +387 33 592 480
Fax: +387 33 590 465
www.ba.grundfos.com
E-mail: grundfos@bih.net.ba

Brazil

BOMBAS GRUNDFOS DO BRASIL
Av. Humberto de Alencar Castelo Branco,
630
CEP 09850 - 300
São Bernardo do Campo - SP
Tel.: +55-11 4393 5533
Fax: +55-11 4343 5015

Bulgaria

Grundfos Bulgaria EOOD
Slatina District
Iztocna Tangenta street no. 100
BG - 1592 Sofia
Tel.: +359 2 49 22 200
Fax: +359 2 49 22 201
E-mail: bulgaria@grundfos.bg

Canada

GRUNDFOS Canada inc.
2941 Brighton Road
Oakville, Ontario
L6H 6C9
Tel.: +1-905 829 9533
Fax: +1-905 829 9512

China

GRUNDFOS Pumps (Shanghai) Co. Ltd.
10F The Hub, No. 33 Suhong Road
Minhang District
Shanghai 201106 PRC
Tel.: +86 21 612 252 22
Fax: +86 21 612 253 33

Columbia

GRUNDFOS Colombia S.A.S.
Km 1.5 via Siberia-Cota Conj. Potrero
Chico,
Parque Empresarial Arcos de Cota Bod.
1A.
Cota, Cundinamarca
Tel.: +57(1)-2913444
Fax: +57(1)-8764586

Croatia

GRUNDFOS CROATIA d.o.o.
Buzinski prilaz 38, Buzin
HR-10010 Zagreb
Tel.: +385 1 6595 400
Fax: +385 1 6595 499
www.hr.grundfos.com

Czech Republic

GRUNDFOS Sales Czechia and Slovakia
s.r.o.
Čajkovského 21
779 00 Olomouc
Tel.: +420-585-716 111

Denmark

GRUNDFOS DK A/S
Martin Bachs Vej 3
DK-8850 Bjerringbro
Tel.: +45-87 50 50 50
Fax: +45-87 50 51 51
E-mail: info_GDK@grundfos.com
www.grundfos.com/DK

Estonia

GRUNDFOS Pumps Eesti OÜ
Peterburi tee 92G
11415 Tallinn
Tel.: + 372 606 1690
Fax: + 372 606 1691

Finland

OY GRUNDFOS Pumput AB
Trukkikuja 1
FI-01360 Vantaa
Tel.: +358-(0) 207 889 500

France

Pompes GRUNDFOS Distribution S.A.
Parc d'Activités de Chesnes
57, rue de Malacombes
F-38290 St. Quentin Fallavier (Lyon)
Tel.: +33-4 74 82 15 15
Fax: +33-4 74 94 10 51

Germany

GRUNDFOS GMBH
Schlüterstr. 33
40699 Erkrath
Tel.: +49-(0) 211 929 69-0
Fax: +49-(0) 211 929 69-3799
E-mail: infoservice@grundfos.de
Service in Deutschland:
kundendienst@grundfos.de

Greece

GRUNDFOS Hellas A.E.B.E.
20th km. Athinon-Markopoulou Av.
P.O. Box 71
GR-19002 Peania
Tel.: +0030-210-66 83 400
Fax: +0030-210-66 46 273

Hong Kong

GRUNDFOS Pumps (Hong Kong) Ltd.
Unit 1, Ground floor, Siu Wai Industrial
Centre
29-33 Wing Hong Street & 68 King Lam
Street, Cheung Sha Wan
Kowloon
Tel.: +852-27861706 / 27861741
Fax: +852-27858664

Hungary

GRUNDFOS South East Europe Kft.
Tópark u. 8
H-2045 Törökbálint
Tel.: +36-23 511 110
Fax: +36-23 511 111

India

GRUNDFOS Pumps India Private Limited
118 Old Mahabalipuram Road
Thoraiakkam
Chennai 600 097
Tel.: +91-44 2496 6800

Indonesia

PT GRUNDFOS Pompa
Graha intirub Lt. 2 & 3
Jln. Cililitan Besar No.454. Makasar,
Jakarta Timur
ID-Jakarta 13650
Tel.: +62 21-469-51900
Fax: +62 21-460 6910 / 460 6901

Ireland

GRUNDFOS (Ireland) Ltd.
Unit A, Merrywell Business Park
Ballymount Road Lower
Dublin 12
Tel.: +353-1-4089 800
Fax: +353-1-4089 830

Italy

GRUNDFOS Pompe Italia S.r.l.
Via Gran Sasso 4
I-20060 Truccazzano (Milano)
Tel.: +39-02-95838112
Fax: +39-02-95309290 / 95838461

Japan

GRUNDFOS Pumps K.K.
1-2-3, Shin-Miyakoda, Kita-ku
Hamamatsu
431-2103 Japan
Tel.: +81 53 428 4760
Fax: +81 53 428 5005

Kazakhstan

Grundfos Kazakhstan LLP
7' Kyz-Zhibek Str., Kok-Tobe micr.
KZ-050020 Almaty Kazakhstan
Tel.: +7 (727) 227-98-55/56

Korea

GRUNDFOS Pumps Korea Ltd.
6th Floor, Aju Building 679-5
Yeoksam-dong, Kangnam-ku, 135-916
Seoul, Korea
Tel.: +82-2-5317 600
Fax: +82-2-5633 725

Latvia

SIA GRUNDFOS Pumps Latvia
Deglava biznesa centrs
Augusta Deglava ielā 60
LV-1035, Rīga,
Tel.: + 371 714 9640, 7 149 641
Fax: + 371 914 9646

Lithuania

GRUNDFOS Pumps UAB
Smolensko g. 6
LT-03201 Vilnius
Tel.: + 370 52 395 430
Fax: + 370 52 395 431

Malaysia

GRUNDFOS Pumps Sdn. Bhd.
7 Jalan Peguam U1/25
Glenmarie industrial Park
40150 Shah Alam, Selangor
Tel.: +60-3-5569 2922
Fax: +60-3-5569 2866

Mexico

Bombas GRUNDFOS de México
S.A. de C.V.
Boulevard TLC No. 15
Parque industrial Stiva Aeropuerto
Apodaca, N.L. 66600
Tel.: +52-81-8144 4000
Fax: +52-81-8144 4010

Netherlands

GRUNDFOS Netherlands
Veluwezoom 35
1326 AE Almere
Postbus 22015
1302 CA ALMERE
Tel.: +31-88-478 6336
Fax: +31-88-478 6332
E-mail: info_gnl@grundfos.com

New Zealand

GRUNDFOS Pumps NZ Ltd.
17 Beatrice Tinsley Crescent
North Harbour Industrial Estate
Albany, Auckland
Tel.: +64-9-415 3240
Fax: +64-9-415 3250

Norway

GRUNDFOS Pumper A/S
Stramsveien 344
Postboks 235, Leirdal
N-1011 Oslo
Tel.: +47-22 90 47 00
Fax: +47-22 32 21 50

Poland

GRUNDFOS Pompy Sp. z o.o.
ul. Klonowa 23
Baranowo k. Poznania
PL-62-081 Przeźmierowo
Tel.: (+48-61) 650 13 00
Fax: (+48-61) 650 13 50

Portugal

Bombas GRUNDFOS Portugal, S.A.
Rua Calvet de Magalhães, 241
Apartado 1079
P-2770-153 Paço de Arcos
Tel.: +351-21-440 76 00
Fax: +351-21-440 76 90

Romania

GRUNDFOS Pompe România SRL
S-PARK BUSINESS CENTER, Clădirea
A2, etaj 2
Str. Tipografilor, Nr. 11-15, Sector 1, Cod
013714
Bucuresti, Romania
Tel.: 004 021 2004 100
E-mail: romania@grundfos.ro

Serbia

Grundfos Srbija d.o.o.
Omladinskih brigada 90b
11070 Novi Beograd
Tel.: +381 11 2258 740
Fax: +381 11 2281 769
www.rs.grundfos.com

Singapore

GRUNDFOS (Singapore) Pte. Ltd.
25 Jalan Tukang
Singapore 619264
Tel.: +65-6681 9688
Fax: +65-6681 9689

Slovakia

GRUNDFOS s.r.o.
Prievozská 4D 821 09 BRATISLAVA
Tel.: +421 2 5020 1426
sk.grundfos.com

Slovenia

GRUNDFOS LJUBLJANA, d.o.o.
Leskoškova 9e, 1122 Ljubljana
Tel.: +386 (0) 1 568 06 10
Fax: +386 (0) 1 568 06 19
E-mail: tehnika-si@grundfos.com

South Africa

GRUNDFOS (PTY) LTD
16 Lascelles Drive, Meadowbrook Estate
1609 Germiston, Johannesburg
Tel.: (+27) 10 248 6000
Fax: (+27) 10 248 6002
E-mail: lgradidge@grundfos.com

Spain

Bombas GRUNDFOS España S.A.
Camino de la Fuenteclilla, s/n
E-28110 Algete (Madrid)
Tel.: +34-91-848 8800
Fax: +34-91-628 0465

Sweden

GRUNDFOS AB
Box 333 (Lunnagårdsgatan 6)
431 24 Mölndal
Tel.: +46 31 332 23 000
Fax: +46 31 331 94 60

Switzerland

GRUNDFOS Pumpen AG
Bruggacherstrasse 10
CH-8117 Fällanden/ZH
Tel.: +41-44-806 8111
Fax: +41-44-806 8115

Taiwan

GRUNDFOS Pumps (Taiwan) Ltd.
7 Floor, 219 Min-Chuan Road
Taichung, Taiwan, R.O.C.
Tel.: +886-4-2305 0868
Fax: +886-4-2305 0878

Thailand

GRUNDFOS (Thailand) Ltd.
92 Chaloeam Phrakiat Rama 9 Road
Dokmai, Pravej, Bangkok 10250
Tel.: +66-2-725 8999
Fax: +66-2-725 8998

Turkey

GRUNDFOS POMPA San. ve Tic. Ltd. Sti.
Gebze Organize Sanayi Bölgesi
Ihsan dede Caddesi
2. yol 200. Sokak No. 204
41490 Gebze/ Kocaeli
Tel.: +90 - 262-679 7979
Fax: +90 - 262-679 7905
E-mail: sats@grundfos.com

Ukraine

ТОВ "ГРУНДФОС УКРАЇНА"
Бізнес Центр Європа
Столицне шосе, 103
м. Київ, 03131, Україна
Tel.: (+38 044) 237 04 00
Fax: (+38 044) 237 04 01
E-mail: ukraine@grundfos.com

United Arab Emirates

GRUNDFOS Gulf Distribution
P.O. Box 16768
Jebel Ali Free Zone, Dubai
Tel.: +971 4 8815 166
Fax: +971 4 8815 136

United Kingdom

GRUNDFOS Pumps Ltd.
Grovebury Road
Leighton Buzzard/Beds. LU7 4TL
Tel.: +44-1525-850000
Fax: +44-1525-850011

U.S.A.

Global Headquarters for WU
856 Koomey Road
Brookshire, Texas 77423 USA
Phone: +1-630-236-5500

Uzbekistan

Grundfos Tashkent, Uzbekistan
The Representative Office of Grundfos
Kazakhstan in Uzbekistan
38a, Oybek street, Tashkent
Tel.: (+998) 71 150 3290 / 71 150 3291
Fax: (+998) 71 150 3292

93227252 07.2024

ECM: 1400098

GRUNDFOS Holding A/S
Poul Due Jensens Vej 7
DK-8850 Bjerringbro
Tel: +45 87 50 14 00
www.grundfos.com

GRUNDFOS 