

74. SE/SL Frame 56

SE/SL Fr56, 50 Hz

Components and material specifications

Pos.	Component	Material	Standard
1	Hexagon socket head cap screw	M8 × 16. A4-70	
7 A	Screw nail	2.4 × 6. A2/304	FCUA02505
9 A	Impeller key		
10	Lifting handle	1.4408	
12	Suction flange	Cast iron. EN 1561 EN-GJL-250	
12 A	Suction cover	Cast iron. EN 1561 EN-GJL-250	
12 C	Set screw	M24 x 25. A4-80	DIN 913
20	Pipe plug		
27	Lock washer	D11 x D6.4 x 0.7	
28	Cable gland		
32	Flat washer	A4-70	DIN 125A
35 A	Hex head screw	A4-80	DIN 933
37 B	O-ring	NBR	YJOR359357
39	O-ring	NBR	YJOR299357
39 B	O-ring	NBR 70	
48	Stator		IE3/IE4
49	Impeller	Cast iron. EN 1561 EN-GJL-250	
50	Pump housing	Cast iron. EN 1561 EN-GJL-250	
50 A	Cover plate for inspection hole	1.4517/1.4408	EN 10283
50 B	O-ring	NBR 70	
50 D	Hexagon socket head cap screw	A4-70	DIN933
55	Stator housing	Cast iron. EN 1561 EN-GJL-250	
58	Upper seal housing	Cast iron. EN 1561 EN-GJL-250	
59A	O-ring	NBR 70	
59	Bearing cover	Cast iron. EN 1561 EN-GJL-250	
61	Upper bearing bracket	Cast iron. EN 1561 EN-GJL-250	
62	O-ring	NBR 70	
66 A	Washer	A4	DIN 125A
67 A	Plastic plug for impeller		
67 B	Serrated lock washer	A4	
67	Hexagon socket head cap screw	M16 26/17 x 1.2 A4	
76	Nameplate		
77	Lower seal housing	Cast iron. EN 1561 EN-GJL-250	
89	Hexagon socket head cap screw	M8 × 12. A2-70	
93	Hexagon socket head cap screw	M6 × 30. A4-70	
105	Shaft seal cartridge	SiC-SiC	
105 A	Hexagon socket head cap screw	A4-80	
105 B	Disc for shaft seal protection	M6×16. PTFE	
152	Ball bearing		6016 2RS1/C3 WT
152 A	Wave spring	124 × 114 × 1.6	H4.8
153	Angular contact ball bearing		7316 BECBP
153 B	Outer dummy bearing	Steel. EN 1.0580	
153 C	Inner dummy bearing	Steel. EN 1.0580	
154	Ball Bearing		6214 2RS1/HC5C3 WT
155	Lower bearing bracket	Cast iron. EN 1561 EN-GJL-250	
157 D	O-ring	NBR 70	
158	Centrifugal cup	ZYTEL 101L PA6.6	
158 A	O-ring	NBR 70	

Pos.	Component	Material	Standard
159	Wire cover	PTFE	
164 A	Motor top cover	Cast iron. EN 1561 EN-GJL-250	
168	Cable entry cover	Cast iron. EN 1561 EN-GJL-250	
168 B	Lower cable entry	M60. D66	
172	Shaft with rotor		
176 C	Terminal board		
181	Power cable		
181 S	Sensor cable		
183	Hexagon socket head cap screw	M10 × 25. A4-80	DIN 912
187	Lock nut	M80	MB16
187 A	Lock washer	M80	KM16
190	Lifting handle	1.4408	EN 10283
193	Plug	N 3/8" ED. 1.4571 / 1.4436	
198	Seal ring	CR601	
198 B	Washer	56 × 31/32 A4	
198 C	Disc spring	56 × 28.5/32 × 2.5	DIN2093
226	Terminal board		
230 B	Lock washer	A4-70	DIN 6798A
252	Control cable		
400	O-ring	NBR	AS250
401	Radial seal ring	D75/D100 × 10	
402	Grease nipple		DIN 71412A A3F
403	Float switch with cable		
405	Brass washer	M8	DIN 125
406	Brass nut	M8	DIN 934
409	Power cable clamp	Stainless steel. 1.4408	EN 10283
412	Plug	3/4"	ISO 228-G
520	Moisture switch		
520 A	Slot cheese head screw		DIN 84A
522	Bracket screen termination	S235JRG2C	
1084	Socket head cap screw	M3 × 12. A2 1.4301	DIN 912
1129	Washer	D10.5/20 × 2. A4	
1173	Seal washer	D17/23 Cu	

Cables and cable entry parts

Spare power cables with arrangement

Pos.	Description	4G10 mm ²	4G16 mm ²	4G10 mm ² EMC	4G16 mm ² EMC	4G25 mm ² EMC	4G35 mm ² EMC
	Kit No.	92909620	92909621	92909622	92909623	92909624	92909625
181	Power cable	1	1	1	1	1	1
168 B	Cable entry	1	1	1	1	1	1
198	Seal ring CR601	1	1	1	1	1	1
198B	Washer A4	2	2	2	2	2	2
198C	Disc spring DIN2093	1	1	1	1	1	1
168A	Lower cable entry M60. D66	1	1	1	1	1	1

Spare sensor cable with arrangement

Pos.	Description	10G1.5 mm ²	18G1.5 mm ²
	Kit No.	92909626	92976008
181S	Sensor cable	1	1
168	Cable entry	1	1
198	Seal ring CR601	1	1
198B	Washer A4	2	2
198C	Disc spring DIN2093	2	1
168A	Lower cable entry M60. D66	1	1

Cable arrangement kits

Pos.	Description	For 4G10 mm ² cable	For 4G16 mm ² cable	For 4G25 mm ² cable	For 4G35 mm ² cable	For 10G1.5 mm ² Sensor Cable	18G1.5 mm ²
	Kit No.	92909627	92909628	92909629	92909630	92909631	92976024
181	Cable entry cover	1	1	1	1	1	1
168B	Cable entry	1	1	1	1	1	1
198	Seal ring CR601	1	1	1	1	1	1
198B	Washer A4	2	2	2	2	2	2
198C	Disc spring DIN2093	1	1	1	1	2	1
168A	Lower cable entry M60, D66	1	1	1	1	1	1
157D	O-ring 65x5	1	1	1	1	1	1
183	Hexagon socket head cap screw M10 × 25, A4-80 DIN 912	2	2	2	2	2	2

Shaft seals



TM081579

Seal ring material		
Pos.	Description	SiC-SiC (standard)
	Kit No.	92909573
105	Shaft seal	1

O-rings

O-ring kits for hydraulics

		NBR			
Pump outlet size		DN200		DN300	DN350
Pos.	Pump size	M-Hydraulic 37-41kW		L-Hydraulic 28kW, 43kW	L-Hydraulic 28kW, 43kW
		H-Hydraulic 28-32kW	H-Hydraulic 41kW		
Kit No.	Description	92909579	92976051	92909612	92976054
39B	O-ring 419.3x5.7	1	1	1	1
39A	O-ring 439.3x5.7	-	-	1	1
39A	O-ring 379.3x5.7	-	1	-	-
39A	O-ring 359.3x5.7	1	-	-	-
39	O-ring 359.3x5.7	-	-	-	1
39	O-ring 299.3x5.7	-	-	1	-
39	O-ring 209.3x5.7	1	1	-	-
50B	O-ring 42.2x5	1	1	1	1

NOTE: Sizes depend on the Hydraulic size

O-rings for motor

Pos.	Description	SL	SE
		NBR	NBR
	Kit No.	92909591	92988751
39	O-ring 299.3x5.7	2	2
39B	O-ring 419.3x5.7	1	3
59A	O-ring 167x3	1	1
62	O-ring 339.3x5.7	2	2
157D	O-ring 65x5	3	3
158A	O-ring 72.39x5.33	1	1
400	O-ring 126x3.53 NBR 70	1	1

Seal ring bearings**Bearings**

Pos.	Description	Standard		Ready for VFD	
		up to 41kW (P2)	greater than 41kW(P2)	up to 41kW (P2)	greater than 41kW (P2)
	Kit No.	92909593	92909595	92909594	92909596
152A	Wave spring 124x114x0.6	1	1	1	1
152B	Space washer	-	1	-	1
152	Ball bearing 6016	1	1	1	1
153B	Dummy bearing, outer	1	-	1	-
153C	Dummy bearing, inner	1	-	1	-
153	Angular contact ball bearing 7316	1	2	1	2
154	Ball bearing 6214 (standard)	1	1	-	-
154	Insulated ball bearing 6214	-	-	1	1

Spare, NDE insulated bearing

Pos.	Description	All motor sizes
	Kit No.	92909597
154	Insulated ball bearing 6214	1

Spare, Radial seal ring

Pos.	Description	All motor sizes
	Kit No.	92909598
401	Radial seal ring d75/d100x10	1

Kit, Bearing locking kit

Pos.	Description	All motor sizes
	Kit No.	92909599
187	Lock nut, M80	1
187a	Lock washer, M80	1

**Impeller, suction cover, pump housing
Impeller**

Pos.	Description
12a	See Grundfos Product Center

			4-pole motor											6-pole motor			
Pump hydraulic (pressure range)	P2 motor power [kW] 50Hz		-	-	-	-	-	21	24	28	32	36	41	18	21	24	28
	P2 motor power [kW] 60Hz		18	21	24	28	32	37	42	49	56	63	-	-	37	43	-
PN	Description																
92976073	H	CI impeller	X														
92976074	H	CI impeller		X													
92976075	H	CI impeller			X												
92976076	H	CI impeller				X											
92976077	H	CI impeller					X										
92976078	H	CI impeller						X									
92976079	H	CI impeller							X								
92976090	H	CI impeller								X							
92976091	H	CI impeller									X						
92976092	H	CI impeller										X					
92976093	H	CI impeller											X				
92909561	M	CI impeller					X										
92909562	M	CI impeller						X									
92909563	M	CI impeller							X								
92909564	M	CI impeller								X							
92909565	M	CI impeller									X						
92909566	M	CI impeller										X					
92909567	L	CI impeller											X				
92909568	L	CI impeller												X			
92909569	L	CI impeller													X		
92909570	L	CI impeller														X	

Suction cover

Pos.	Description
12	See Grundfos Product Center

Suction cover selection guide

		4-pole motor											6-pole motor						
PN	Description	P2 motor power 50Hz											P2 motor power 60Hz						
		-	-	-	-	-	21	24	28	32	37	42	49	56	63	-	-	37	43
92976069	Spare, Suction cover H CI 32 60 200 CED	X	X	X	X	X													
92976068	Spare, Suction cover H CI 28/49 50/60 200 CED						X	X	X										
92976067	Spare, Suction cover H CI 41/63 50/60 200 CED										X	X	X						
92909553	Spare, Suction cover M CI 41/63 50/60 200 CED						X	X	X	X	X	X							
92909554	Spare, Suction cover L CI 28/43 50/60 300 CED														X	X	X	X	
92976070	Spare, Suction cover L CI 28/43 50/60 350 CED														X	X	X	X	

Pump housing

Pos.	Description
50	See Grundfos Product Center

Pump housing selection guide

		4-pole motor						6-pole motor				
		21	24	28	32	36	41	18	21	24	28	
	P2 motor power 50Hz											
	P2 motor power 60Hz	37	42	49	56	63	-	-	37	43	-	
PN	Description											
92976064	Spare, volute H28 DN100	X	X	X								
92976065	Spare, volute H28 DN150	X	X	X								
92976065	Spare, volute M41 DN150				X	X	X					
92909557	Spare, volute M41 DN200	X	X	X	X	X	X					
92909558	Spare, volute M41 DN200 PN16	X	X	X	X	X	X					
92909559	Spare, volute L43 DN300							X	X	X	X	

Plugs, fasteners

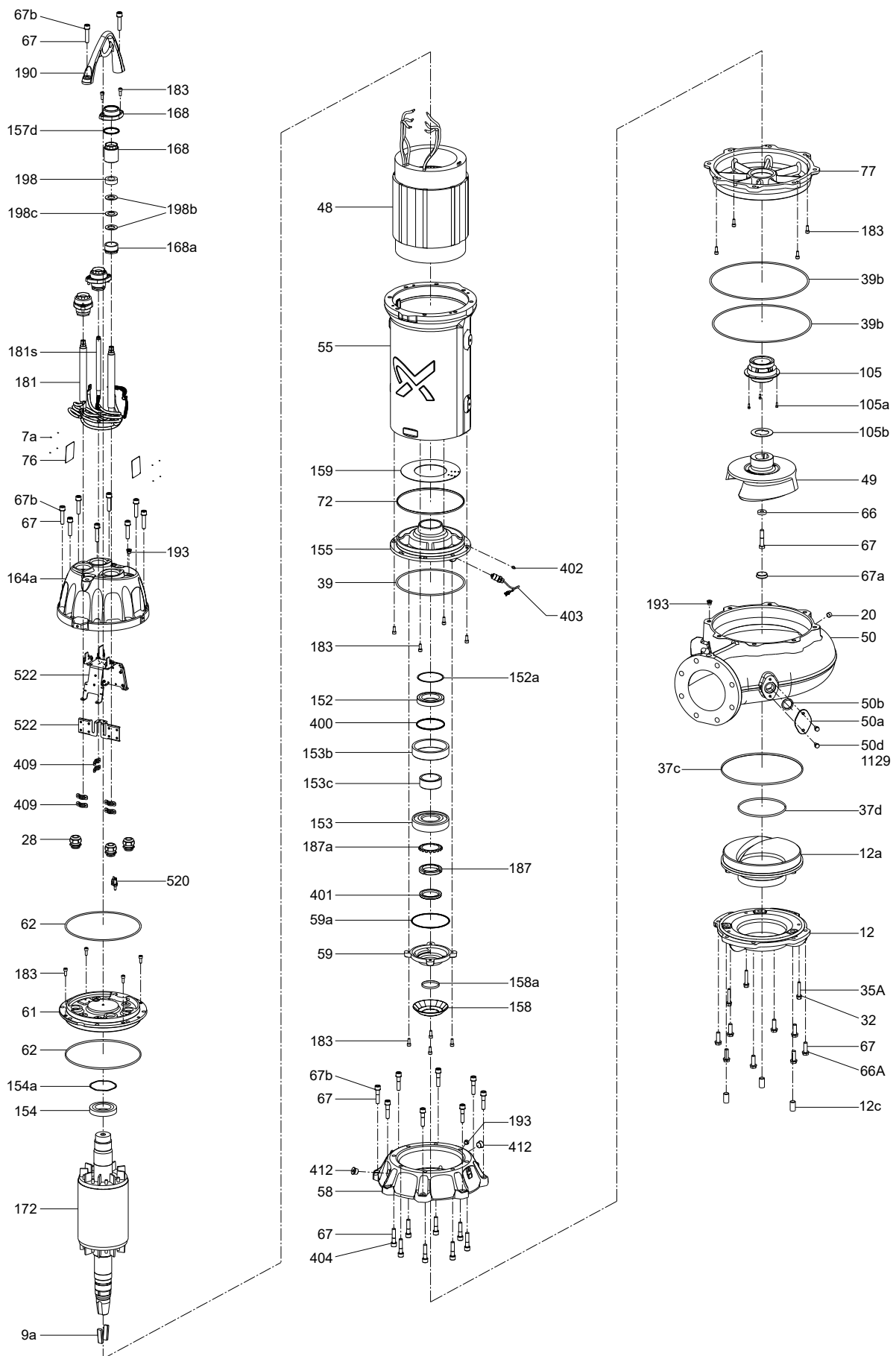
Plug kits

Pos.	Description	SE/SL		
		Motor SL	Motor SE	Pump
	Kit No.	92909618	92976059	92909578
193	Plug N 3/8" ED. 1.4571 / 1.4436	2	2	1
412	Plug 3/4" ISO 228-G	2	2	-
20	Pipe plug 1/2"		-	1
410	Hexagon socket M10 x 10 Set screw (DIN913. PTFE)	10	12	-
411	Hexagon Socket M16 x 10 Set screw (DIN913. PTFE)	-	1	-

Shaft seal and impeller fastening and covers kit

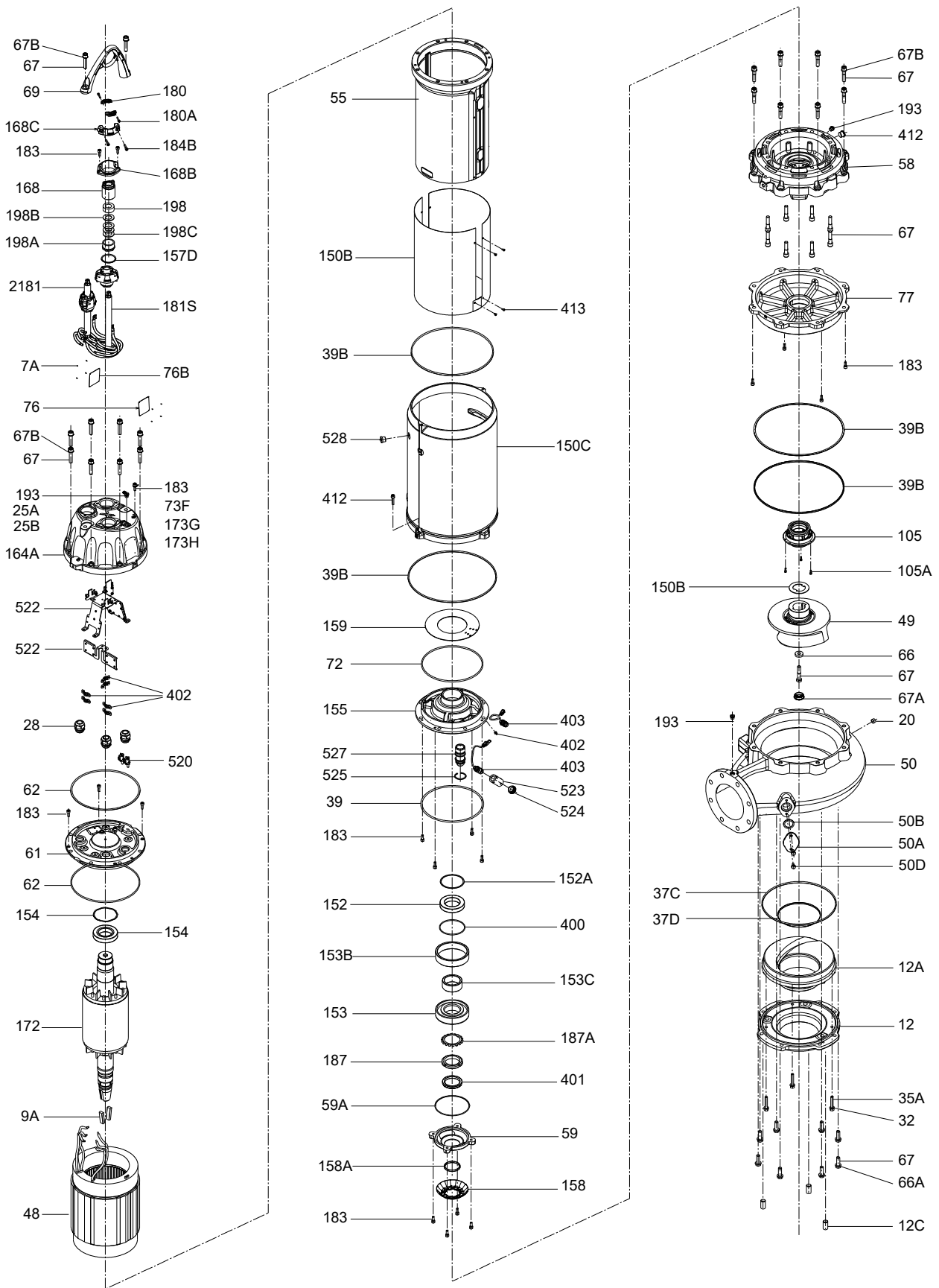
Pos.	Description	H-hydraulic	M-hydraulic	L-Hydraulic
		92976060	92909577	92976063
105A	Hexagon socket head cap screw A4 DIN933	3	3	3
105B	Disc for shaft seal protection	1	1	1
66	Impeller washer M16 A4 DIN 125A	1	1	1
67	Impeller screw M16 x 80 26/17 x 1.2 A4 DIN933	1	-	-
67	Impeller screw M16 x 120 26/17 x 1.2 A4 DIN933	-	1	-
67	Impeller screw M16 x 160 26/17 x 1.2 A4 DIN933	-	-	1
67A	Plastic plug for impeller	1	1	1
9A	Impeller key	2	2	2
183	Hexagon socket head cap screw M10 x 25, A4-80 DIN 912	4	4	4

SL Frame 56, 50 Hz, Exploded view



TM083025

SE Frame 56, 50 Hz, Exploded view



TM085227