

UNILIFT APG



Service instructions



Unilift APG Service video
(all available languages)
<https://youtu.be/MZXm6PFQmpE>

UNILIFT APG

English (GB)

Service instructions	4
----------------------------	---

Original service instructions

Table of contents

1.	General information	4
2.	Hazard statements	4
3.	Notes	4
4.	Returning the product for service	5
5.	Safety	5
6.	Identification	5
6.1	Nameplate, UNILIFT APG	5
6.2	Type key, UNILIFT APG	6
6.3	Storing and handling the product	6
6.4	Torques and lubricants	7
7.	Servicing the product	8
7.1	General information	8
7.2	Replacing the grinder system	10
7.3	Adjusting the impeller clearance	10
7.4	Replacing the cable and float switch	11
7.5	Changing the oil	11
8.	Fault finding	12
8.1	The motor does not start	12
8.2	The motor protection or thermal relay trips after a short time of operation	12
8.3	The pump runs constantly or gives too little water	12
8.4	The pump runs but gives no water	12
9.	Drawings	13

1. General information



Read this document before you start service work on the product. Service work must comply with local regulations and accepted codes of good practice.

Observe the safety instructions in the installation and operating instructions for the product.

2. Hazard statements

The symbols and hazard statements below may appear in Grundfos installation and operating instructions, safety instructions and service instructions.

**DANGER**

Indicates a hazardous situation which, if not avoided, will result in death or serious personal injury.

**WARNING**

Indicates a hazardous situation which, if not avoided, could result in death or serious personal injury.

**CAUTION**

Indicates a hazardous situation which, if not avoided, could result in minor or moderate personal injury.

The hazard statements are structured in the following way:

SIGNAL WORD**Description of the hazard**

Consequence of ignoring the warning

- Action to avoid the hazard.



3. Notes

The symbols and notes below may appear in Grundfos installation and operating instructions, safety instructions and service instructions.



Observe these instructions for explosion-proof products.



A blue or grey circle with a white graphical symbol indicates that an action must be taken.



A red or grey circle with a diagonal bar, possibly with a black graphical symbol, indicates that an action must not be taken or must be stopped.



If these instructions are not observed, it may result in malfunction or damage to the equipment.



Tips and advice that make the work easier.

4. Returning the product for service

If you request Grundfos to service the product, contact Grundfos with details about the pumped liquid before returning the product. Otherwise Grundfos can refuse to accept the pump for service.

Costs of returning the product are to be paid by the customer.

However, any application for service, no matter to whom it may be made, must include details about the pumped liquid if the product has been used for liquids which are injurious to health or toxic.

5. Safety

WARNING

Installation fault

Death or serious personal injury



- Pump installation in pits must be carried out by specially trained persons.
- Work in or near wastewater pits must be carried out according to local regulations.

CAUTION

Electric shock

Minor or moderate personal injury



- It must be possible to lock the mains switch in position 0.
- Type and requirements as specified in EN 60204-1, 5.3.2.



We recommend that you make all maintenance and service work when the pump is placed outside the pit.

For safety reasons, all work in pits must be supervised by a person outside the pump pit.

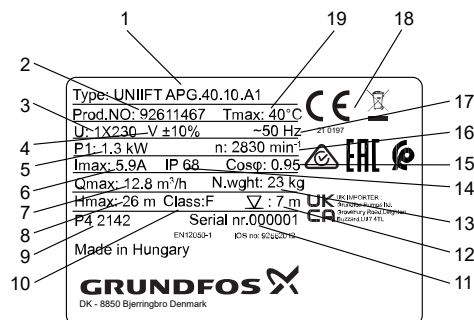
Pits for submersible wastewater pumps contain wastewater with toxic and/or disease-causing substances. Therefore, all persons involved must wear appropriate personal protective equipment and clothing and all work on and near the pump must be carried out under strict observance of the hygiene regulations in force.



Before attempting to lift the pump, make sure that the lifting bracket is tightened. Tighten if necessary.

6. Identification

6.1 Nameplate, UNILIFT APG



Nameplate, UNILIFT APG

Pos.	Description
1	Product type
2	Product number
3	Supply voltage
4	Voltage tolerance
5	Power consumption
6	Max. current
7	Max. flow rate
8	Max. head
9	Factory code and production code (year and week)
10	Insulation class
11	Serial number
12	Max. installation depth [m]
13	Net weight [kg]
14	Enclosure class
15	Cosinus phi
16	Speed of rotation
17	Frequency
18	Marks of approval
19	Max. liquid temperature

TM081769

6.2 Type key, UNILIFT APG

Example: UNILIFT APG.40.10.A1. 1x220-240V SCH

Code	Explanation	Designation
UNILIFT APG	Product name	
40		Nominal diameter of the outlet
10		Power output, P2 / 100 [W]
[]	Manual operation without float switch	Level control
A	Automatic operation with float switch	
1	Single-phase	Motor type
3	Three-phase	
1 x 230 V		Nominal voltage
1 x 220 - 240 V		
3 x 220 V		
3 x 380 V		
3 x 400 V		
[]	No plug	Plug type
SCH	Europe - F type wall plug	
ARG	Argentina - IRAM approved I type wall plug	
AUS	Australia, New Zealand - I type wall plug	

6.3 Storing and handling the product

The pump can be transported in a vertical or horizontal position. Make sure that it cannot roll or fall over.

6.3.1 Storing the product

During long periods of storage, protect the pump against moisture and heat.

If the pump has been in use, change the motor liquid before storage.

After a long period of storage, inspect the pump before putting it into operation. Make sure that the impeller can rotate freely. Pay special attention to the shaft seals, O-rings, motor oil and the cable entry.

6.3.2 Transporting the product

Rate all lifting equipment for the purpose. Check the lifting equipment for damage before making any attempts to lift the pump. Do not exceed the lifting equipment rating under any circumstances. For pump weights, see the pump nameplate Nameplate.



WARNING Instable pump

Death or serious personal injury

- Always lift the pump by its lifting bracket or by means of a forklift if the pump is fixed on a pallet. Never lift the pump by means of the motor cable or the hose/pipe.

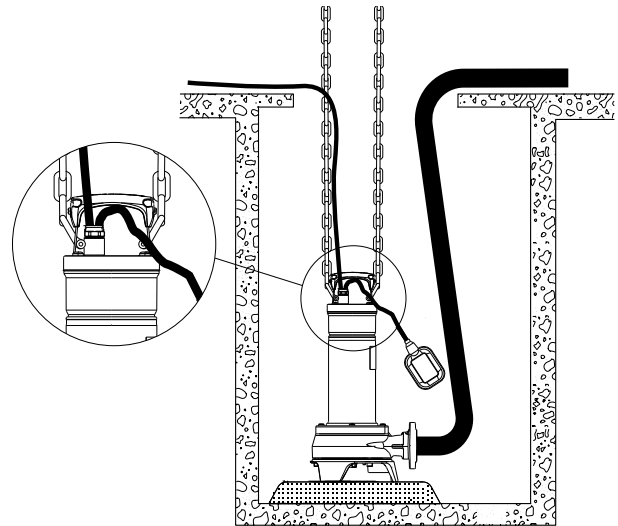
The polyurethane-embedded plug prevents water from entering the motor via the motor cable.

6.3.3 Lifting the product



Do not pull or lift the product by the power cable or by the outlet pipe or hose.

- Lift the pump using the pump handle.
- If the pump is installed in a well or tank, lower and lift it by means of a wire or chain fastened to the pump handle. The handle is provided with two lateral holes which may be used to lift the pump.



Lifting the product

TM081445

6.3.4 Contaminated products

CAUTION
Biological hazard



Minor or moderate personal injury

- If a pump has been used for a liquid which is injurious to health or toxic, the pump will be classified as contaminated.

See section Returning the product for service.

6.4 Torques and lubricants

Pos.	Designation	Quantity	Dimension	Torque [Nm]	Lubricant
All	O-rings	All			Rocol Sapphire Aqua-Sil
12c	Setscrew	3	M6 × 16	-	
26	Screw	3	M8 × 25	7 ± 1	
34	Screw	2	PH 4.2 × 13	2 ± 0.5	
44a	Screw	1	M8 × 25	7 ± 1	Castrol Optimol Paste
184b	Screw	4	TORX M6 × 20	12 ± 2	
188a	Screw	1	M8 × 25	10 ± 2	
193	Screw	4	TORX M6 × 75	5 ± 1	

Rocol Sapphire Aqua-Sil, product number RM2924 (1 kg).

Castrol Optimol Paste White T, product number V6001176 (0.4 l).

Related information

[7.2 Replacing the grinder system](#)

[7.3 Adjusting the impeller clearance](#)

[7.4 Replacing the cable and float switch](#)

7. Servicing the product

7.1 General information

DANGER

Electric shock

Death or serious personal injury



- Switch off the power supply before you start any work on the product.
- Make sure that the power supply cannot be switched on accidentally.

CAUTION

Biological hazard

Minor or moderate personal injury



- Use gloves and other suitable personal protection equipment in accordance with local regulations.

CAUTION

Sharp element

Minor or moderate personal injury



- Wear protective gloves when working with the grinder system.

CAUTION

Biological hazard

Minor or moderate personal injury



- Flush the product thoroughly with clean water before starting the service.
- Wear personal protective equipment.



Position numbers of parts (numbers in brackets) refer to the drawings in the section Drawings.

All service work must be carried out by specially trained staff.

Before carrying out service, make sure that the pump has been thoroughly flushed with clean water. Rinse the pump parts in water after dismantling.

Related information

[9. Drawings](#)

7.1.1 Maintaining the product

- Check the pump and replace the oil once a year. If the pump is used for pumping liquids containing abrasive particles or it is operating continuously, the pump must be checked at shorter intervals.
- If the drained oil contains water or other impurities, we recommend that you replace the shaft seal. Contact Grundfos Service.

7.1.2 Maintenance schedule

Inspect pumps running normal operation every 3000 operating hours or at least once a year. If the dry-solids content of the pumped liquid is very high or sandy, check the pump at shorter intervals.

Check the following:

- **Power consumption**
See the nameplate.
- **Oil level and oil condition**
When the pump is new or after replacement of the shaft seal, check the oil level after one week of operation. Use MARCOL 152 ESSO oil or equivalent type. Oil auto-ignition temperature must be above 180 °C.
- **Cable entry**



Make sure that the cable entry is watertight and that the cables are not sharply bent and/or pinched.

- **Pump parts**
Check the wearing parts, for example, impeller and pump housing. Replace defective parts.
- **Grinder system and parts**
In case of frequent choke-ups, check the grinder system for visible wearing. If necessary, replace the grinder system.

7.1.3 Oil

In the case of long operating time or continuous operation, the oil must be replaced as follows:

Liquid temperature	The oil must be replaced after
20 °C	4500 operating hours
40 °C	3000 operating hours

The pump contains 140 ml of non-poisonous oil. Use MARCOL 152 ESSO oil or equivalent type.

Used oil must be disposed of in accordance with local regulations.

7.1.4 Service kits

The following service kits are available for all pumps.

Service kit	Contents	Pos.	O-ring material	Product number
Impeller		49, 9a, 66, 188a		92693611
Grinder parts		45, 44, 44a, 66, 188a		92693612
Set of screws	5 × M8, 3 × M6	26, 12c		92693631
O-ring kit	NBR	194, 157, 37		92693638
Motor kit	Complete motor, single-phase, 220-240 V, 50 Hz			92693542
	Complete motor, single-phase, 220-240 V, 50 Hz, without hole for float switch			92701743
	Complete motor, single-phase, 230 V, 50 Hz			92693544
	Complete motor, single-phase, 230 V, 50 Hz, without hole for float switch			92701745
	Complete motor, three-phase, 220 V 50 Hz	150, 190, 34, 86,	NBR	92701748
	Complete motor, three-phase, 220 V 50 Hz, without hole for float switch	193, 194, 157, 37, 184b		92701747
	Complete motor, three-phase, 380V 50 Hz			92701760
	Complete motor, three-phase, 380 V 50 Hz, without hole for float switch			92701746
	Complete motor, three-phase, 400 V 50 Hz			92701761
	Complete motor, three-phase, 400 V 50 Hz, without hole for float switch			92693545
Capacitor (230 V)	161, 194, 157	92695572		
Cable, single-phase without a plug		92693615		
Cable, single-phase with AU plug		92697765		
Cable, single-phase with ARG plug	181, 34, 86, 194, 157	NBR		92697766
Cable, single-phase with SCHUKO plug		92697767		
Cable, three-phase		92693617		
Float switch		92695571		

7.2 Replacing the grinder system



CAUTION Sharp element

Minor or moderate personal injury

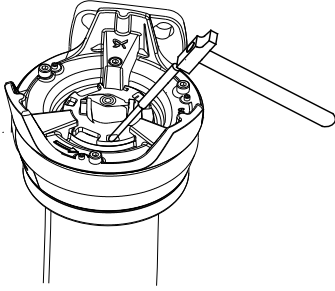
- Wear protective gloves when touching the sharp edges of the impeller, grinder head and grinder ring.

For position numbers in brackets, see the exploded drawing in the appendix.

Proceed as follows:

Dismantling

1. Loosen the screw (44a) that holds the grinder ring in place.
2. Loosen the grinder ring (44) and open the bayonet socket by knocking or turning the grinder ring 15 to 20° clockwise. See the figure below.



TM081555

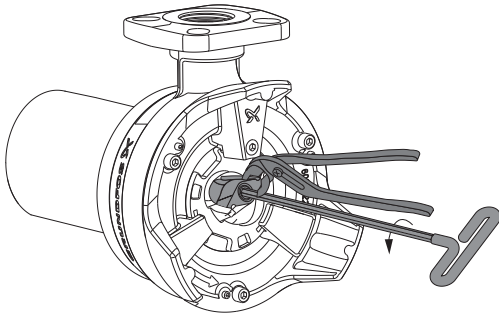
Removing the grinder ring

3. Gently prise the grinder ring (44) out of the pump housing with a screwdriver.



Make sure that the grinder ring does not get stuck against the grinder head.

4. Use a plier to hold the grinder head.
5. Loosen and remove the screw (188a) and the locking ring (66) in the shaft end.



TM081602

Loosen the grinder head

6. Remove the grinder head (45).

Assembly

1. When fitting the grinder head (45), the projections on the back of the grinder head must engage with the holes in the impeller (49).
2. Tighten the screw (188a) for the grinder head with a torque of 10 Nm. Do not forget the lock washer.
3. Fit the grinder ring (44).
4. Turn the grinder ring (44) 15 to 20° counterclockwise until it is tightened.
5. Tighten the screw (44a) with a torque of 7 Nm.
6. Check that the grinder rotates freely.

Related information

[6.4 Torques and lubricants](#)

[9. Drawings](#)

7.3 Adjusting the impeller clearance

For position numbers in brackets, see exploded drawing in the appendix.

Proceed as follows:

1. Loosen the set screws fully (12c).
2. Gently tighten the screws (26).
3. Gently tighten the set screws (12c).
4. Loosen the screws (26) with at least three turns.
5. Tighten the set screw (12c) by 180°.
6. Tighten the screws (26) with a torque of 7 Nm.

Related information

[6.4 Torques and lubricants](#)

[9. Drawings](#)

7.4 Replacing the cable and float switch

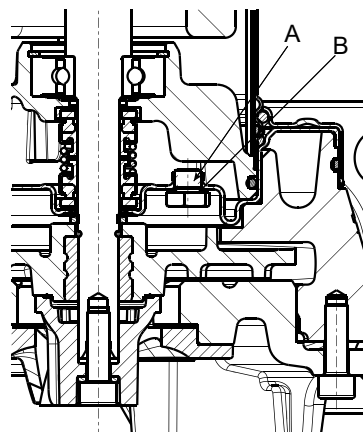
1. Loosen and remove the cable gland.
2. Loosen and remove the top cover screws (193).
3. Loosen the top cover with handle (190) and open it carefully.
4. Remove the plate (31).
5. Dismantle the cable plug, which is in focus (67a or 67b), and remove the cable from the top cover.
6. Take the new cable and insert it through the top cover.
7. Before assembly, check the O-ring (157) and replace if damaged.
8. Assembly the cable plug (67a or 67b).
9. Push back the plate (31).
10. Mount the top cover with handle (190).
11. Check the O-rings (194) on the screws (193) for damage, and replace them if needed.
12. Mount the screws (193) and tighten according to the section Torques and lubrication.
13. Grease the threads on the cable glands thread with Castrol Optimol Paste.
14. Mount and tighten the cable glands accordingly.

Related information

- [6.4 Torques and lubricants](#)
- [9. Drawings](#)

7.5 Changing the oil

1. Loosen and remove 4 screws (26) and lift away the pump base (84).
2. Use a plier to hold the grinder head and loosen and remove the screw (188a) and the locking ring (66) in the shaft end.
3. Remove the grinder head (45).
4. Pull the impeller (49) away from the shaft. Remember to remove and collect the key (9a).
5. Loosen and remove the screw (184b) and lift away the pump housing.
6. Raise the pump so the shaft end faces upwards.
7. Unscrew and remove the oil plug.



TM1040045

Oil plug position

Pos.	Description
A	Oil plug
B	O-ring

8. Tilt the pump to let the oil flow out of the oil drainage hole and catch it in a tray.



Used motor oil must be disposed of in accordance with local regulations.

9. Analyse the oil: If any particles of abrasive materials, for example sand, or water are found in the oil, we recommend you to check the condition of the mechanical seal and to have it changed if necessary at a Grundfos Service Center. In this case also change the oil with about 140 ml of oil, type MARCOL 152 ESSO.
10. Add oil using a funnel inserted in the drain hole. The total amount of oil to use is 140 ml.
11. Mount and tighten the oil plug with a torque of 2.5 ± 0.2 Nm.
12. Reassembly the pump in the reverse order of the dismantling.
13. Adjust the impeller clearance.

8. Fault finding



DANGER **Electric shock**

Death or serious personal injury

- Switch off the power supply before you start any work on the product. Make sure that the power supply cannot be switched on accidentally.



CAUTION **Sharp element**

Minor or moderate personal injury

- Wear personal protective equipment.



CAUTION **Toxic material**

Minor or moderate personal injury

- The product will be classified as contaminated if it has been used for a liquid which is injurious to health or toxic.
- Wear personal protective equipment.

8.1 The motor does not start

Cause	Remedy
No power supply.	Connect the power supply.
The pump was stopped by the float switch.	Adjust or replace the float switch.
The fuses have blown.	Replace the fuses.
The motor protection or thermal relay has tripped.	Wait until the motor protection trips in again or reset the relay.
The impeller is blocked by impurities.	Clean the impeller.
Short circuit in the cable or motor.	Replace the defective part.

8.2 The motor protection or thermal relay trips after a short time of operation

Cause	Remedy
The liquid temperature is too high.	Use another pump type. Contact your local Grundfos supplier or sales support.
The impeller is blocked or partly blocked by impurities.	Clean the pump.
Phase failure.	Call an electrician.
Too low voltage.	Call an electrician.
The overload setting of the motor-protective circuit breaker is too low.	Adjust the setting.
Incorrect direction of rotation.	Reverse the direction of rotation.

8.3 The pump runs constantly or gives too little water

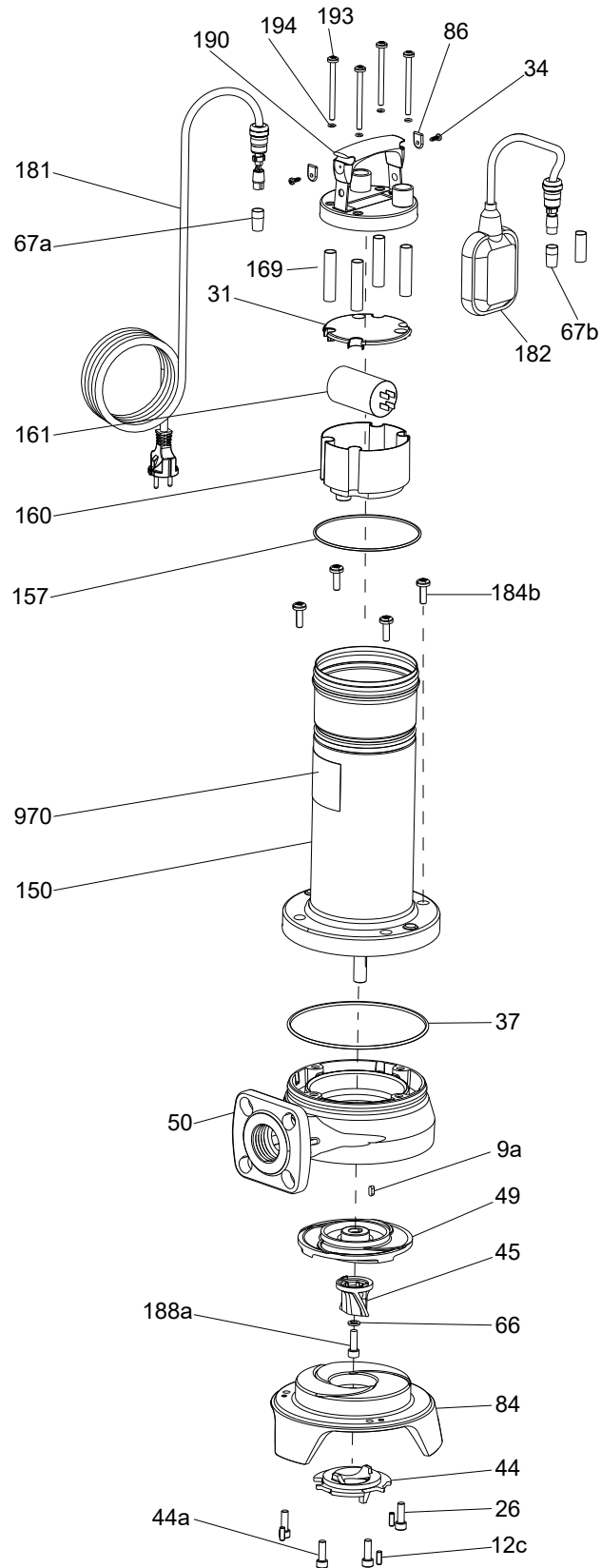
Cause	Remedy
The pump is partly blocked by impurities.	Clean the pump.
The outlet pipe or valve is partly blocked by impurities.	Clean the outlet pipe or valve.
The impeller is not properly fixed to the shaft.	Tighten the impeller.
Incorrect direction of rotation.	Reverse the direction of rotation.
Incorrect setting of the float switch.	Adjust the float switch.
The pump is too small for the application.	Replace the pump.
The impeller is worn.	Replace the impeller.

8.4 The pump runs but gives no water

Cause	Remedy
The pump is blocked by impurities.	Clean the pump.
The outlet pipe or valve is blocked by impurities.	Clean the outlet pipe or valve.
The impeller is not properly fixed to the shaft.	Tighten the impeller.
There is air in the pump.	Vent the pump and the outlet pipe.
The liquid level is too low. The pump inlet is not completely submerged in the pumped liquid.	Submerge the pump in the liquid or adjust the float switch.
Pumps with float switch: The float switch does not move freely.	Adjust the float switch.

9. Drawings

Exploded drawing



Related information

- 7.1 General information
- 7.2 Replacing the grinder system
- 7.3 Adjusting the impeller clearance
- 7.4 Replacing the cable and float switch

Argentina

Bombas GRUNDFOS de Argentina S.A.
Ruta Panamericana km. 37.500 Industiun
1619 - Garin Pcia. de B.A.
Tel.: +54-3327 414 444
Fax: +54-3327 45 3190

Australia

GRUNDFOS Pumps Pty. Ltd.
P.O. Box 2040
Regency Park
South Australia 5942
Tel.: +61-8-8461-4611
Fax: +61-8-8340-0155

Austria

GRUNDFOS Pumpen Vertrieb Ges.m.b.H.
Grundfosstraße 2
A-5082 Grödig/Salzburg
Tel.: +43-6246-883-0
Fax: +43-6246-883-30

Belgium

N.V. GRUNDFOS Bellux S.A.
Boomsesteenweg 81-83
B-2630 Aartselaar
Tel.: +32-3-870 7300
Fax: +32-3-870 7301

Belarus

Представительство ГРУНДФОС в Минске
220125, Минск
ул. Шафарьянская, 11, оф. 56, БЦ «Порт»
Tel.: +375 17 397 397 3
+375 17 397 397 4
Факс: +375 17 397 397 1
E-mail: minsk@grundfos.com

Bosnia and Herzegovina

GRUNDFOS Sarajevo
Zmaj od Bosne 7-7A
BiH-71000 Sarajevo
Tel.: +387 33 592 480
Fax: +387 33 590 465
www.ba.grundfos.com
E-mail: grundfos@bih.net.ba

Brazil

BOMBAS GRUNDFOS DO BRASIL
Av. Humberto de Alencar Castelo Branco,
630
CEP 09850 - 300
São Bernardo do Campo - SP
Tel.: +55-11 4393 5533
Fax: +55-11 4343 5015

Bulgaria

Grundfos Bulgaria EOOD
Slatina District
Iztochna Tangenta street no. 100
BG - 1592 Sofia
Tel.: +359 2 49 22 200
Fax: +359 2 49 22 201
E-mail: bulgaria@grundfos.bg

Canada

GRUNDFOS Canada inc.
2941 Brighton Road
Oakville, Ontario
L6H 6C9
Tel.: +1-905 829 9533
Fax: +1-905 829 9512

China

GRUNDFOS Pumps (Shanghai) Co. Ltd.
10F The Hub, No. 33 Suhong Road
Minhang District
Shanghai 201106 PRC
Tel.: +86 21 612 252 22
Fax: +86 21 612 253 33

Columbia

GRUNDFOS Colombia S.A.S.
Km 1.5 vía Siberia-Cota Conj. Potrero
Chico,
Parque Empresarial Arcos de Cota Bod. 1.A.
Cota, Cundinamarca
Tel.: +57(1)-2913444
Fax: +57(1)-8764586

Croatia

GRUNDFOS CROATIA d.o.o.
Buzinski prilaz 38, Buzin
HR-10010 Zagreb
Tel.: +385 1 6595 400
Fax: +385 1 6595 499
www.hr.grundfos.com

Czech Republic

GRUNDFOS Sales Czechia and Slovakia
s.r.o.
Čajkovského 21
779 00 Olomouc
Tel.: +420-585-716 111

Denmark

GRUNDFOS DK A/S
Martin Bachs Vej 3
DK-8850 Bjerringbro
Tel.: +45-87 50 50 50
Fax: +45-87 50 51 51
E-mail: info_GDK@grundfos.com
www.grundfos.com/DK

Estonia

GRUNDFOS Pumps Eesti OÜ
Peterburi tee 92G
11415 Tallinn
Tel.: + 372 606 1690
Fax: + 372 606 1691

Finland

OY GRUNDFOS Pumput AB
Trukkikuja 1
FI-01360 Vantaa
Tel.: +358-(0) 207 889 500

France

Pompes GRUNDFOS Distribution S.A.
Parc d'Activités de Chesnes
57, rue de Malacombe
F-38290 St. Quentin Fallavier (Lyon)
Tel.: +33-4 74 82 15 15
Fax: +33-4 74 94 10 51

Germany

GRUNDFOS GMBH
Schlüterstr. 33
40699 Erkrath
Tel.: +49-(0) 211 929 69-0
Fax: +49-(0) 211 929 69-3799
E-mail: infoservice@grundfos.de
Service in Deutschland:
kundendienst@grundfos.de

Greece

GRUNDFOS Hellas A.E.B.E.
20th km. Athinon-Markopoulou Av.
P.O. Box 71
GR-19002 Peania
Tel.: +0030-210-66 83 400
Fax: +0030-210-66 46 273

Hong Kong

GRUNDFOS Pumps (Hong Kong) Ltd.
Unit 1, Ground floor, Siu Wai industrial
Centre
29-33 Wing Hong Street & 68 King Lam
Street, Cheung Sha Wan
Kowloon
Tel.: +852-27861706 / 27861741
Fax: +852-27858664

Hungary

GRUNDFOS Hungária Kft.
Tópark u. 8
H-2045 Törökbálint
Tel.: +36-23 511 110
Fax: +36-23 511 111

India

GRUNDFOS Pumps india Private Limited
118 Old Mahabalipuram Road
Thoraiakkam
Chennai 600 097
Tel.: +91-44 2496 6800

Indonesia

PT GRUNDFOS Pompa
Graha intirub Lt. 2 & 3
Jin. Ciliitan Besar No.454. Makasar,
Jakarta Timur
ID-Jakarta 13650
Tel.: +62 21-469-51900
Fax: +62 21-460 6910 / 460 6901

Ireland

GRUNDFOS (Ireland) Ltd.
Unit A, Merrywell Business Park
Ballymount Road Lower
Dublin 12
Tel.: +353-1-4089 800
Fax: +353-1-4089 830

Italy

GRUNDFOS Pompe Italia S.r.l.
Via Gran Sasso 4
I-20060 Truccazzano (Milano)
Tel.: +39-02-95838112
Fax: +39-02-95309290 / 95838461

Japan

GRUNDFOS Pumps K.K.
1-2-3, Shin-Miyakoda, Kita-ku
Hamamatsu
431-2103 Japan
Tel.: +81 53 428 4760
Fax: +81 53 428 5005

Korea

GRUNDFOS Pumps Korea Ltd.
6th Floor, Aju Building 679-5
Yeoksam-dong, Kangnam-ku, 135-916
Seoul, Korea
Tel.: +82-2-5317 600
Fax: +82-2-5633 725

Latvia

SIA GRUNDFOS Pumps Latvia
Deglava biznesa centrs
Augusta Deglava ielā 60
LV-1035, Rīga,
Tel.: + 371 714 9640, 7 149 641
Fax: + 371 914 9646

Lithuania

GRUNDFOS Pumps UAB
Smolensko g. 6
LT-03201 Vilnius
Tel.: + 370 52 395 430
Fax: + 370 52 395 431

Malaysia

GRUNDFOS Pumps Sdn. Bhd.
7 Jalan Peguam U1/25
Glenmarie industrial Park
40150 Shah Alam, Selangor
Tel.: +60-3-5569 2922
Fax: +60-3-5569 2866

Mexico

Bombas GRUNDFOS de México
S.A. de C.V.
Boulevard TLC No. 15
Parque industrial Stiva Aeropuerto
Apodaca, N.L. 66600
Tel.: +52-81-8144 4000
Fax: +52-81-8144 4010

Netherlands

GRUNDFOS Netherlands
Veluwezoom 35
1326 AE Almere
Postbus 22015
1302 CA ALMERE
Tel.: +31-88-478 6336
Fax: +31-88-478 6332
E-mail: info_gnl@grundfos.com

New Zealand

GRUNDFOS Pumps NZ Ltd.
17 Beatrice Tinsley Crescent
North Harbour Industrial Estate
Albany, Auckland
Tel.: +64-9-415 3240
Fax: +64-9-415 3250

Norway

GRUNDFOS Pumper A/S
Stramsveien 344
Postboks 235, Leirdal
N-1011 Oslo
Tel.: +47-22 90 47 00
Fax: +47-22 32 21 50

Poland

GRUNDFOS Pompy Sp. z o.o.
ul. Klonowa 23
Baranowo k. Poznania
PL-62-081 Przemierowo
Tel.: (+48-61) 650 13 00
Fax: (+48-61) 650 13 50

Portugal

Bombas GRUNDFOS Portugal, S.A.
Rua Calvet de Magalhães, 241
Apartado 1079
P-2770-153 Paço de Arcos
Tel.: +351-21-440 76 00
Fax: +351-21-440 76 90

Romania

GRUNDFOS Pompe România SRL
S-PARK BUSINESS CENTER, Clădirea
A2, etaj 2
Str. Tipografilor, Nr. 11-15, Sector 1, Cod
013714
Bucuresti, Romania
Tel.: 004 021 2004 100
E-mail: romania@grundfos.ro

Russia

ООО Грундфос Россия
ул. Школьная, 39-41
Москва, RU-109544, Russia
Тел. (+7) 495 564-88-00 (495) 737-30-00
Факс (+7) 495 564 8811
E-mail grundfos.moscow@grundfos.com

Serbia

Grundfos Srbija d.o.o.
Omladinskih brigada 90b
11070 Novi Beograd
Tel.: +381 11 2258 740
Fax: +381 11 2281 769
www.rs.grundfos.com

Singapore

GRUNDFOS (Singapore) Pte. Ltd.
25 Jalan Tukang
Singapore 619264
Tel.: +65-6681 9688
Fax: +65-6681 9689

Slovakia

GRUNDFOS s.r.o.
Prievozská 4D 821 09 BRATISLAVA
Tel.: +421 2 5020 1426
sk.grundfos.com

Slovenia

GRUNDFOS LJUBLJANA, d.o.o.
Leskoškova 9e, 1122 Ljubljana
Tel.: +386 (0) 1 568 06 10
Fax: +386 (0) 1 568 06 19
E-mail: tehnika-si@grundfos.com

South Africa

GRUNDFOS (PTY) LTD
16 Lascelles Drive, Meadowbrook Estate
1609 Germiston, Johannesburg
Tel.: (+27) 10 248 6000
Fax: (+27) 10 248 6002
E-mail: lgradidge@grundfos.com

Spain

Bombas GRUNDFOS España S.A.
Camino de la Fuentequilla, s/n
E-28110 Algete (Madrid)
Tel.: +34-91-848 8800
Fax: +34-91-628 0465

Sweden

GRUNDFOS AB
Box 333 (Lunnagårdsgatan 6)
431 24 Mölndal
Tel.: +46 31 332 23 000
Fax: +46 31 331 94 60

Switzerland

GRUNDFOS Pumpen AG
Bruggacherstrasse 10
CH-8117 Fällanden/ZH
Tel.: +41-44-806 8111
Fax: +41-44-806 8115

Taiwan

GRUNDFOS Pumps (Taiwan) Ltd.
7 Floor, 219 Min-Chuan Road
Taichung, Taiwan, R.O.C.
Tel.: +886-4-2305 0868
Fax: +886-4-2305 0878

Thailand

GRUNDFOS (Thailand) Ltd.
92 Chaloom Phrakiat Rama 9 Road
Dokmai, Pravej, Bangkok 10250
Tel.: +66-2-725 8999
Fax: +66-2-725 8998

Turkey

GRUNDFOS POMPA San. ve Tic. Ltd. Sti.
Gebze Organize Sanayi Bölgesi
Ihsan dede Caddesi
2. yol 200. Sokak No. 204
41490 Gebze/ Kocaeli
Tel.: +90 - 262-679 7979
Fax: +90 - 262-679 7905
E-mail: satis@grundfos.com

Ukraine

ТОВ "ГРУНДФОС УКРАЇНА"
Бізнес Центр Європа
Столичне шосе, 103
м. Київ, 03131, Україна
Tel.: (+38 044) 237 04 00
Fax: (+38 044) 237 04 01
E-mail: ukraine@grundfos.com

United Arab Emirates

GRUNDFOS Gulf Distribution
P.O. Box 16768
Jebel Ali Free Zone, Dubai
Tel.: +971 4 8815 166
Fax: +971 4 8815 136

United Kingdom

GRUNDFOS Pumps Ltd.
Grovebury Road
Leighton Buzzard/Beds. LU7 4TL
Tel.: +44-1525-850000
Fax: +44-1525-850011

U.S.A.

GRUNDFOS Water Utility Headquarters
856 Koomey Road
Brookshire, Texas 77423 USA

Uzbekistan

Grundfos Tashkent, Uzbekistan
The Representative Office of Grundfos
Kazakhstan in Uzbekistan
38a, Oybek street, Tashkent
Tel.: (+998) 71 150 3290 / 71 150 3291
Fax: (+998) 71 150 3292

92678389 02.2022
ECM: 1333663

Trademarks displayed in this material, including but not limited to Grundfos, the Grundfos logo and "be think innovate" are registered trademarks owned by The Grundfos Group. All rights reserved. © 2022 Grundfos Holding A/S, all rights reserved.

