

CR, CRN 95-155

High temperature
(Air-cooled top)

Service instructions



Original service instructions

CONTENTS

	Page
1. General information	3
1.1 Hazard statements	3
1.2 Notes	3
1.3 Safety details to be aware of when working on the product	4
1.4 Contaminated products	4
1.5 Servicing the motor	4
2. Preparing the dismantling of the product	4
2.1 Lifting the product	4
3. Dismantling and assembling the product to service the air-cooled top	5
3.1 Motor and coupling	5
3.2 Shaft seal, motor stool, pump head cover and cover for air-cooled top	6
4. Additional information	8
4.1 Torques	8
4.2 Lubricants	8
4.3 Special service tools	9
4.4 Drawings	1
	0



Read this document before starting service work on the product. Installation and service work must comply with local regulations and accepted codes of good practice.

Observe the safety instructions in the installation and operating instructions for the product.

1. General information

1.1 Hazard statements

The symbols and hazard statements below may appear in Grundfos installation and operating instructions, safety instructions and service instructions.



DANGER

Indicates a hazardous situation which, if not avoided, will result in death or serious personal injury.



WARNING

Indicates a hazardous situation which, if not avoided, could result in death or serious personal injury.



CAUTION

Indicates a hazardous situation which, if not avoided, could result in minor or moderate personal injury.

The hazard statements are structured in the following way:



SIGNAL WORD

Description of hazard

Consequence of ignoring the warning.

- Action to avoid the hazard.

1.2 Notes

The symbols and notes below may appear in Grundfos installation and operating instructions, safety instructions and service instructions.



Observe these instructions for explosion-proof products.



A blue or grey circle with a white graphical symbol indicates that an action must be taken.



A red or grey circle with a diagonal bar, possibly with a black graphical symbol, indicates that an action must not be taken or must be stopped.



If these instructions are not observed, it may result in malfunction or damage to the equipment.



Tips and advice that make the work easier.

1.3 Safety details to be aware of when working on the product



DANGER

Electric shock

- Death or serious personal injury
- Before starting any work on the product, make sure that the power supply has been switched off and that it cannot be accidentally switched on.

WARNING

Falling objects



- Death or serious personal injury
- Follow the lifting instructions.
 - Use lifting equipment which is approved for the weight of the product.
 - Persons must keep a safe distance to the product during lifting operations.
 - Wear personal protective equipment.

For lifting instructions, see the instructions provided with the product.

WARNING

Falling objects



- Death or serious personal injury
- Keep the product in a stable and fixed position when working on it.

WARNING

Corrosive liquids



- Death or serious personal injury
- Wear personal protective equipment.

WARNING

Toxic liquids



- Death or serious personal injury
- Wear personal protective equipment.



CAUTION

Hot or cold liquid

- Minor or moderate personal injury
- Wear personal protective equipment.



CAUTION

Hot or cold surface

- Minor or moderate personal injury
- Make sure that no one can accidentally come into contact with hot or cold surfaces.



We recommend that you repair pumps with motors of 7.5 kW and up at the pump site. Necessary lifting equipment must be available.

1.4 Contaminated products



CAUTION

Biological hazard

- Minor or moderate personal injury
- Flush the product thoroughly with water and rinse the product parts in water after dismantling.

The product will be classified as contaminated if it has been used for a liquid which is injurious to health or toxic.

If you request Grundfos to service the product, contact Grundfos with details about the liquid before returning the product for service. Otherwise, Grundfos can refuse to accept the product for service.

Any application for service must include details about the liquid. Clean the product in the best possible way before you return it. Costs of returning the product are to be paid by the customer.

1.5 Servicing the motor

Grundfos MG and MGE motors

Service documentation is available in Grundfos Product Center > <http://product-selection.grundfos.com/>.

Motors of other makes

Contact the motor manufacturer.

2. Preparing the dismantling of the product

2.1 Lifting the product

Lifting procedures are described in the installation and operating instructions. Use the QR code or link below:



<http://net.grundfos.com/qr/i/99078486>

3. Dismantling and assembling the product to service the air-cooled top

These service instructions describe how to service the air-cooled top. Further details on how to service other pump parts are described in other service instructions, see the links below:

Service instructions for standard CR, CRN 95-255 pumps:



<http://net.grundfos.com/qr/i/99233360>

Service instructions for horizontal CR, CRN 95-255 pumps:



<http://net.grundfos.com/qr/i/99545380>

Service instructions for CR, CRN 95-155 pumps with tandem shaft-seal arrangement:



<http://net.grundfos.com/qr/i/99557546>

Service instructions for CR, CRN 95-155 pumps with back to back shaft-seal arrangement:



<http://net.grundfos.com/qr/i/99557544>

Service instructions for CR, CRN 95-155 pumps with bearing flange:



<http://net.grundfos.com/qr/i/99557547>

3.1 Motor and coupling

3.1.1 Removal

1. Disconnect the power supply and remove the power cable.
2. Remove the screws (7a) and coupling guards (7).
3. Remove the screws (9) and coupling halves (10a). It may be necessary to gently loosen the coupling halves with a plastic hammer.
4. Remove the cylindrical pin (10) from the pump shaft (51).
5. Attach approved lifting equipment to the motor to prevent it from falling before proceeding with any further dismantling. For correct attachment of lifting equipment, see instructions supplied with the pump.
6. Remove the screws (28), washers (32) and nuts (36).
7. Carefully lift the motor off the pump using approved lifting equipment. For lifting the motor correctly, see instructions supplied with the pump.

3.1.2 Installation

1. Carefully lift the motor onto the motor stool (1a) using approved lifting equipment.
2. Install the screws (28), washers (32) and nuts (36).
3. Lubricate and tighten the nuts (36) to the specified torque. See section 4.1 *Torques*.
4. Install the cylindrical pin (10) in the pump shaft (51).
5. Install the coupling halves (10a).
6. Lubricate and tighten the screws (9), but leave loose. See section 4.2 *Lubricants*.
7. Check that the gaps on either side of the coupling halves are equal. See fig. 1.

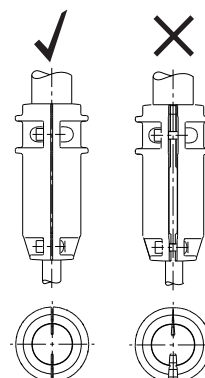


Fig. 1 Gap between coupling halves

8. Tighten the three set screws (113) to the specified torque. See section 4.1 *Torques*.
9. Lift the pump shaft with a crowbar and insert the adjusting fork D. See fig. 2.

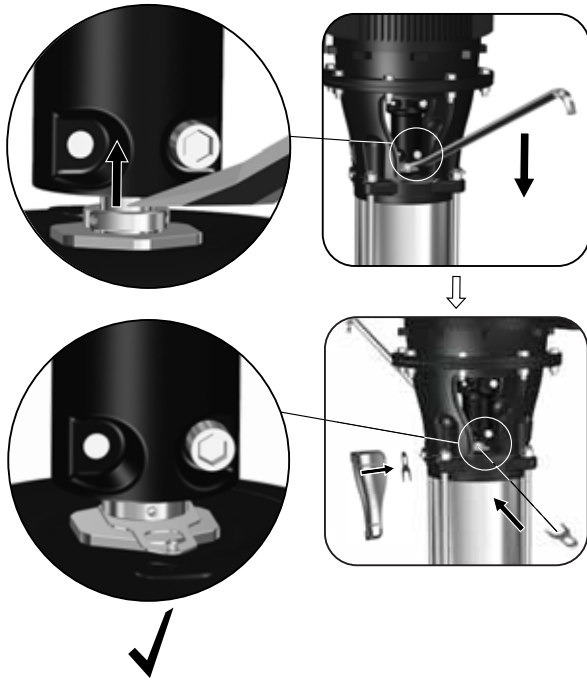


Fig. 2 Lifting pump shaft and fitting adjusting fork.

10. Cross-tighten the screws (9) to the specified torque. See *4.1 Torques*.
11. Pull the adjusting fork D free of the shaft (51) and place it on the backside of one of the coupling guards (7). See fig. 3.



Fig. 3 Fitting adjusting fork D on the backside of coupling guard (7)

12. Install the coupling guards (7) and tighten the screws (7a). See section *4.1 Torques*.

TM07 0868 1418

TM07 1743 2218

3.2 Shaft seal, motor stool, pump head cover and cover for air-cooled top

3.2.1 Preparations

1. Remove the motor as described in section *3.1.1 Removal*.
2. Close the isolating valves, if fitted, to avoid draining the pipe system.
3. Drain the pump by loosening the vent screw (18) and removing the plugs (25) and o-rings (38) placed in the pump base.

3.2.2 Dismantling

1. Clean the end of the shaft (51) with a cloth.
2. If the shaft seal (105) is to be reused, remove any marks or scratches on the shaft (51) by using service tool C together with a piece of fine emery cloth.
3. Loosen the three set screws (113) of the shaft seal (105). Note that the set screws must be loosened no more than 1/4 turn.
4. Loosen the shaft seal by using service tool A together with service tools E and F.
5. Carefully lift the shaft seal (105) off the shaft (51).
Note: Shaft seals fitted on pumps with $\varnothing 28$ and $\varnothing 36$ pump shafts can be fitted with new wear parts. See the service instructions for standard CR, CRN 95-155 pumps, see QR code and link below.



<http://net.grundfos.com/qr/i/99233360>

6. Attach approved lifting equipment to the motor stool (1a) to prevent it from falling before proceeding with any further dismantling.
7. Remove the nuts (36) and washers (66a).
8. If fitted, loosen and remove the bracket for the auto air-vent (118).
9. Remove the motor stool (1a).
10. Remove the pump head cover (2). It may be necessary to loosen it from the cover (2b) using a plastic hammer.
Note: Make sure not to move or damage the auto air-vent (118) or the pipe (117).
11. Remove the o-ring (37) from the pump head cover.
12. Install two eyebolts in the threaded holes of the separator (79) and gently pull up the separator (79) without damaging the internal grafion bushes.
13. Remove the two o-rings (79a) and (109).
14. Remove the cover (2b).
15. Remove the o-ring (37) from the cover (2b).

3.2.3 Assembly

1. Clean and smooth the shaft (51) using service tool C with an emery cloth supplied with the shaft-seal kit.
2. Lubricate and install a new o-ring (37) in the cover (2b).
3. Install the cover (2b) on the sleeve (55).
Note: Make sure to align the cover (2b) according to the alignment marks on the sleeve (55). See fig. 4.

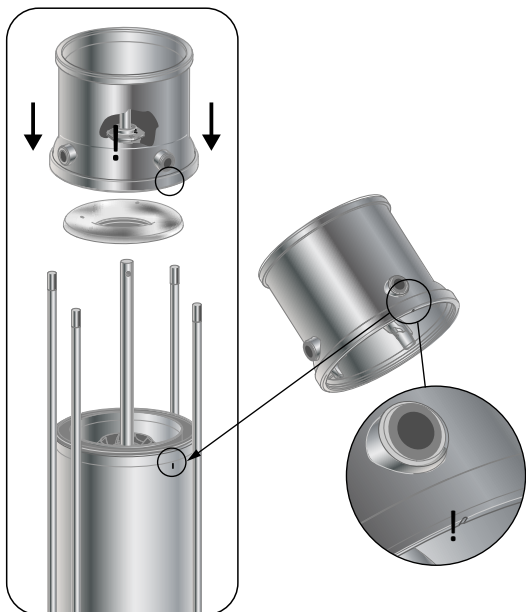


Fig. 4 Aligning cover (2), cover (2b) and sleeve (55)

4. Lubricate and install a new o-ring (79a) in the separator (79).
5. Lubricate and install a new o-ring (109).
6. Install the separator (79) gently in the cover (2b) so that the grafalon bushes in the separator (79) are not damaged.
7. Lubricate and install a new o-ring (37) in the pump head cover (2).
8. Install the pump head cover (2) on the cover (2b). Use service tool G to centre the chamber stack in the pump head cover (2). See fig. 5.
Note: Make sure to align the pump head cover (2) according to the alignment marks on the pump head cover (2), the cover (2b) and on the sleeve (55). See fig. 4.

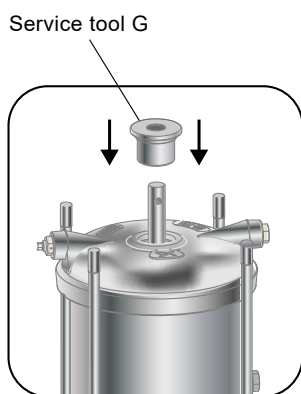


Fig. 5 Fitting service tool G in the pump head cover (2)

9. Attach approved lifting equipment to the motor stool (1a) and lift the motor stool (1a) onto the pump head cover (2).
10. Lubricate the threads of the staybolts (26).
11. Install the washers (66a) and nuts (36) and cross-tighten the nuts (36) to the specified torque. See sections 4.1 *Torques* and 4.2 *Lubricants*.
12. Remove service tool G.
13. Install the shaft seal (105) in the cover (2). See section 4.1 *Torques*.
14. Check that the height X is maximum 71 mm. See fig. 6.
Note: If the measured height is not within the specifications, the pump has not been assembled correctly and the pump must be dismantled to find the reason.

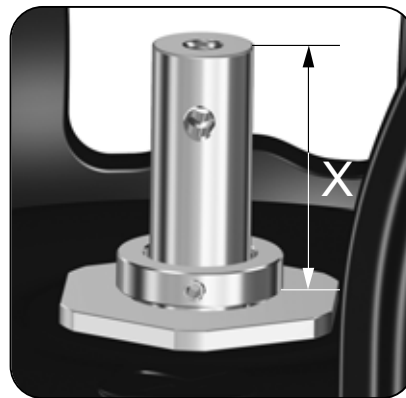


Fig. 6 Height measurement X

15. Install the motor and coupling as described in section 3.1.2 *Installation*.

TM07 3566 5118

TM07 3635 0119

TM07 0969 1018

4. Additional information

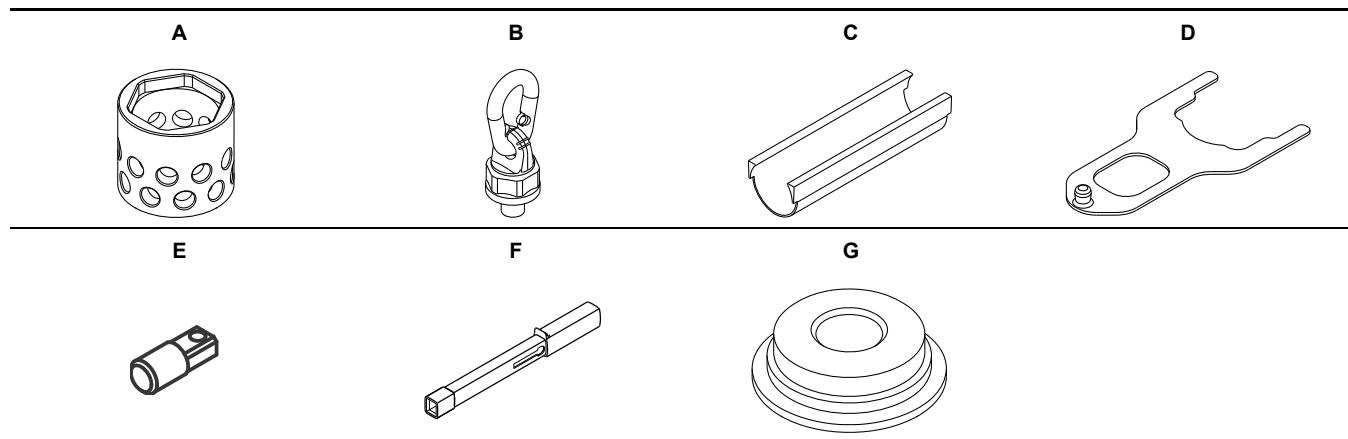
4.1 Torques

Pos.	Description	Dimensions	Torque [Nm]
7a	Coupling-guard screws	M5	4
9	Coupling screws	M10	85
		M16	100
18	Vent screw	1/2"	35
25	Plug	1/2"	35
		M16 (CR, CRN 95, PN 16/25/30)	160
		M20 (CR, CRN 95, PN 25)	220
		M20 (CR, CRN 95, PN 30/40)	320
		M20 (CR, CRN 95/125/155, PN 16)	190
		M20 (CR, CRN 125/155, PN 25/30)	320
		M24 (CR, CRN 125/155, PN 16)	190
		M24 (CR, CRN 125/155, PN 25/30/40)	625
		M30 (CR, CRN 185/215/255, PN 16)	410
		M30 (CR, CRN 185/215/255, PN 25)	710
36	Staybolt nuts	M30 (CR, CRN 185/215/255, PN 40)	950
		M12	40
		M16	80
		M20	150
105	Shaft seal	Hex 60	100
		Hex 75	150
113	Shaft-seal-set screws	M6 x 8	6

4.2 Lubricants

Pos.	Description	Lubricant	Product no.
9	Hexagon-socket screw		
26	Staybolt	Un Lock	96611372
36	Nut		
37	O-ring	Rocol Sapphire Aqua-Sil	00RM2924
109	O-ring for shaft seal (105)		
110	O-ring for shaft seal (105)		

4.3 Special service tools



Pos.	Description	For pos.	Further information	Part number
A	Service tool for loosening and tightening shaft seal	105	For $\varnothing 22$ pump shafts	99072586
			For $\varnothing 28$ and $\varnothing 36$ pump shafts	99072587
B	Eyebolt with swivel function	51	M10 x 1.5	-
C	Service tool for smoothening out marks on shaft	51	-	-
D	Adjusting fork	105	For $\varnothing 22$, $\varnothing 28$ and $\varnothing 36$ pump shafts	-
E	Pin for torque wrench	105	14 x 18 x $\varnothing 14$	SV0402
F	Torque wrench	105	-	-
G	Service tool for alignment of pump head, sleeve and chamber stack	2, 51	For $\varnothing 22$ pump shafts	99072588
			For $\varnothing 28$ pump shafts	99072589

4.4 Drawings

4.4.1 Exploded views

Pumps with Ø22 shaft

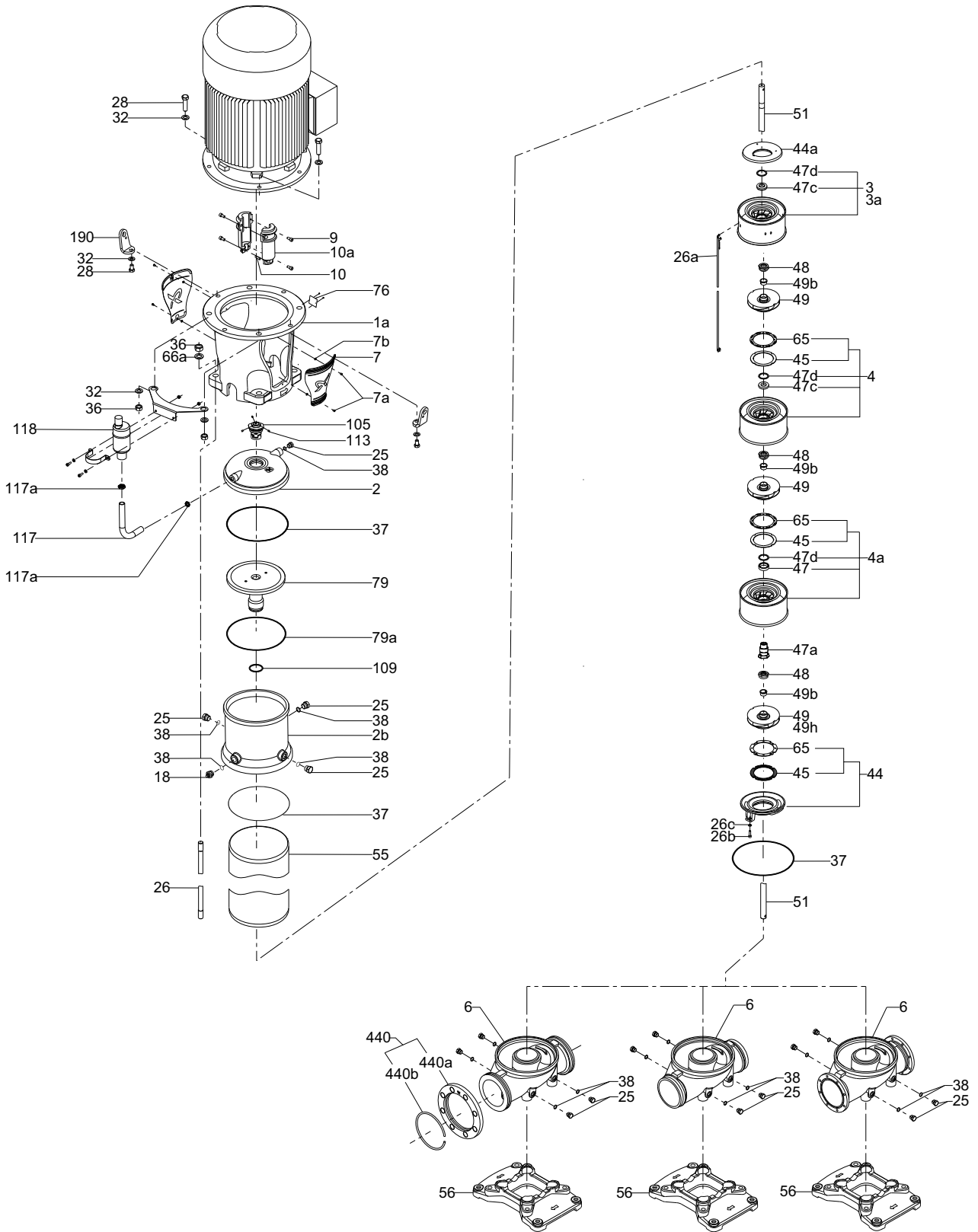


Fig. 7 Exploded view of CR, CRN pump with air-cooled top

TM07 3790 0319

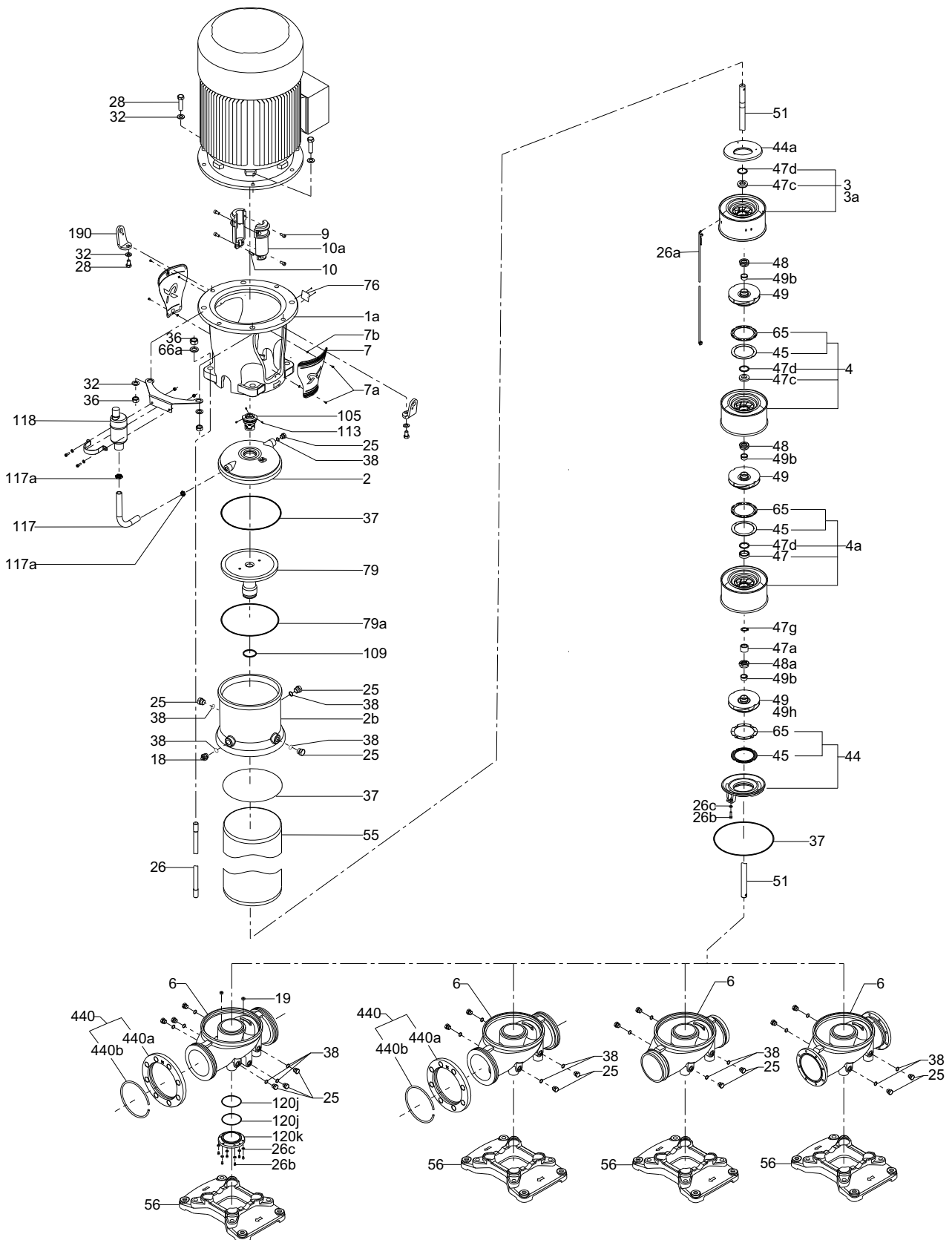


Fig. 8 Exploded view of CR, CRN pump with air-cooled top

4.4.2 Sectional views
Pumps with Ø22 shaft

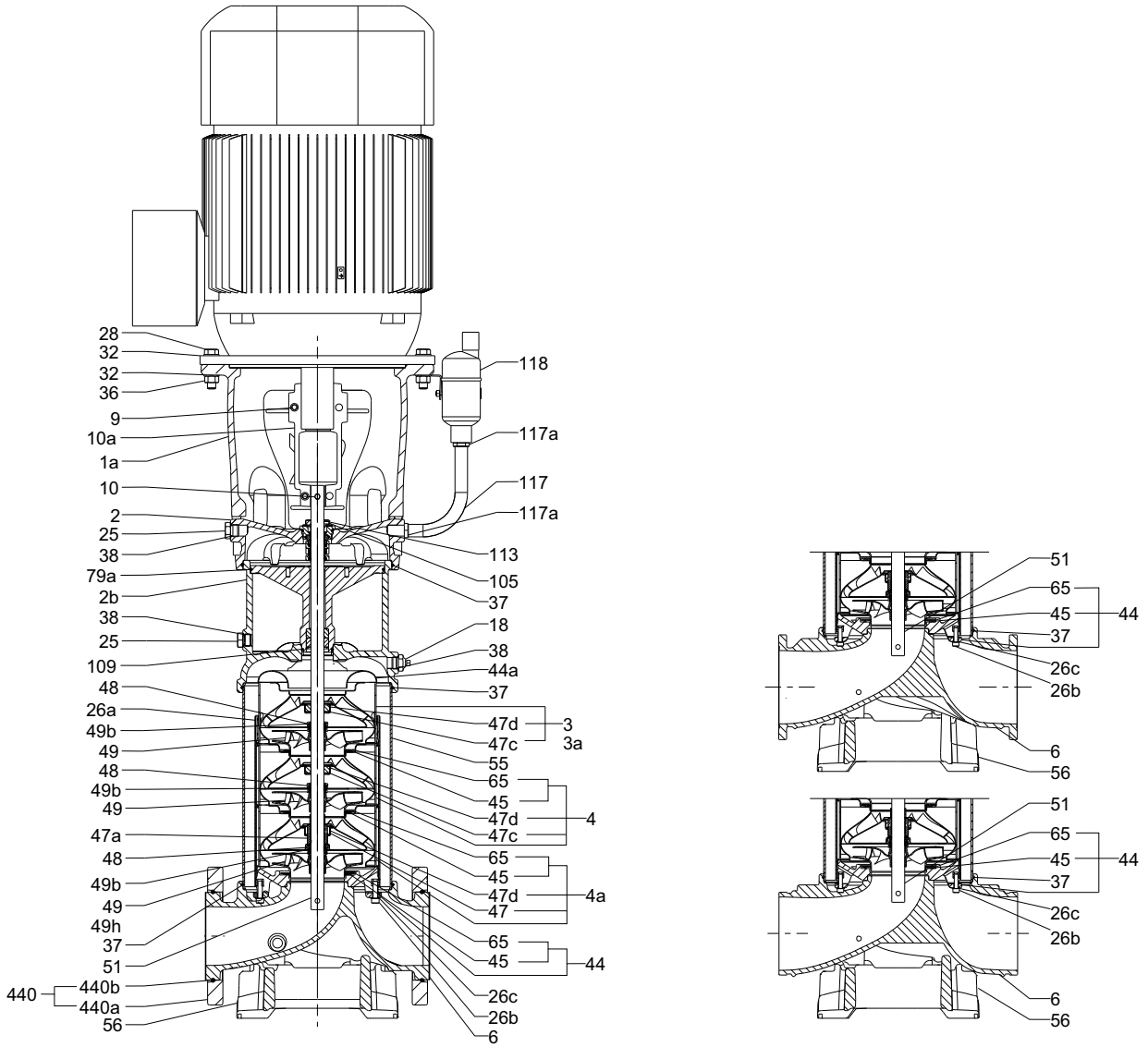


Fig. 9 Sectional view of CR, CRN pump with air-cooled top

TM07 3792 0319

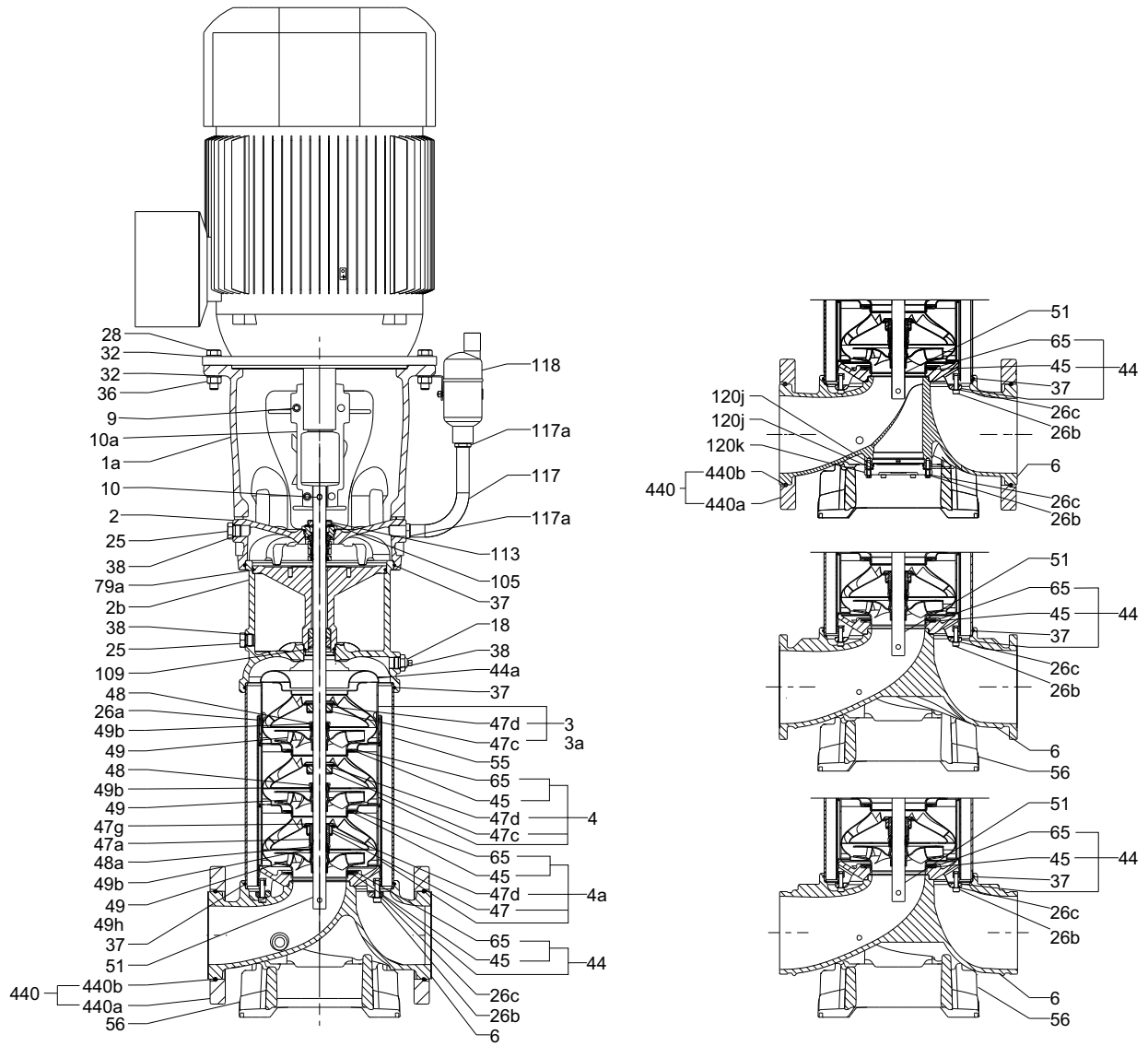


Fig. 10 Sectional view of CR, CRN pump with air-cooled top

TM07 3791 0319

Argentina

Bombas GRUNDFOS de Argentina S.A.
Ruta Panamericana km. 37.500 Centro
Industrial Garin
1619 Garin Pcia. de B.A.
Phone: +54-3327 414 444
Telefax: +54-3327 45 3190

Australia

GRUNDFOS Pumps Pty. Ltd.
P.O. Box 2040
Regency Park
South Australia 5942
Phone: +61-8-8461-4611
Telefax: +61-8-8340 0155

Austria

GRUNDFOS Pumpen Vertrieb Ges.m.b.H.
Grundfosstraße 2
A-5082 Grödig/Salzburg
Tel.: +43-6246-883-0
Telefax: +43-6246-883-30

Belgium

N.V. GRUNDFOS Bellux S.A.
Boomssesteenweg 81-83
B-2630 Aartselaar
Tél.: +32-3-870 7300
Télécopie: +32-3-870 7301

Belarus

Представительство ГРУНДФОС в
Минске
220125, Минск
ул. Шафарнянская, 11, оф. 56, БЦ
«Порт»
Тел.: +7 (375 17) 286 39 72/73
Факс: +7 (375 17) 286 39 71
E-mail: minsk@grundfos.com

Bosnia and Herzegovina

GRUNDFOS Sarajevo
Zmaja od Bosne 7-7A,
BH-71000 Sarajevo
Phone: +387 33 592 480
Telefax: +387 33 590 465
www.ba.grundfos.com
e-mail: grundfos@bih.net.ba

Brazil

BOMBAS GRUNDFOS DO BRASIL
Av. Humberto de Alencar Castelo Branco,
630
CEP 09850 - 300
São Bernardo do Campo - SP
Phone: +55-11 4393 5533
Telefax: +55-11 4343 5015

Bulgaria

Grundfos Bulgaria EOOD
Slatina District
Iztochna Tangenta street no. 100
BG - 1592 Sofia
Tel. +359 2 49 22 200
Fax. +359 2 49 22 201
email: bulgaria@grundfos.bg

Canada

GRUNDFOS Canada Inc.
2941 Brighton Road
Oakville, Ontario
L6H 6C9
Phone: +1-905 829 9533
Telefax: +1-905 829 9512

China

GRUNDFOS Pumps (Shanghai) Co. Ltd.
10F The Hub, No. 33 Suhong Road
Minhang District
Shanghai 201106
PRC
Phone: +86 21 612 252 22
Telefax: +86 21 612 253 33

COLOMBIA

GRUNDFOS Colombia S.A.S.
Km 1.5 vía Siberia-Cota Conj. Potrero
Chico,
Parque Empresarial Arcos de Cota Bod.
1A.
Cota, Cundinamarca
Phone: +57(1)-2913444
Telefax: +57(1)-8764586

Croatia

GRUNDFOS CROATIA d.o.o.
Buzinski prilaz 38, Buzin
HR-10010 Zagreb
Phone: +385 1 6595 400
Telefax: +385 1 6595 499
www.hr.grundfos.com

GRUNDFOS Sales Czechia and Slovakia s.r.o.

Čajkovského 21
779 00 Olomouc
Phone: +420-585-716 111

Denmark

GRUNDFOS DK A/S
Martin Bachs Vej 3
DK-8850 Bjerringbro
Tlf.: +45-87 50 50 50
Telefax: +45-87 50 51 51
E-mail: info_GDK@grundfos.com
www.grundfos.com/DK

Estonia

GRUNDFOS Pumps Eesti OÜ
Peterburi tee 92G
11415 Tallinn
Tel: + 372 606 1690
Fax: + 372 606 1691

Finland

OY GRUNDFOS Pumput AB
Trukkikuja 1
FI-01360 Vantaa
Phone: +358-(0) 207 889 500

France

Pompes GRUNDFOS Distribution S.A.
Parc d'Activités de Chesnes
57, rue de Malacombes
F-38290 St. Quentin Fallavier (Lyon)
Tél.: +33-4 74 82 15 15
Télécopie: +33-4 74 94 10 51

Germany

GRUNDFOS GMBH
Schlüterstr. 33
40699 Erkrath
Tel.: +49-(0) 211 929 69-0
Telefax: +49-(0) 211 929 69-3799
e-mail: infoservice@grundfos.de
Service in Deutschland:
e-mail: kundendienst@grundfos.de

Greece

GRUNDFOS Hellas A.E.B.E.
20th km. Athinon-Markopoulou Av.
P.O. Box 71
GR-19002 Peania
Phone: +0030-210-66 83 400
Telefax: +0030-210-66 46 273

Hong Kong

GRUNDFOS Pumps (Hong Kong) Ltd.
Unit 1, Ground floor
Siu Wai Industrial Centre
29-33 Wing Hong Street &
68 King Lam Street, Cheung Sha Wan
Kowloon
Phone: +852-27861706 / 27861741
Telefax: +852-27858664

Hungary

GRUNDFOS Hungária Kft.
Tópark u. 8
H-2045 Törökbálint,
Phone: +36-23 511 110
Telefax: +36-23 511 111

India

GRUNDFOS Pumps India Private Limited
118 Old Mahabalipuram Road
Thoraiakkam
Chennai 600 096
Phone: +91-44 2496 6800

Indonesia

PT. GRUNDFOS POMPA
Graha Intirub Lt. 2 & 3
Jln. Cililitan Besar No.454. Makasar,
Jakarta Timur
ID-Jakarta 13650
Phone: +62 21-469-51900
Telefax: +62 21-460 6910 / 460 6901

Ireland

GRUNDFOS (Ireland) Ltd.
Unit A, Merrywell Business Park
Ballymount Road Lower
Dublin 12
Phone: +353-1-4089 800
Telefax: +353-1-4089 830

Italy

GRUNDFOS Pompe Italia S.r.l.
Via Gran Sasso 4
I-20060 Truccazzano (Milano)
Tel.: +39-02-95838112
Telefax: +39-02-95309290 / 95838461

Japan

GRUNDFOS Pumps K.K.
1-2-3, Shin-Miyakoda, Kita-ku,
Hamamatsu
431-2103 Japan
Phone: +81 53 428 4760
Telefax: +81 53 428 5005

Korea

GRUNDFOS Pumps Korea Ltd.
6th Floor, Aju Building 679-5
Yeoksam-dong, Kangnam-ku, 135-916
Seoul, Korea
Phone: +82-2-5317 600
Telefax: +82-2-5633 725

Latvia

SIA GRUNDFOS Pumps Latvia
Deglava biznesa centrs
Augusta Deglava ielā 60, LV-1035, Rīga,
Tālr.: + 371 714 9640, 7 149 641
Fakss: + 371 914 9646

Lithuania

GRUNDFOS Pumps UAB
Smolensko g. 6
LT-03201 Vilnius
Tel: + 370 52 395 430
Fax: + 370 52 395 431

Malaysia

GRUNDFOS Pumps Sdn. Bhd.
7 Jalan Peguam U1/25
Glenmarie Industrial Park
40150 Shah Alam
Selangor
Phone: +60-3-5569 2922
Telefax: +60-3-5569 2866

Mexico

Bombas GRUNDFOS de México S.A. de
C.V.
Boulevard TLC No. 15
Parque Industrial Stiva Aeropuerto
Apodaca, N.L. 66600
Phone: +52-81-8144 4000
Telefax: +52-81-8144 4010

Netherlands

GRUNDFOS Netherlands
Veluwezoom 35
1326 AE Almere
Postbus 22015
1302 CA ALMERE
Tel.: +31-88-478 6336
Telefax: +31-88-478 6332
E-mail: info_gnl@grundfos.com

New Zealand

GRUNDFOS Pumps NZ Ltd.
17 Beatrice Tinsley Crescent
North Harbour Industrial Estate
Albany, Auckland
Phone: +64-9-415 3240
Telefax: +64-9-415 3250

Norway

GRUNDFOS Pumper A/S
Strømsveien 344
Postboks 235, Leirdal
N-1011 Oslo
Tlf.: +47-22 90 47 00
Telefax: +47-22 32 21 50

Poland

GRUNDFOS Pompy Sp. z o.o.
ul. Klonowa 23
Baranowo k. Poznania
PL-62-081 Przeźmierowo
Tel: (+48-61) 650 13 00
Fax: (+48-61) 650 13 50

Portugal

Bombas GRUNDFOS Portugal, S.A.
Rua Calvet de Magalhães, 241
Apartado 1079
P-2770-153 Paço de Arcos
Tel.: +351-21-440 76 00
Telefax: +351-21-440 76 90

Romania

GRUNDFOS Pompe România SRL
Bd. Biruintei, nr 103
Pantelimon county Ilfov
Phone: +40 21 200 4100
Telefax: +40 21 200 4101
E-mail: romania@grundfos.ro

Russia

ООО Грундфос Россия
ул. Школьная, 39-41
Москва, RU-109544, Russia
Тел. (+7) 495 564-88-00 (495) 737-30-00
Факс (+7) 495 564 8811
E-mail grundfos.moscow@grundfos.com

Serbia

Grundfos Srbija d.o.o.
Omladinskih brigada 90b
11070 Novi Beograd
Phone: +381 11 2258 740
Telefax: +381 11 2281 769
www.rs.grundfos.com

Singapore

GRUNDFOS (Singapore) Pte. Ltd.
25 Jalan Tukang
Singapore 619264
Phone: +65-6681 9688
Telefax: +65-6681 9689

Slovakia

GRUNDFOS s.r.o.
Prievozská 4D
821 09 BRATISLAVA
Phona: +421 2 5020 1426
sk.grundfos.com

Slovenia

GRUNDFOS LJUBLJANA, d.o.o.
Leskoškova 9e, 1122 Ljubljana
Phone: +386 (0) 1 568 06 10
Telefax: +386 (0) 1 568 06 19
E-mail: tehnika-si@grundfos.com

South Africa

Grundfos (PTY) Ltd.
16 Lascalles Drive, Meadowbrook Estate
1609 Germiston, Johannesburg
Tel.: (+27) 10 248 6000
Fax: (+27) 10 248 6002
E-mail: lgradidge@grundfos.com

Spain

Bombas GRUNDFOS España S.A.
Camino de la Fuentecilla, s/n
E-28110 Algete (Madrid)
Tel.: +34-91-848 8800
Telefax: +34-91-628 0465

Sweden

GRUNDFOS AB
Box 333 (Lunnagårdsgatan 6)
431 24 Mölndal
Tel.: +46 31 332 23 000
Telefax: +46 31 331 94 60

Switzerland

GRUNDFOS Pumpen AG
Bruggacherstrasse 10
CH-8117 Fällanden/ZH
Tel.: +41-44-806 8111
Telefax: +41-44-806 8115

Taiwan

GRUNDFOS Pumps (Taiwan) Ltd.
7 Floor, 219 Min-Chuan Road
Taichung, Taiwan, R.O.C.
Phone: +886-4-2305 0868
Telefax: +886-4-2305 0878

Thailand

GRUNDFOS (Thailand) Ltd.
92 Chaloe Phrakiat Rama 9 Road,
Dokmai, Pravej, Bangkok 10250
Phone: +66-2-725 8999
Telefax: +66-2-725 8998

Turkey

GRUNDFOS POMPA San. ve Tic. Ltd. Sti.
Gebze Organize Sanayi Bölgesi
Ihsan dede Caddesi,
2. yol 200. Sokak No. 204
41490 Gebze/ Kocaeli
Phone: +90 - 262-679 7979
Telefax: +90 - 262-679 7905
E-mail: satis@grundfos.com

Ukraine

Бізнес Центр Європа
Столицне шосе, 103
м. Київ, 03131, Україна
Телефон: (+38 044) 237 04 00
Факс.: (+38 044) 237 04 01
E-mail: ukraine@grundfos.com

United Arab Emirates

GRUNDFOS Gulf Distribution
P.O. Box 16768
Jebel Ali Free Zone
Dubai
Phone: +971 4 8815 166
Telefax: +971 4 8815 136

United Kingdom

GRUNDFOS Pumps Ltd.
Grovebury Road
Leighton Buzzard/Beds. LU7 4TL
Phone: +44-1525-850000
Telefax: +44-1525-850011

U.S.A.

GRUNDFOS Pumps Corporation
9300 Loiret Blvd.
Lenexa, Kansas 66219
Phone: +1-913-227-3400
Telefax: +1-913-227-3500

Uzbekistan

Grundfos Tashkent, Uzbekistan The Repre-
sentative Office of Grundfos Kazakhstan in
Uzbekistan
38a, Oybek street, Tashkent
Телефон: (+998) 71 150 3290 / 71 150
3291
Факс: (+998) 71 150 3292

Addresses Revised 15.01.2019

99595177 0320

ECM: 1279993

Trademarks displayed in this material, including but not limited to Grundfos, the Grundfos logo and "be think innovate" are registered trademarks owned by The Grundfos Group. All rights reserved. © 2020 Grundfos Holding A/S. All rights reserved.