

CRI BOILER




The Grundfos CRI Boiler series is based on the proven design of the Grundfos CR vertical multistage pump range and is specifically built to operate in boiler feedwater applications.

With liquid contact components of high quality grade AISI 304 Stainless Steel, and featuring our premium cartridge mechanical seal designed for temperatures of up to 120°C, the CRI Boiler series offers optimised NPSH performance for boiler feedwater applications that is second to none.



OPERATING CONDITIONS

Liquid Temperature	-20 to +120°C
Ambient Temperature	40°C (0.37 - 0.55 kW) 60°C (0.75 - 22k W)
Maximum Inlet Pressure	10 / 15 Bar
Maximum Operating Pressure	16 / 25 Bar

SPECIFICATIONS

Warranty	3 Years on Pump & Motor
Liquid Contact Parts	Stainless Steel - AISI 304
Mechanical Seal	Cartridge SiC / SiC / EPDM
Power Supply	3 x 415 V
Enclosure Class (IP)	IP55
Motor Efficiency	IE3

CUSTOMISED SOLUTIONS

Integrated Variable Speed	CRIE (MGE motor)
Motor Efficiency Rating	IE5 with CRIE
High Temperature	Up to +180°C
Power Supply	1 x 240 V
High Pressure Variants	Up to 50 Bar
Enclosure Class (IP)	IP66
Alternative Materials	Stainless Steel (316)
Alternative Connections	Victaulic / ANSI
Extended Flow Range	Up to 200 m ³ /h
Explosive Atmosphere	ATEX

ON REQUEST

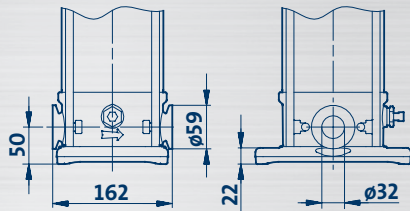
Contact Grundfos for more details on our extensive range of customised boiler feed and circulation pump options.

MODELS

Model ¹	Part Number	Motor Size (kW)	Power Supply (V) ²	Full Load Current (Amps)	Connection Type ³	Connection Kits ³	Max Inlet (Bar)	Max Case (Bar)	Minimum Allowable Pump Flow (m ³ /h)
CRI 1S - 15	99514392	0.55	3 x 415	1.58	CA - Oval	A or B	10	16	0.23
CRI 1S - 17	99514403	0.55	3 x 415	1.58	CA - Oval	A or B	10	16	0.23
CRI 1S - 19	99514404	0.55	3 x 415	1.58	CA - Oval	A or B	10	16	0.23
CRI 1S - 21	99514405	0.75	3 x 415	2.10	CA - Oval	A or B	10	16	0.23
CRI 1S - 23	99514406	0.75	3 x 415	2.10	CA - Oval	A or B	10	16	0.23
CRI 1S - 25	99514407	0.75	3 x 415	2.10	CA - Oval	A or B	10	16	0.23
CRI 1S - 27	99514408	1.1	3 x 415	2.75	CA - Oval	A or B	10	16	0.23
CRI 1 - 15	99438197	0.75	3 x 415	2.10	CA - Oval	A or B	10	16	0.5
CRI 1 - 17	99438214	1.1	3 x 415	2.75	CA - Oval	A or B	10	16	0.5
CRI 1 - 19	99514886	1.1	3 x 415	2.75	CA - Oval	A or B	10	16	0.5
CRI 1 - 21	99438989	1.1	3 x 415	2.75	CA - Oval	A or B	10	16	0.5
CRI 1 - 23	99439043	1.1	3 x 415	2.75	CA - Oval	A or B	10	16	0.5
CRI 1 - 25	99439044	1.5	3 x 415	3.45	FGJ - DN 25/32	E or F	10	25	0.5
CRI 1 - 27	99514409	1.5	3 x 415	3.45	FGJ - DN 25/32	E or F	10	25	0.5
CRI 3 - 13	99439062	1.1	3 x 415	2.75	CA - Oval	A or B	10	16	0.8
CRI 3 - 15	99439073	1.1	3 x 415	2.75	CA - Oval	A or B	10	16	0.8
CRI 3 - 17	99439074	1.5	3 x 415	3.45	CA - Oval	A or B	10	16	0.8
CRI 3 - 19	99439075	1.5	3 x 415	3.45	CA - Oval	A or B	10	16	0.8
CRI 3 - 21	99514410	2.2	3 x 415	4.90	CA - Oval	A or B	10	16	0.8
CRI 3 - 23	99439078	2.2	3 x 415	4.90	CA - Oval	A or B	10	16	0.8
CRI 3 - 25	99439080	2.2	3 x 415	4.90	FGJ - DN 25/32	E or F	10	25	0.8
CRI 3 - 27	99439081	2.2	3 x 415	4.90	FGJ - DN 25/32	E or F	10	25	0.8
CRI 3 - 29	99439084	2.2	3 x 415	4.90	FGJ - DN 25/32	E or F	10	25	0.8
CRI 5 - 18	99439091	3	3 x 415	6.90	CA - Oval	B	15	16	1.5
CRI 5 - 20	99439103	3	3 x 415	6.90	CA - Oval	B	15	16	1.5
CRI 5 - 22	99439105	4	3 x 415	8.70	FGJ - DN 25/32	E or F	15	25	1.5
CRI 5 - 24	99439107	4	3 x 415	8.70	FGJ - DN 25/32	E or F	15	25	1.5
CRI 5 - 26	99514413	4	3 x 415	8.70	FGJ - DN 25/32	E or F	15	25	1.5
CRI 5 - 29	99514414	4	3 x 415	8.70	FGJ - DN 25/32	E or F	15	25	1.5
CRI 10 - 12	99514415	4	3 x 415	8.70	FGJ - DN 40	G to J	10	25	2.5
CRI 10 - 14	99439130	5.5	3 x 415	12.2	FGJ - DN 40	G to J	10	25	2.5
CRI 10 - 16	99478015	7.5	3 x 415	15.4	FGJ - DN 40	G to J	10	25	2.5
CRI 10 - 18	99439144	7.5	3 x 415	15.4	FGJ - DN 40	I or J	10	25	2.5
CRI 10 - 20	99439148	7.5	3 x 415	15.4	FGJ - DN 40	I or J	10	25	2.5
CRI 10 - 22	99439163	7.5	3 x 415	15.4	FGJ - DN 40	I or J	10	25	2.5
CRI 15 - 9	99514416	11	3 x 415	19.8	FGJ - DN50	K to N	10	25	4.3
CRI 15 - 10	99514417	11	3 x 415	19.8	FGJ - DN50	K to N	10	25	4.3
CRI 15 - 12	99439170	11	3 x 415	19.8	FGJ - DN 50	M or N	10	25	4.3
CRI 15 - 14	99439174	15	3 x 415	28.5	FGJ - DN 50	M or N	10	25	4.3
CRI 15 - 17	99439177	15	3 x 415	28.5	FGJ - DN 50	M or N	10	25	4.3

CA - OVAL CONNECTIONS (2 KITS REQUIRED PER PUMP)

Fits Pump Type	Kit	Part Number	Description (Consists of 1 adapter, 1 gasket, bolts & nuts)	Connection Size
CRI 1S to CRI 5 (CA)	A	96449746	Oval adapter - Threaded PN16 (AISI) 316 Stainless Steel	1" BSP
	B	96449747	Oval adapter - Threaded PN16 (AISI) 316 Stainless Steel	1 - 1/4" BSP



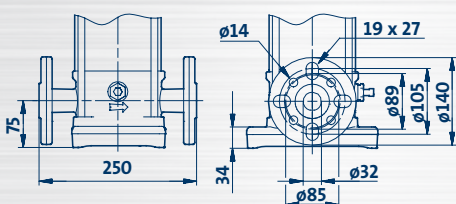
CRI 1S - CRI 5 (CA Version)



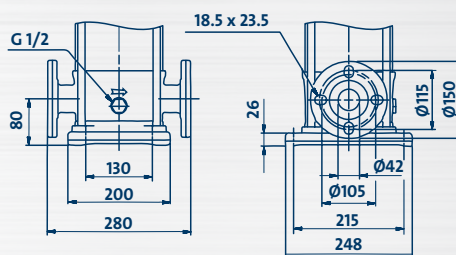
Oval adapter (CA Version)

FGJ - FLANGED CONNECTIONS (2 KITS REQUIRED PER PUMP)

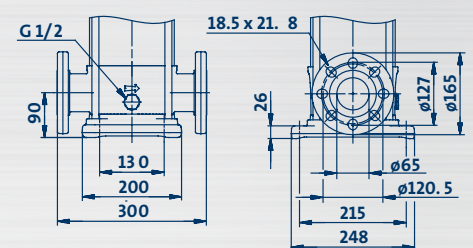
Fits Pump Type	Kit	Part Number	Description (Consists of 1 adapter, 1 gasket, bolts & nuts)	Connection Size
CRI 1 to CRI 5 (FGJ)	C	419901	Counter flange - Threaded PN16 (Cast Iron)	1 - 1/4" BSP
	D	415304	Counter flange - Threaded PN16 (316 Stainless Steel)	1 - 1/4" BSP
	E	419902	Counter flange - For welding PN25 (Cast Iron)	32 mm
	F	415305	Counter flange - For welding PN25 (316 Stainless Steel)	32 mm
CRI 10 (FGJ)	G	429902	Counter flange - Threaded PN16 (Cast Iron)	1 - 1/2" BSP
	H	425245	Counter flange - Threaded PN16 (316 Stainless Steel)	1 - 1/2" BSP
	I	429901	Counter flange - For welding PN25 (Cast Iron)	40 mm
	J	425246	Counter flange - For welding PN25 (316 Stainless Steel)	40 mm
CRI 15 (FGJ)	K	339903	Counter flange - Threaded PN16 (Cast Iron)	2" BSP
	L	335254	Counter flange - Threaded PN16 (316 Stainless Steel)	2" BSP
	M	339901	Counter flange - For welding PN25 (Cast Iron)	50 mm
	N	335255	Counter flange - For welding PN25 (316 Stainless Steel)	50 mm



CRI 1S - CRI 5 (FGJ Version)



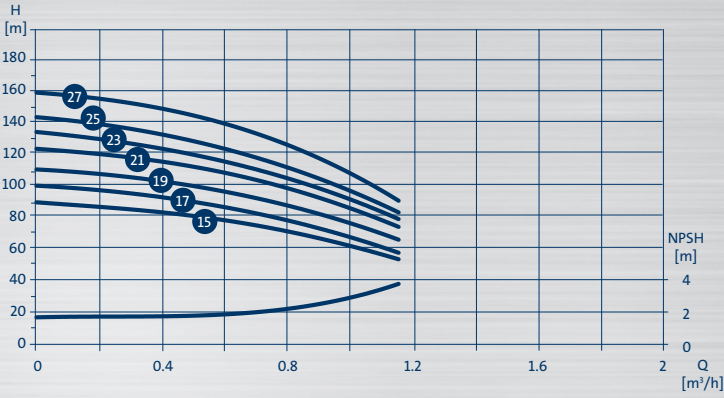
CRI 10 (FGJ Version)



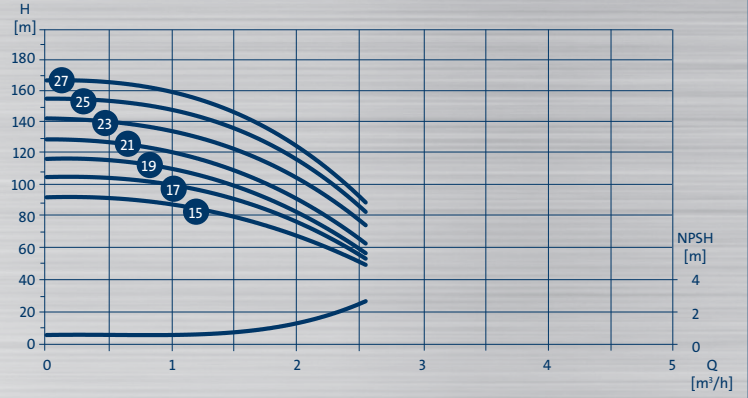
CRI 15 (FGJ Version)

PERFORMANCE

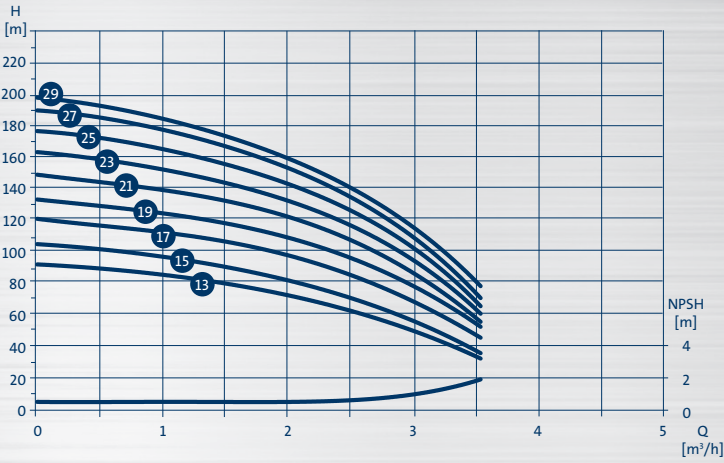
CRI 15



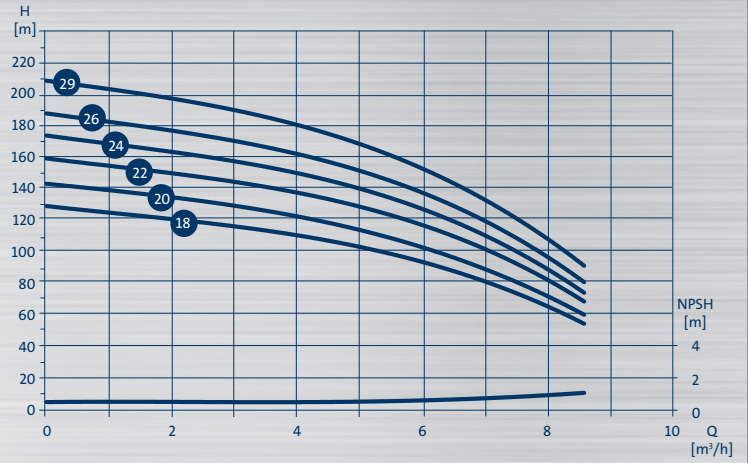
CRI 1



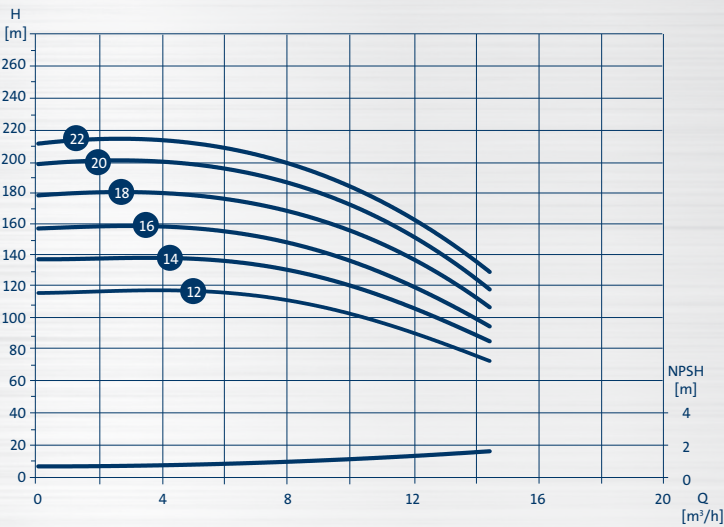
CRI 3



CRI 5



CRI 10



CRI 15

