

CR, CRI, CRN 32-90 Model B

Air-cooled top

Service instructions



Original service instructions.

CONTENTS

	Page
1. Symbols used in this document	2
2. General information	2
3. Torques	3
4. Lubricants	3
5. Service tools	3
6. Instructions for dismantling and assembly	4
7. Exploded view	5



Warning

Prior to service work, read these service instructions carefully. Installation and service work must comply with local regulations and accepted codes of good practice.

Observe the safety instructions in the installation and operating instructions for the product.

1. Symbols used in this document



Warning

If these safety instructions are not observed, it may result in personal injury.



Warning

If these instructions are not observed, it may lead to electric shock with consequent risk of serious personal injury or death.



Caution

If these safety instructions are not observed, it may result in malfunction or damage to the equipment.



Note

Notes or instructions that make the job easier and ensure safe operation.

2. General information

Position numbers of parts (digits) refer to the drawing in section 7. *Exploded view*. Position numbers of tools (letters) refer to section 5. *Service tools*. For parts without position numbers, see the parts list of the standard CR pump in WinCAPS or WebCAPS.



Warning

If there is a risk of getting into contact with the pumped liquid, use personal protective equipment.

Observe local regulations.

Before dismantling



Warning

Before starting work on the product, switch off the power supply. Make sure that the power supply cannot be accidentally switched on.



Warning

Check that other pumps or sources do not force flow through the pump even if the pump is stopped. This will cause the motor to act like a generator, resulting in voltage on the pump.

- Close the isolating valves, if fitted, and make sure that they cannot be accidentally opened.
- Before starting work on the product, let the product and pumped liquid cool off.

Before assembly

- Clean and check all parts.
- Replace defective parts with new parts.
- Always replace gaskets and O-rings.

During assembly

- Tighten screws and nuts according to section 3. *Torques*.
- Lubricate rings and screws according to section 4. *Lubricants*.

After assembly

If analog or digital inputs, the relay output or the CIM module has been removed from the pump, check the communication with external units after service.

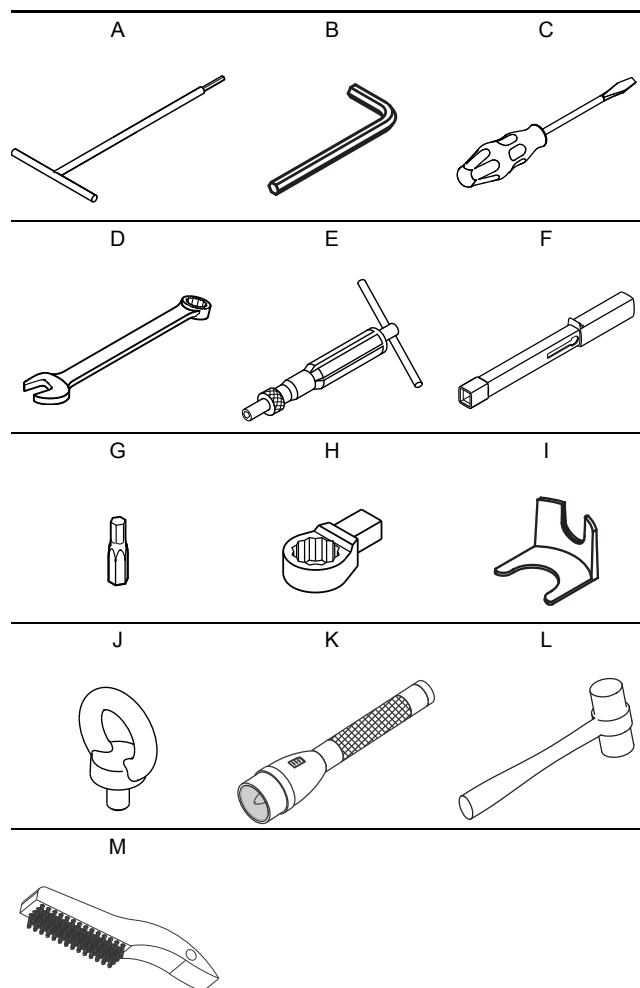
3. Torques

Pos.	Description	Torque
9	Coupling screws	85
7a	Coupling guard screws	6
18, 18b	Air vent screws	35
23, 23a, 23b	Drain plugs	
28	Motor stool screws	62
36	Pump head nuts	100
58a	Seal carrier screws	62
105a	Shaft seal	35
113	Shaft seal set screws	6

4. Lubricants

Pos.	Designation	Product No
9		
28, 28a	THREAD-EZE	00SV9997
58a		
51	Soapy water	-
105a		
37a, 37b		
109	Rocol Sapphire Aqua-Sil	00RM2924
110		
117	Loctite 55 Teflon tape	V70002381

5. Service tools



Pos.	Designation	For pos.	Tool size	Product No
A	Tee screwdriver	113	3	00SV0153
B	Hexagon key	9, 28, 58a	8	
C	Slot screwdriver	7a	1.4	-
D	Ring/open-end spanner	18b, 23a, 23b, 36	24	00SV0122
		28	8	00SV0273
E	Torque screwdriver	113, 7a	1-6 Nm	00SV0438
F	Torque wrench	9, 18b, 23a, 23b, 28, 36, 58a, 58c	20-100 Nm	00SV0269
G	Hexagon bit	9, 28	8	00SV0010
		113	3	-
H	Ring insert tool	18b, 23a, 23b, 36	24	00SV0524
		28	8	00SV0411
I	Adjusting fork	105a	22	985924
J	Eye bolt	28b	-	00ID2779
K	Torch	113	-	-
L	Rubber hammer	2, 2b, 8	-	00SV0349
M	Wire brush for stainless steel	117	-	-

6. Instructions for dismantling and assembly

6.1 Dismantling

1. Remove screws (pos. 7a) and coupling guards (pos. 7).
2. Remove screws (pos. 9) and coupling (pos. 8). It may be necessary to loosen the coupling with a rubber hammer.
3. Attach lifting device to eyebolts (pos. 28b).
4. Remove screws (pos. 28). Lift and remove motor and motor stool (pos. 1a).

Caution To prevent the motor from tipping over, hold it straight when using a lifting device.

5. Slacken nut (pos. 117a) and remove air escape pipe (pos. 117) and air vent (pos. 118).
6. Remove screws (pos. 58a) and retainer (pos. 58).
7. Clean the shaft end.
8. Slacken the socket screws (pos. 113) of the upper shaft seal (pos. 105a).
9. Press shaft seal (pos. 105a) out of the secondary pump head (pos. 2) using two slot screwdrivers, and pull it off the shaft. See fig. 1.

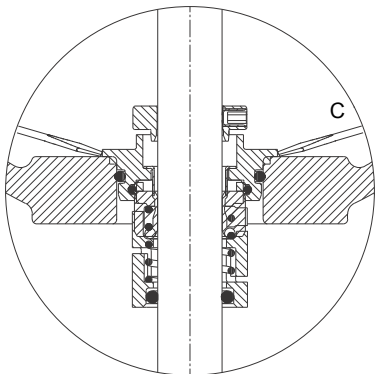


Fig. 1 Removing shaft seal

10. Remove nuts (pos. 36) and washers (pos. 66a).
11. Remove secondary pump head (pos. 2b). It may be necessary to loosen it with a rubber hammer.
12. Remove pump head (pos. 2b). It may be necessary to loosen it with a rubber mallet.
13. Remove chamber separator (pos. 79) from the pump head. It may be necessary to loosen it with a rubber hammer.
14. Remove O-rings (pos. 79a and 79b) from chamber separator.
15. Remove O-ring (pos. 37a) and rubber springs (pos. 60) from pump head.
16. Continue the dismantling according to the instructions for dismantling of the standard CR pump.

6.2 Assembly

1. Fit rubber springs (pos. 60) and O-ring (pos. 37) in pump head (pos. 2b).
2. Fit O-rings (pos. 79a and 79b) on chamber separator (pos. 79).
3. Fit chamber separator in pump head.
4. Fit pump head on outer sleeve (pos. 55).
5. Fit secondary pump head (pos. 2) on pump head.
6. Fit washers (pos. 66a) and cross-tighten nuts (36).
7. Press upper shaft seal (pos. 105a) down the shaft and into the upper pump head.
8. Fit retainer (pos. 58) and cross-tighten screws (58a).
9. Tighten the sockets screws (pos. 113) of the upper shaft seal.

10. Lift pump shaft and insert the adjusting fork between the shaft seal driver and its retainer. See fig. 2.

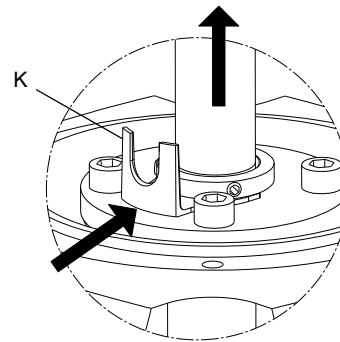


Fig. 2 Fitting adjusting fork

11. Remove old teflon tape from air escape pipe thread (pos. 117).
12. Fit new teflon tape on thread.
13. Fit air vent pipe and air vent (pos. 118) on secondary pump head (pos. 2).
14. Attach lifting device to eyebolts. Lift and fit motor and motor stool on upper pump head (pos. 2).

Caution To prevent the motor from tipping over, hold it straight when using a lifting device.

15. Cross-tighten screws (pos. 28).
16. Fit coupling (pos. 8), according to figs 3 and 4, and tighten screws (pos. 9).

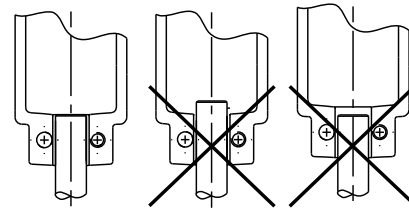


Fig. 3 Fitting coupling

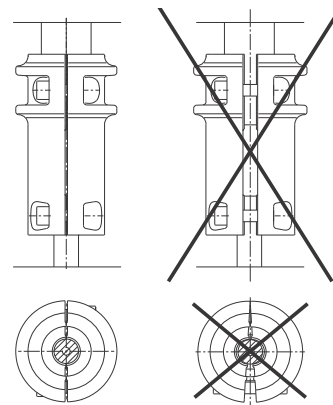


Fig. 4 Adjusting coupling

17. Remove the other adjusting forks, and place it under one of the screws (pos. 58a).
18. Check that the pump shaft can rotate freely.
19. Fit coupling guards (pos. 7) and screws (pos. 7a).

TM06 0071 4813

TM06 0090 4813

TM05 7578 1213

TM03 9607 4207

7. Exploded view

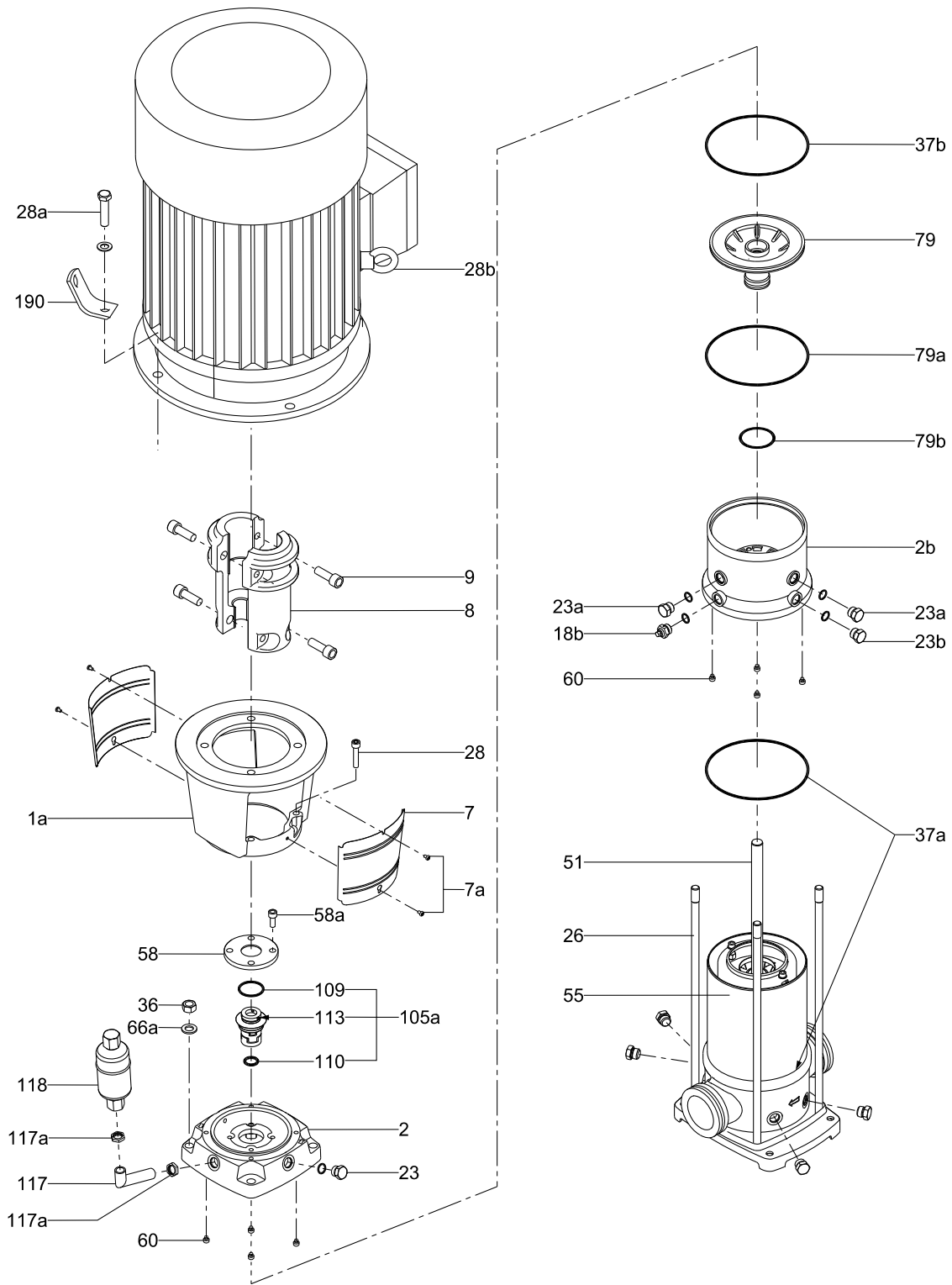


Fig. 5 Exploded view, CR, CRN 32, 45, 64, 90, model B (air-cooled top)

Subject to alterations.

TM05 9664 4313

98642938 0414

ECM: 1133757
