

CONLIFT1 LS

Installation and operating instructions



CONLIFT1 LS
Installation and operating instructions
Other languages
<http://net.grundfos.com/qr/i/98491876>

CONLIFT1 LS

English (GB)

Installation and operating instructions	4
Appendix A	11

English (GB) Installation and operating instructions

Original installation and operating instructions

Table of contents

1. General information	4
1.1 Hazard statements	4
1.2 Notes	5
2. Product introduction	5
2.1 Product description	5
2.2 Intended use	5
2.3 Operating mode	5
2.4 Handling of condensates	6
2.5 Approvals and markings	6
2.6 Accessories	6
3. Receiving the product	6
3.1 Transport	6
4. Installation requirements	6
5. Mechanical installation	6
6. Electrical connection	7
6.1 Cable to condensate source or external alarm	7
7. Starting up the product	8
7.1 Checking the alarm	8
8. Functions	8
9. Service	8
9.1 Maintaining the product	8
9.2 Service	9
9.3 Contaminated products	9
10. Fault finding	9
10.1 The pump does not run	9
10.2 Reduced or no performance	9
10.3 Frequent starts and stops	9
10.4 Alarm	9
11. Technical data	10
12. Disposing of the product	10
13. Document quality feedback	10

1. General information

This appliance shall not be used by children.

Children shall not play with the appliance.

Cleaning and user maintenance shall not be carried out by children.



Appliances can be used by persons with reduced physical, sensory, or mental capabilities, as well as persons with a lack of experience and knowledge. This requires that they are given supervision or instruction concerning the use of the appliance in a safe way and that they understand the hazards involved.



Read this document before you install the product. Installation and operation must comply with local regulations and accepted codes of good practice.

1.1 Hazard statements

The symbols and hazard statements below may appear in Grundfos installation and operating instructions, safety instructions and service instructions.



DANGER

Indicates a hazardous situation which, if not avoided, will result in death or serious personal injury.



WARNING

Indicates a hazardous situation which, if not avoided, could result in death or serious personal injury.



CAUTION

Indicates a hazardous situation which, if not avoided, could result in minor or moderate personal injury.

The hazard statements are structured in the following way:



SIGNAL WORD

Description of the hazard

Consequence of ignoring the warning

- Action to avoid the hazard.

1.2 Notes

The symbols and notes below may appear in Grundfos installation and operating instructions, safety instructions and service instructions.



Observe these instructions for explosion-proof products.



A blue or grey circle with a white graphical symbol indicates that an action must be taken.



A red or grey circle with a diagonal bar, possibly with a black graphical symbol, indicates that an action must not be taken or must be stopped.



If these instructions are not observed, it may result in malfunction or damage to the equipment.



Tips and advice that make the work easier.

2. Product introduction

2.1 Product description

Grundfos CONLIFT1 LS is a small, compact lifting station with a built-in non-return valve.

2.2 Intended use

CONLIFT is designed for the pumping of condensate from the following:

- boilers
- air-conditioning systems
- cooling and refrigeration systems
- air dehumidifiers
- evaporators.

The product is suitable for the pumping of condensate which is collected below sewer level or which cannot flow to the sewage system or drain of the building by means of a natural downward slope.



WARNING

Biological hazard

Death or serious personal injury

- Use the product only to pump condensates.

The product can pump condensates not requiring neutralisation, that is with pH values of 2.5 or higher.

Condensates with pH values up to 2.5 must be neutralised before they leave the CONLIFT lifting station.

Boilers fired with the following fuels normally supply condensate with pH values up to 2.5:

- gas
- liquid gas
- low-sulphur fuel oil according to DIN 51603-1.

Irrespective of the capability of CONLIFT, local regulations may require the installation of a neutralisation unit, even for pH values of 2.5 or higher.

2.3 Operating mode

CONLIFT is designed for maximum 60 starts per hour.

S3 (intermittent operation): 30 % according to DIN EN 0530 T1.

This means that the system is running for 18 seconds and is stopped for 42 seconds.

2.4 Handling of condensates



If CONLIFT is to be connected to a pressure-reducing valve, observe the boiler manufacturer's instructions.



When cleaning heat exchangers and burner units of boiler systems, make sure that no acid and cleaning residuals enter the condensing unit.

Condensates from condensate boilers are very aggressive and will attack the material of the building's sewage system.
In order to protect the sewage system, we recommend that you use a neutralisation unit.
The local outlet regulations regarding condensates from boilers must be met.

Related information
[A.1. Appendix](#)
[11. Technical data](#)

2.5 Approvals and markings
Marking



TM021695

Approvals



TM060463

2.6 Accessories

The following accessories are available from your local Grundfos supplier.

Accessory/ service part	Description	Product number
Extension hose	6 metres of PVC hose with 10 mm internal diameter including one hose coupling.	97936177
Alarm PCB CONLIFT	Printed-circuit board (PCB) enabling additional pump start at alarm level or stop of boiler with acoustic alarm.	97936209

3. Receiving the product

3.1 Transport



WARNING
Crushing hazard
Death or serious personal injury
- Stack maximum two pallets together under transport.

4. Installation requirements



Installation must be carried out by specially trained persons and according to local regulations.

If not already integrated, a water trap (emission trap) must be fitted in all inlets.
CONLIFT is not designed for outdoor use.

5. Mechanical installation

See also the quick guide supplied with CONLIFT.
When installing CONLIFT, observe the following:

- The condensate must run freely into the lifting station.
- The cooling slots in the motor cover must not be covered.
- The lifting station must be easily accessible in order to facilitate maintenance.
- The lifting station must be installed in a well-illuminated and well-ventilated room.

6. Electrical connection

DANGER

Electric shock

Death or serious personal injury



- The protective earth (PE) of the power outlet must be connected to the protective earth of the product. The plug must have the same PE connection system as the power outlet.

DANGER

Electric shock

Death or serious personal injury



- The installation must be fitted with a residual-current device (RCD) with a tripping current less than 30 mA.

DANGER

Electric shock

Death or serious personal injury



- The product must be connected to an external main switch with a minimum contact gap of 3 mm (0.12 inch) in all poles.

DANGER

Electric shock

Death or serious personal injury



- Power cables without a plug must be connected to a supply disconnecting device incorporated in the fixed wiring according to the local wiring rules.
- If the power cable is damaged, it must be replaced by the manufacturer, the manufacturer's service partner or a similarly qualified person.



Electrical connection must be carried out by an authorised electrician.

Carry out the electrical connection according to local regulations.

Check that the supply voltage and frequency correspond to the values stated on the nameplate.

The power cable has a Schuko plug or a free cable end. The cable has a length of 2 metres.



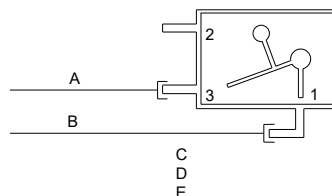
The electrical connection of a cable with a free cable end must be carried out by an authorised electrician.

6.1 Cable to condensate source or external alarm

CONLIFT has a safety overflow switch which can be connected to the condensate source or to an external alarm system. The switch is connected to an alarm cable with free cable end.

Alarm systems with a control voltage of 250 VAC, 2.5 A, can be used.

On delivery, the alarm cable is connected to terminals COM1 (brown) and NC2 (blue) of the safety overflow switch.



Wiring diagram

Pos.	Description
A	Blue
B	Brown
C	1 = COM1
D	2 = NO4
E	3 = NC2

The alarm cable can be connected in two ways, depending on application:

• Shutdown of condensate source

The safety overflow switch can be connected to a Class-II low-voltage circuit. To enable shutdown of the condensate source, the COM1 and NC2 terminals of the safety overflow switch must be connected in series with the low-voltage thermostat circuit of the condensate source.

• External alarm system

The COM1 and NO4 terminals can be used to close a low-voltage alarm circuit. To activate an alarm, the COM1 and NO4 terminals of the safety overflow switch must be connected in series with the low-voltage alarm circuit.

TM051152_2211

7. Starting up the product



Start up CONLIFT in accordance with local regulations and accepted codes of good practice.

1. Check that all hoses and connections are tight.
2. Connect the power supply.

7.1 Checking the alarm

1. To ensure that the alarm level is reached, squeeze the outlet hose or close the isolating valve, if fitted, and fill water into the tank. The pump will be started via the float switch.
2. Continue filling water into the tank until the safety overflow switch is activated. If no external alarm is connected to CONLIFT, this function can be checked by means of a multimeter.



The safety overflow switch must be activated before the water starts running out of CONLIFT.

3. Stop filling water into the tank and stop squeezing the outlet hose. The alarm stops (the switch opens). The pump continues operating. When the stop level is reached, the pump stops.

After checking the alarm, push the inlet hose into the lifting station and let the condensate from the boiler or air-conditioning system run into the tank again.

8. Functions

The condensate runs by natural fall through a hose into the tank.

The liquid level in the tank is controlled automatically by a float switch. A micro switch in the float switch will start the pump when the liquid level reaches the start level, and it will stop the pump again when the liquid level has fallen to the stop level. The condensate is pumped through the outlet hose to the drain.

CONLIFT also has a safety overflow switch with a 1.7-metre electric cable. This overflow switch can be connected to the condensate boiler and set to stop the boiler in case of an alarm.

CONLIFT has a thermal switch which stops the motor in case of overload. When the motor has cooled to normal temperature, it restarts automatically.

Related information

[9. Service](#)

9. Service

Always use original accessories from Grundfos to ensure safe and reliable operation.

WARNING

Electric shock

Death or serious personal injury



- Switch off the power supply before you start any work on the product. Make sure that the power supply cannot be switched on accidentally.



Maintenance and service must be carried out by specially trained persons and according to local regulations.

9.1 Maintaining the product



If the power cable is damaged, it must be replaced by the manufacturer, the manufacturer's service partner or similarly qualified person.

CONLIFT does not require any special maintenance, but we recommend that you check operation and pipe connections at least once a year and that you clean the collecting tank, if necessary.

9.2 Service

Thanks to the CONLIFT design, service can easily be performed in case of malfunction or blocked pump.



Electrical connection must be carried out by an authorized electrician.

WARNING

Electric shock

Death or serious personal injury



- Switch off the power supply before you start any work on the product. Make sure that the power supply cannot be switched on accidentally.

9.2.1 Servicing the product

See illustrations in the appendix.

Make the following checks and clean the collecting tank, if necessary:

1. Disconnect the power supply.
2. Cut off the flow of condensate from the boiler or other application, or stop the flow of condensate to CONLIFT.
3. Make sure that the hoses are not mechanically or chemically damaged.
4. Remove the outlet hose by turning the bayonet coupling, and check the O-ring. The condensate in the hose will not run out due to the non-return valve.
5. If the condensate is running out of the hose, check and clean the non-return valve.
6. Press the side-locking catches and lift off the motor support. Place it in upright position.
7. Remove deposits, dirt, algae and incrustations under running water.

9.3 Contaminated products



CAUTION

Biological hazard

Minor or moderate personal injury

- Flush the product thoroughly with clean water and rinse the parts in water after dismantling.

The product will be classified as contaminated if it has been used for a liquid which is injurious to health or toxic. If you request Grundfos to service the product, contact Grundfos with details about the pumped liquid before returning the product for service. Otherwise, Grundfos can refuse to accept the product for service. Any application for service must include details about the pumped liquid.

Clean the product in the best possible way before you return it. Costs of returning the product are to be paid by the customer.

10. Fault finding

DANGER

Electric shock

Death or serious personal injury



- Switch off the power supply before you start any work on the product. Make sure that the power supply cannot be switched on accidentally.

10.1 The pump does not run

Cause	Remedy
No power supply.	<ul style="list-style-type: none"> • Connect the power supply.
A fuse is blown.	<ul style="list-style-type: none"> • Replace the fuse (1 A slow-blow fuse).
The power cable is damaged.	<ul style="list-style-type: none"> • Repair or replace the cable. This must only be carried out by an authorised service workshop or by Grundfos.
The thermal overload switch has tripped:	<ul style="list-style-type: none"> • The motor is not sufficiently cooled. Clean the cooling slots in the motor cover. • Deposits in the pump. Clean the impeller, pump housing and the entire lifting station.

10.2 Reduced or no performance

Cause	Remedy
The outlet hose is squeezed or broken.	<ul style="list-style-type: none"> • Straighten the outlet hose or replace it. The bending radius of the hose must be at least 60 mm.
The non-return valve does not open.	<ul style="list-style-type: none"> • Remove the outlet connection, and clean the non-return valve.
The motor fan cannot be turned freely.	<ul style="list-style-type: none"> • Clean the pump housing and the impeller.

10.3 Frequent starts and stops

Cause	Remedy
The non-return valve does not close.	<ul style="list-style-type: none"> • Remove the outlet connection, and clean the non-return valve.
The inlet quantity is too high.	<ul style="list-style-type: none"> • Make sure the inlet quantity is correct.

10.4 Alarm

Cause	Remedy
The condensate is not pumped out of the tank.	<ul style="list-style-type: none"> • Refer to steps 10.1 and 10.2.

Related information

[10.1 The pump does not run](#)

[10.2 Reduced or no performance](#)

11. Technical data

Supply voltage	1 × 230 VAC -6 % /+6 %, 50 Hz, PE
Input power	P1 = 70 W
Input current	I = 0.65 A.
Alarm connection	An external alarm can be connected via the safety overflow switch. The cable can stand a control voltage of 250 VAC, 2.5 A.
Cable lengths	Power cable: 2.0 m Alarm cable: 1.7 m
Storage temperature	Store in a dry room. Empty tank: -10 °C to +50 °C Tank with condensate: above 0 °C (risk of frost not allowed)
Ambient temperature	During operation: 5-35 °C
Liquid temperature	Average temperature: 50 °C
Max. head	5.5 m
Max. flow rate	600 l/h
pH value of condensate	2.5 or higher
Density of condensate	Max. 1000 kg/m ³
Motor protection	Thermal overload switch: 120 °C Insulation class: F
Enclosure class	IP20
Weight	3.8 kg
Volume	<ul style="list-style-type: none"> • Tank volume: 2.65 l • Useful volume: 0.9 l • Alarm condition: 2.1 l • Operating condition: 1.7 l

12. Disposing of the product

This product or parts of it must be disposed of in an environmentally sound way.

1. Use the public or private waste collection service.
2. If this is not possible, contact the nearest Grundfos company or service workshop.



The crossed-out wheeled bin symbol on a product means that it must be disposed of separately from household waste. When a product marked with this symbol reaches its end of life, take it to a collection point designated by the local waste disposal authorities. The separate collection and recycling of such products will help protect the environment and human health.

See also end-of-life information at www.grundfos.com/product-recycling.

13. Document quality feedback

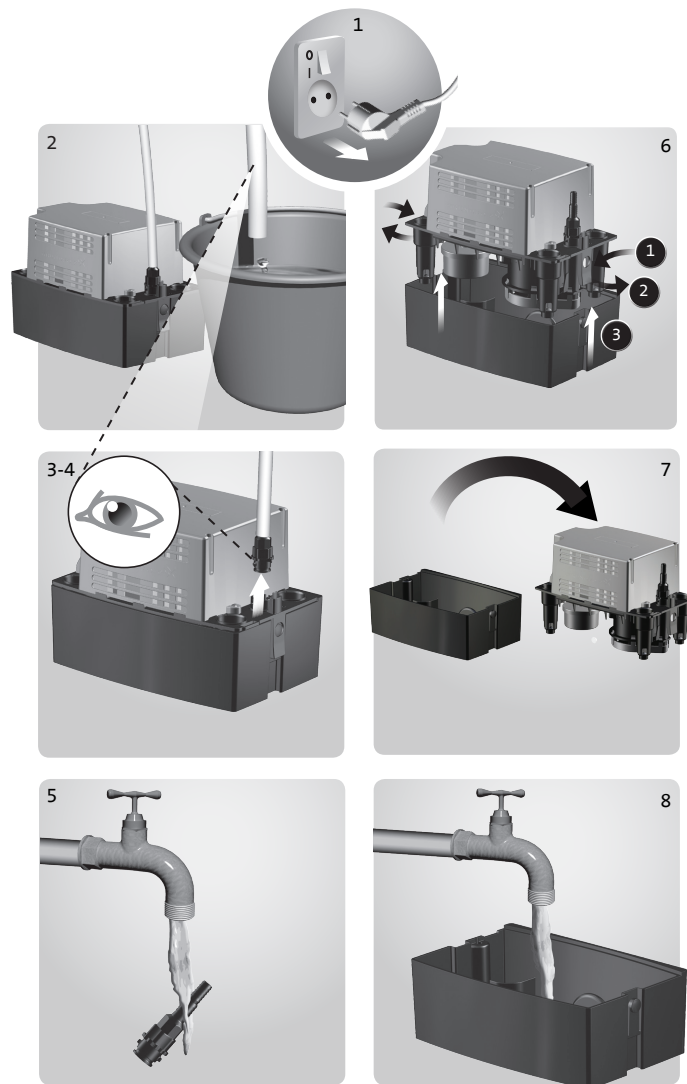
To provide feedback about this document, scan the QR code using your phone's camera or a QR code app.



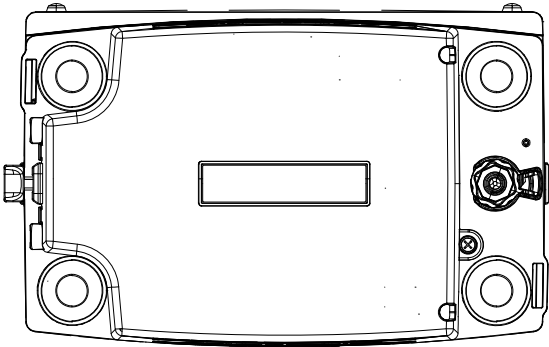
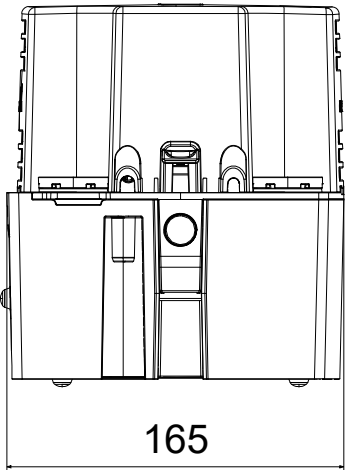
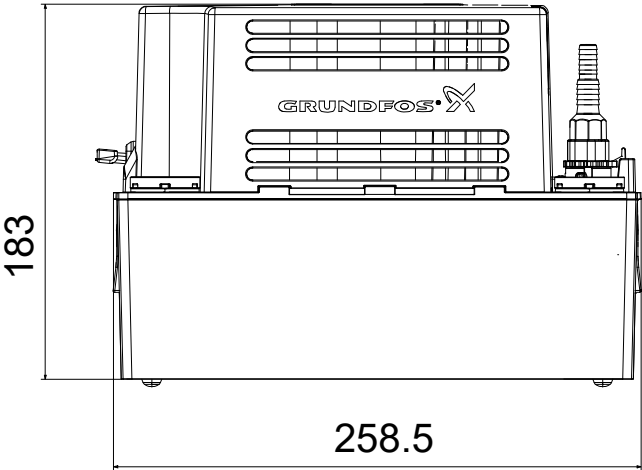
[Click here to submit your feedback](#)

A.1. Appendix

CONLIFT1 LS



Dimensions, Conlift1 LS



TM051227

Argentina

Bombas GRUNDFOS de Argentina S.A.
Ruta Panamericana km. 37.500 Industrias
1619 - Garín Pcia. de B.A.
Tel.: +54-3327 414 444
Fax: +54-3327 45 3190

Australia

GRUNDFOS Pumps Pty. Ltd.
P.O. Box 2040
Regency Park
South Australia 5942
Tel.: +61-8-8461-4611
Fax: +61-8-8340-0155

Austria

GRUNDFOS Pumpen Vertrieb Ges.m.b.H.
Grundfosstraße 2
A-5082 Grödig/Salzburg
Tel.: +43-6246-883-0
Fax: +43-6246-883-30

Belgium

N.V. GRUNDFOS Bellux S.A.
Boomsesteenweg 81-83
B-2630 Aartselaar
Tel.: +32-3-870 7300
Fax: +32-3-870 7301

Bosnia and Herzegovina

GRUNDFOS Sarajevo
Zmaja od Bosne 7-7A
BiH-71000 Sarajevo
Tel.: +387 33 592 480
Fax: +387 33 590 465
www.ba.grundfos.com
E-mail: grundfos@bih.net.ba

Brazil

BOMBAS GRUNDFOS DO BRASIL
Av. Humberto de Alencar Castelo Branco,
630
CEP 09850 - 300
São Bernardo do Campo - SP
Tel.: +55-11 4393 5533
Fax: +55-11 4343 5015

Bulgaria

Grundfos Bulgaria EOOD
Slatina District
Iztocna Tangenta street no. 100
BG - 1592 Sofia
Tel.: +359 2 49 22 200
Fax: +359 2 49 22 201
E-mail: bulgaria@grundfos.bg

Canada

GRUNDFOS Canada inc.
2941 Brighton Road
Oakville, Ontario
L6H 6C9
Tel.: +1-905 829 9533
Fax: +1-905 829 9512

China

GRUNDFOS Pumps (Shanghai) Co. Ltd.
10F The Hub, No. 33 Suhong Road
Minhang District
Shanghai 201106 PRC
Tel.: +86 21 612 252 22
Fax: +86 21 612 253 33

Colombia

GRUNDFOS Colombia S.A.S.
Km 1.5 vía Siberia-Cota Conj. Potrero
Chico,
Parque Empresarial Arcos de Cota Bod. 1A.
Cota, Cundinamarca
Tel.: +57(1)-2913444
Fax: +57(1)-8764586

Croatia

GRUNDFOS CROATIA d.o.o.
Buzinski prilaz 38, Buzin
HR-10010 Zagreb
Tel.: +385 1 6595 400
Fax: +385 1 6595 499
www.hr.grundfos.com

Czech Republic

GRUNDFOS Sales Czechia and Slovakia
s.r.o.
Čajkovského 21
779 00 Olomouc
Tel.: +420-585-716 111

Denmark

GRUNDFOS DK A/S
Martin Bachs Vej 3
DK-8850 Bjerringbro
Tel.: +45-87 50 50 50
Fax: +45-87 50 51 51
E-mail: info_GDK@grundfos.com
www.grundfos.com/DK

Estonia

GRUNDFOS Pumps Eesti OÜ
Peterburi tee 92G
11415 Tallinn
Tel.: + 372 606 1690
Fax: + 372 606 1691

Finland

OY GRUNDFOS Pumput AB
Trukkikuja 1
FI-01360 Vantaa
Tel.: +358-(0) 207 889 500

France

Pompes GRUNDFOS Distribution S.A.
Parc d'Activités de Chesnes
57, rue de Malacombe
F-38290 St. Quentin Fallavier (Lyon)
Tel.: +33-4 74 82 15 15
Fax: +33-4 74 94 10 51

Germany

GRUNDFOS GMBH
Schlüterstr. 33
40699 Erkrath
Tel.: +49-(0) 211 929 69-0
Fax: +49-(0) 211 929 69-3799
E-mail: infoservice@grundfos.de
Service in Deutschland:
kundendienst@grundfos.de

Greece

GRUNDFOS Hellas A.E.B.E.
20th km. Athinon-Markopoulou Av.
P.O. Box 71
GR-19002 Peania
Tel.: +0030-210-66 83 400
Fax: +0030-210-66 46 273

Hong Kong

GRUNDFOS Pumps (Hong Kong) Ltd.
Unit 1, Ground floor, Siu Wai industrial
Centre
29-33 Wing Hong Street & 68 King Lam
Street, Cheung Sha Wan
Kowloon
Tel.: +852-27861706 / 27861741
Fax: +852-27858664

Hungary

GRUNDFOS South East Europe Kft.
Tópark u. 8
H-2045 Törökbálint
Tel.: +36-23 511 110
Fax: +36-23 511 111

India

GRUNDFOS Pumps India Private Limited
118 Old Mahabalipuram Road
Thoraiakkam
Chennai 600 097
Tel.: +91-44 2496 6800

Indonesia

PT GRUNDFOS Pompa
Graha intirub Lt. 2 & 3
Jln. Cililitan Besar No.454. Makasar,
Jakarta Timur
ID-Jakarta 13650
Tel.: +62 21-469-51900
Fax: +62 21-460 6910 / 460 6901

Ireland

GRUNDFOS (Ireland) Ltd.
Unit A, Merrywell Business Park
Ballymount Road Lower
Dublin 12
Tel.: +353-1-4089 800
Fax: +353-1-4089 830

Italy

GRUNDFOS Pompe Italia S.r.l.
Via Gran Sasso 4
I-20060 Truccazzano (Milano)
Tel.: +39-02-95838112
Fax: +39-02-95309290 / 95838461

Japan

GRUNDFOS Pumps K.K.
1-2-3, Shin-Miyakoda, Kita-ku
Hamamatsu
431-2103 Japan
Tel.: +81 53 428 4760
Fax: +81 53 428 5005

Kazakhstan

Grundfos Kazakhstan LLP
7' Kyz-Zhibek Str., Kok-Tobe micr.
KZ-050020 Almaty Kazakhstan
Tel.: +7 (727) 227-98-55/56

Korea

GRUNDFOS Pumps Korea Ltd.
6th Floor, Aju Building 679-5
Yeoksam-dong, Kangnam-ku, 135-916
Seoul, Korea
Tel.: +82-2-5317 600
Fax: +82-2-5633 725

Latvia

SIA GRUNDFOS Pumps Latvia
Deglava biznesa centrs
Augusta Deglava ielā 60
LV-1035, Rīga,
Tel.: + 371 714 9640, 7 149 641
Fax: + 371 914 9646

Lithuania

GRUNDFOS Pumps UAB
Smolensko g. 6
LT-03201 Vilnius
Tel.: + 370 52 395 430
Fax: + 370 52 395 431

Malaysia

GRUNDFOS Pumps Sdn. Bhd.
7 Jalan Peguam U1/25
Glenmarie industrial Park
40150 Shah Alam, Selangor
Tel.: +60-3-5569 2922
Fax: +60-3-5569 2866

Mexico

Bombas GRUNDFOS de México
S.A. de C.V.
Boulevard TLC No. 15
Parque industrial Stiva Aeropuerto
Apodaca, N.L. 66600
Tel.: +52-81-8144 4000
Fax: +52-81-8144 4010

Netherlands

GRUNDFOS Netherlands
Veluwezoom 35
1326 AE Almere
Postbus 22015
1302 CA ALMERE
Tel.: +31-88-478 6336
Fax: +31-88-478 6332
E-mail: info_gnl@grundfos.com

New Zealand

GRUNDFOS Pumps NZ Ltd.
17 Beatrice Tinsley Crescent
North Harbour Industrial Estate
Albany, Auckland
Tel.: +64-9-415 3240
Fax: +64-9-415 3250

Norway

GRUNDFOS Pumper A/S
Strømsveien 344
Postboks 235, Leirdal
N-1011 Oslo
Tel.: +47-22 90 47 00
Fax: +47-22 32 21 50

Poland

GRUNDFOS Pompy Sp. z o.o.
ul. Klonowa 23
Baranowo k. Poznania
PL-62-081 Przeźmierowo
Tel.: (+48-61) 650 13 00
Fax: (+48-61) 650 13 50

Portugal

Bombas GRUNDFOS Portugal, S.A.
Rua Calvet de Magalhães, 241
Apartado 1079
P-2770-153 Paço de Arcos
Tel.: +351-21-440 76 00
Fax: +351-21-440 76 90

Romania

GRUNDFOS Pompe România SRL
S-PARK BUSINESS CENTER, Clădirea
A2, etaj 2
Str. Tipografilor, Nr. 11-15, Sector 1, Cod
013714
Bucuresti, Romania
Tel.: 004 021 2004 100
E-mail: romanian@grundfos.ro

Serbia

Grundfos Srbija d.o.o.
Omladinskih brigada 90b
11070 Novi Beograd
Tel.: +381 11 2258 740
Fax: +381 11 2281 769
www.rs.grundfos.com

Singapore

GRUNDFOS (Singapore) Pte. Ltd.
25 Jalan Tukang
Singapore 619264
Tel.: +65-6681 9688
Fax: +65-6681 9689

Slovakia

GRUNDFOS s.r.o.
Prievozská 4D 821 09 BRATISLAVA
Tel.: +421 2 5020 1426
sk.grundfos.com

Slovenia

GRUNDFOS LJUBLJANA, d.o.o.
Leskoškova 9e, 1122 Ljubljana
Tel.: +386 (0) 1 568 06 10
Fax: +386 (0) 1 568 06 19
E-mail: tehnika-si@grundfos.com

South Africa

GRUNDFOS (PTY) LTD
16 Lascelles Drive, Meadowbrook Estate
1609 Germiston, Johannesburg
Tel.: (+27) 10 248 6000
Fax: (+27) 10 248 6002
E-mail: lgradidge@grundfos.com

Spain

Bombas GRUNDFOS España S.A.
Camino de la Fuenteçilla, s/n
E-28110 Algete (Madrid)
Tel.: +34-91-848 8800
Fax: +34-91-628 0465

Sweden

GRUNDFOS AB
Box 333 (Lunnagårdsgatan 6)
431 24 Mölndal
Tel.: +46 31 332 23 000
Fax: +46 31 331 94 60

Switzerland

GRUNDFOS Pumpen AG
Bruggacherstrasse 10
CH-8117 Fällanden/ZH
Tel.: +41-44-806 8111
Fax: +41-44-806 8115

Taiwan

GRUNDFOS Pumps (Taiwan) Ltd.
7 Floor, 219 Min-Chuan Road
Taichung, Taiwan, R.O.C.
Tel.: +886-4-2305 0868
Fax: +886-4-2305 0878

Thailand

GRUNDFOS (Thailand) Ltd.
92 Chaloe Phrakiat Rama 9 Road
Dokmai, Pravej, Bangkok 10250
Tel.: +66-2-725 8999
Fax: +66-2-725 8998

Turkey

GRUNDFOS POMPA San. ve Tic. Ltd. Sti.
Gebze Organize Sanayi Bölgesi
İhsan dede Caddesi
2. yol 200. Sokak No. 204
41490 Gebze/ Kocaeli
Tel.: +90 - 262-679 7979
Fax: +90 - 262-679 7905
E-mail: satis@grundfos.com

Ukraine

ТОВ "ГРУНДФОС УКРАЇНА"
Бізнес Центр Європа
Столичне шосе, 103
м. Київ, 03131, Україна
Tel.: (+38 044) 237 04 00
Fax: (+38 044) 237 04 01
E-mail: ukraine@grundfos.com

United Arab Emirates

GRUNDFOS Gulf Distribution
P.O. Box 16768
Jebel Ali Free Zone, Dubai
Tel.: +971 4 8815 166
Fax: +971 4 8815 136

United Kingdom

GRUNDFOS Pumps Ltd.
Grovebury Road
Leighton Buzzard/Beds. LU7 4TL
Tel.: +44-1525-850000
Fax: +44-1525-850011

U.S.A.

Global Headquarters for WU
856 Koomery Road
Brookshire, Texas 77423 USA
Phone: +1-630-236-5500

Uzbekistan

Grundfos Tashkent, Uzbekistan
The Representative Office of Grundfos
Kazakhstan in Uzbekistan
38a, Oybek street, Tashkent
Tel.: (+998) 71 150 3290 / 71 150 3291
Fax: (+998) 71 150 3292

98491876 02.2025
ECM: 1414902

Trademarks displayed in this material, including but not limited to Grundfos and the Grundfos logo, are registered trademarks owned by The Grundfos Group. © 2025 Grundfos Holding A/S, all rights reserved.