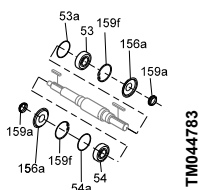


62. NKX

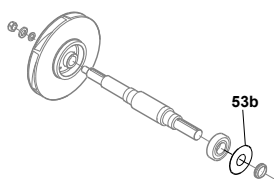
50/60 Hz

Bearings, spacer ring and V-ring



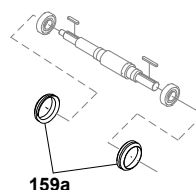
Content of bearing kit:

- 53/54:2 x bearing
- 53a/54a:2 x O-ring
- 156a:2 x bearing cover
- 159f:2 x retaining ring
- 159a:2 x V-ring



Content of spacer ring kit:

- 53b:1 x spacer ring



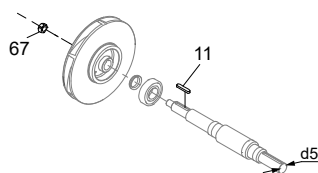
Content of V-ring kit:

- 159a:2 x V-ring

Pump type	Pump shaft diameter d5	Bearings	Spacer ring ²⁰⁶⁾	V-ring
65 - 315	200	96579599	96938909	96591314
	250	96579599	96938909	96591314
	315	96579599	96938909	96591314
80 - 400	200	95919874	96938910	96871239
	250	96579599	96938909	96591314
100 - 250	315	96579599	96938909	96591314
	250	96579599	96938909	96591314
	315	96579599	96938909	96591314
125 - 400	250	95919874	96938910	96871239
	315	95919874	96938910	96871239
150 - 200	250	95919874	96938910	96871239
	315	95919874	96938910	96871239
	400	95919874	96938910	96871239

²⁰ Only to be used together with GQQE shaft seals.
⁶⁾

Nut, washer and key for impeller



- 11 1 x key
- 67:1 x nut
- 66a:1 x lock washer
- 66:1 x washer

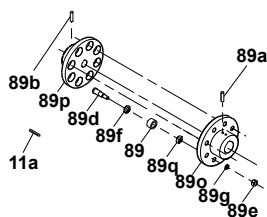
Pump type	Pump shaft diameter d5	
65 - 315	200	96939130
	250	96939130
	315	96939130
80 - 400	200	96939132
	250	96939134
100 - 400	315	96939134
	250	96939134
	315	96939132
125 - 400	250	96939132
	315	96939132
150 - 400	250	96939132
	315	96939132

Shaft seal

Pos.	Description	
105	Shaft seal	1
72a	O-ring	1

Pump type	Shaft diameter	BAQE	BQQE	GQQE
65 - 315	38	96537605	96537607	96537606
	200	96537605	96537607	96537606
80 -	250	96537605	96537607	96537606
	315	96537605	96537607	96537606
	400	96306472	96306473	96306474
100 -	200	96537605	96537607	96537606
	250	96537605	96537607	96537606
	315	96537605	96537607	96537606
	400	96306472	96306473	96306474
125 -	250	96537605	96537607	96537606
	315	96306472	96306473	96306474
	400	96306472	96306473	96306474
150 -	250	96306472	96306473	96306474
	315	96306472	96306473	96306474
	400	96306472	96306473	96306474

Coupling and coupling rubber



TMD44767

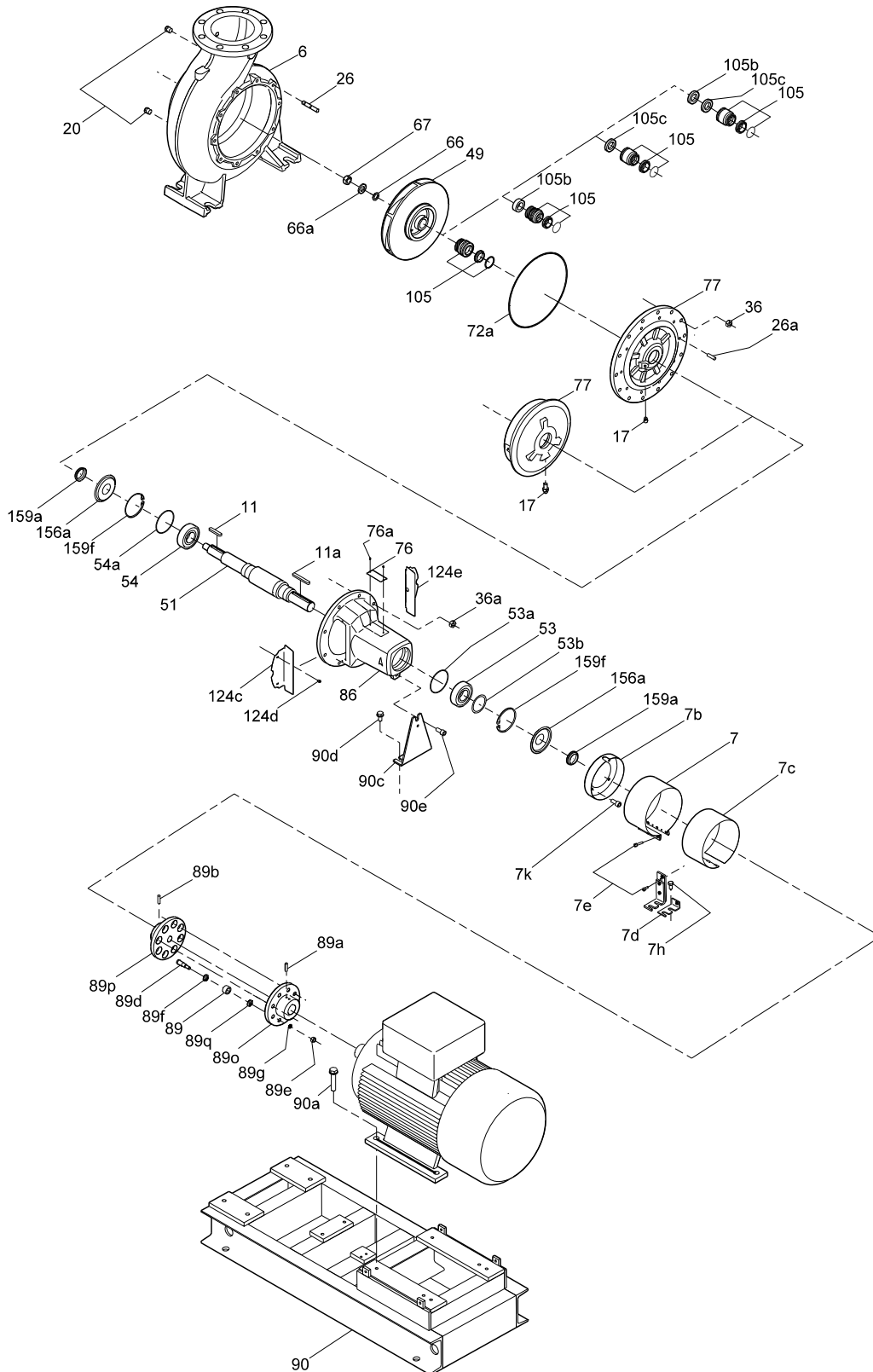
Grundfos standard coupling

Content of kit:

Coupling complete	Rubber	Bolts
89o:1 x male part		89d:1 set of bolts
89p:1 x female part		89f:1 x washer
89d:1 set of bolts/rubber parts	89:1 set of rubber parts	89q:1 x washer
89a:1 x hexagon screw		89g:1 x lock washer
89b:1 x hexagon screw		89e:1 x nut
11a:1 x key		89:1 x rubber parts

Pump type	Motor data					Shaft diameter		Grundfos standard coupling			
	Pole	Power [kW]		Frame size	Make	Pump	Motor	Coupling diameter	Kit No, coupling complete	Kit No, rubber	Kit No, bolts
		50 Hz	60 Hz			[mm]	[mm]				
65 - 315	4	-	11	160M	All	32	42	180	96848906	96789247	96809941
	4	-	15	160L	All	32	42	180	96848906	96789247	96809941
	4	-	18.5	180M	All	32	48	200	96848907	96789269	96809942
	4	-	22	180L	All	32	48	200	96848907	96789269	96809942
80 - 200	4	-	11	160M	All	32	42	180	96848906	96789247	96809941
80 - 250	4	7.5	7.5	132M	All	32	38	160	96848905	96789247	96809941
	4	11	11	160M	All	32	42	180	96848906	96789247	96809941
	4	-	15	160L	All	32	42	180	96848906	96789247	96809941
	4	-	18.5	180M	All	32	48	200	96848907	96789269	96809942
80 - 315	4	11	-	160M	All	32	42	180	96848906	96789247	96809941
	4	15	-	160L	All	32	42	180	96848906	96789247	96809941
	4	18.5	18.5	180M	All	32	48	200	96848907	96789269	96809942
	4	22	22	180L	All	32	48	200	96848907	96789269	96809942
	4	-	30	200L	All	32	55	200	96848908	96789269	96809942
	4	-	37	225S	All	32	60	224	96848909	96789269	96809942
	4	-	45	225M	All	32	60	224	96848909	96789269	96809942
	4	-	-	-	-	-	-	-	-	-	-
80 - 400	4	18.5	-	180M	All	42	48	200	96848916	96789269	96809942
	4	22	-	180L	All	42	48	200	96848916	96789269	96809942
	4	30	-	200L	All	42	55	200	96848917	96789269	96809942
100 - 200	4	-	15	160L	All	32	42	180	96848906	96789247	96809941
	4	-	18.5	180M	All	32	48	200	96848907	96789269	96809942
100 - 250	4	7.5	-	132M	All	32	38	160	96848905	96789247	96809941
	4	11	-	160M	All	32	42	180	96848906	96789247	96809941
	4	15	-	160L	All	32	42	180	96848906	96789247	96809941
	4	18.5	18.5	180M	All	32	48	200	96848907	96789269	96809942
	4	-	22	180L	All	32	48	200	96848907	96789269	96809942
	4	-	30	200L	All	32	55	200	96848908	96789269	96809942
100 - 315	4	15	-	160L	All	32	42	180	96848906	96789247	96809941
	4	18.5	-	180M	All	32	48	200	96848907	96789269	96809942
	4	22	22	180L	All	32	48	200	96848907	96789269	96809942
	4	30	30	200L	All	32	55	200	96848908	96789269	96809942
	4	-	37	225S	All	32	60	224	96848909	96789269	96809942
	4	-	45	225M	All	32	60	224	96848909	96789269	96809942

Pump type	Motor data					Shaft diameter		Grundfos standard coupling			
	Pole	Power [kW]		Frame size	Make	Pump	Motor	Coupling diameter	Kit No, coupling complete	Kit No, rubber	Kit No, bolts
		50 Hz	60 Hz			[mm]	[mm]				
100 - 400	4	22	-	180L	All	42	48	200	96848916	96789269	96809942
	4	30	-	200L	All	42	55	200	96848917	96789269	96809942
	4	37	-	225S	All	42	60	224	96848918	96789269	96809942
125 - 250	4	-	22	180L	MMG-AC, EFF2	32	48	200	96848907	96789269	96809942
	4	-	30	200L	MMG-AC, EFF2	32	55	200	96848908	96789269	96809942
	4	-	37	225S	MMG-AC, EFF2	32	60	224	96848909	96789269	96809942
	4	-	45	225M	MMG-AC, EFF2	32	60	224	96848909	96789269	96809942
125 - 315	4	18.5	-	180M	MMG-AC, EFF2	42	48	200	96848916	96789269	96809942
	4	22	-	180L	MMG-AC, EFF2	42	48	200	96848916	96789269	96809942
	4	30	30	200L	MMG-AC, EFF2	42	55	200	96848917	96789269	96809942
	4	37	37	225S	MMG-AC, EFF2	42	60	224	96848918	96789269	96809942
	4	45	45	225M	MMG-AC, EFF2	42	60	224	96848918	96789269	96809942
	4	-	55	250SC	MMG-AC, EFF2	42	70	250	96848920	96789274	96809943
	4	-	75	250MC	MMG-AC, EFF2	42	70	250	96848920	96789274	96809943
125 - 400	4	37	-	225S	MMG-AC, EFF2	42	60	224	96848918	96789269	96809942
	4	45	-	225M	MMG-AC, EFF2	42	60	224	96848918	96789269	96809942
	4	55	-	250SC	MMG-AC, EFF2	42	70	250	96848920	96789274	96809943
150 - 250	4	-	37	225S	MMG-AC, EFF2	42	60	224	96848918	96789269	96809942
	4	-	45	225M	MMG-AC, EFF2	42	60	224	96848918	96789269	96809942
	4	-	55	250SC	MMG-AC, EFF2	42	70	250	96848920	96789274	96809943
	4	-	75	250MC	MMG-AC, EFF2	42	70	250	96848920	96789274	96809943
150 - 315	4	37	-	225S	MMG-AC, EFF2	42	60	224	96848918	96789269	96809942
	4	45	-	225M	MMG-AC, EFF2	42	60	224	96848918	96789269	96809942
	4	55	55	250SC	MMG-AC, EFF2	42	70	250	96848920	96789274	96809943
	4	75	75	250MC	MMG-AC, EFF2	42	70	250	96848920	96789274	96809943
	4	-	90	280S	MMG-AC, EFF2	42	80	250	96848922	96789274	96809943
	4	-	110	280M	MMG-AC, EFF2	42	80	250	96848922	96789274	96809943
150 - 400	4	55	-	250SC	MMG-AC, EFF2	42	70	250	96848920	96789274	96809943
	4	75	-	250MC	MMG-AC, EFF2	42	70	250	96848920	96789274	96809943
	4	90	-	280S	MMG-AC, EFF2	42	80	250	96848922	96789274	96809943
	4		132	315S	MMG-AC, EFF2	42	85	250	96848923	96789274	96809943



TM045730