

08/7,/,)7

)LUVW JHQHUDWLRQ XQWLO -XQH

0

+]

/& FRQWUROOHU 5HSODFHPHQW NLW IRU /&

3 1 08/7,/,)7	08/7,/,)7	2OG /&	1HZ /&	'HVFULSWLRQ	
0	; 9			.LW /&	ZLWK VHQVRU SLSH DQG P SUHVXX
0	; 9			.LW /&	ZLWK VHQVRU SLSH DQG P SUHVXX
0	; 9			.LW /&	0Z&WK VHQVRU SLSH DQG P SUHVXX
0	; 9			.LW /&	0Z&WK VHQVRU SLSH DQG P SUHVXX
0	; 9			.LW /&	0Z&WK VHQVRU SLSH DQG P SUHVXX
0	; 9			.LW /&	0Z&WK VHQVRU SLSH DQG P SUHVXX
0	; 9			.LW /&	0Z&WK VHQVRU SLSH DQG P SUHVXX
0	; 9			.LW /&	0Z&WK VHQVRU SLSH DQG P SUHVXX
0	; 9			.LW /&	0Z&WK VHQVRU SLSH DQG P SUHVXX
0	; 9			.LW /&	0Z&WK VHQVRU SLSH DQG P SUHVXX
0	; 9			.LW /&	0Z&WK VHQVRU SLSH DQG P SUHVXX
0	; 9			.LW /&	0Z&WK VHQVRU SLSH DQG P SUHVXX
0	; 9			.LW /&	0Z&WK VHQVRU SLSH DQG P SUHVXX
0	; 9			.LW /&	0Z&WK VHQVRU SLSH DQG P SUHVXX

&DSDFLWRU

.LW 1R
'HVFULSWLRQ))
&DSDFLWRU

&8 FRQWURO XQLW

.LW 1R
'HVFULSWLRQ 9 9 9
SKDVH SKDVH SKDVH
&RQWURO XQLW

)ODQJH

3RV .LW 1R
'LVFKDUJH IODQJH

ORWRU NLWV FRPSOHWH

3 1	'HVFULSWLRQ	
.,7	02725 0	; 9
.,7	02725 0	; 9
.,7	02725 0	; 9
.,7	02725 0	; 9
.,7	02725 0	; 9
.,7	02725 0	; 9
.,7	02725 0	; 9
.,7	02725 0	; 9
.,7	02725 0	; 9

.LW DGDSWHU IODQJH IRU QRQ UHWXUQ Y

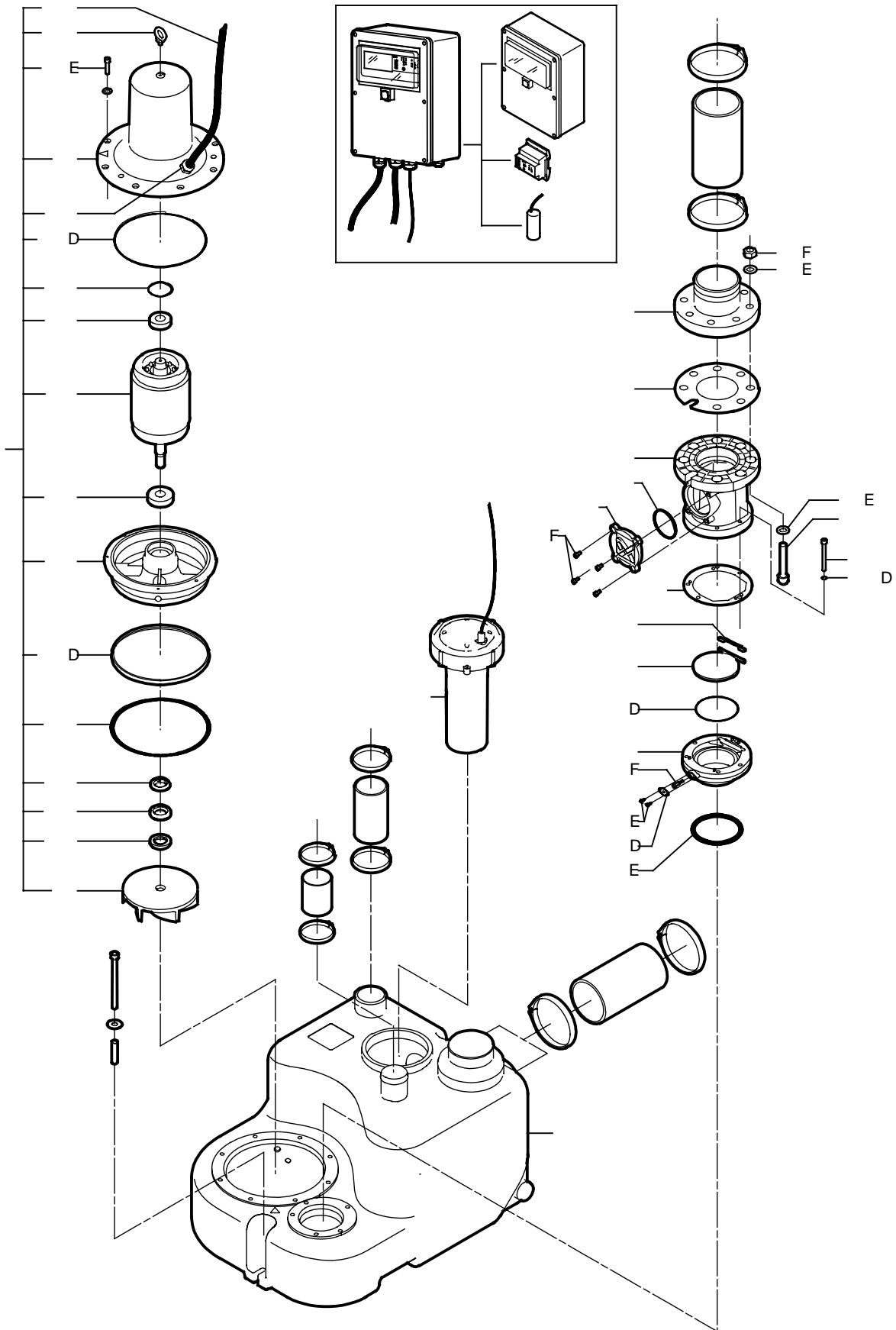
'HVFULSWLRQ NLW 1R
)ODQJH 159
*DVNHW '1
6FUHZ 0 [
:DVKHU
2 ULQJ ' [
6FUHZ 0 ; ',1
:\$6+(5 \$
1XW 0

6HQVRU 5HSODFHPHQW NLW

3RV .LW 1R
.LW 6HQVRU 0XOWLOLIW 066 0 0' 0.

:HDU SDUWV

3RV 'HVFULSWLRQ NLW 1R
E 6FUHZ
F 6FUHZ
G :DVKHU
6HDO ULQJ
6HDO ULQJ
%DOO EHDULQJ
%DOO EHDULQJ
&RUUXJDWHG VSULQJ
D 2 ULQJ
2 ULQJ
D /LS VHDO
2LO 0



08/7,/,)7

0'

/& FRQWUROOHU 5HSODFHPPHQW NLW IRU /&'

3 1 08/7,/,)7	08/7,/,)7	2OG /&'	1HZ /&	'HVFULSWLRQ					
	0'	; 9		.LW /&	ZLWK	VHQVRU	SLSH	DQG	P SUHVXX
	0'	; 9		.LW /&	0Z&WK	VHQVRU	SLSH	DQG	P SUHVXX
	0'	; 9		.LW /&	0Z&WK	VHQVRU	SLSH	DQG	P SUHVXX
	0'	; 9		.LW /&	0Z&WK	VHQVRU	SLSH	DQG	P SUHVXX
	0'	; 9		.LW /&	0Z&WK	VHQVRU	SLSH	DQG	P SUHVXX
	0'	; 9		.LW /&	0Z&WK	VHQVRU	SLSH	DQG	P SUHVXX
	0'	; 9		.LW /&	0Z&WK	VHQVRU	SLSH	DQG	P SUHVXX
	0'	; 9		.LW /&	0Z&WK	VHQVRU	SLSH	DQG	P SUHVXX
	0'	; 9		.LW /&	0Z&WK	VHQVRU	SLSH	DQG	P SUHVXX

&DSDFLWRU

.LW 1R
'HVFULSWLRQ)
&DSDFLWRU

&8 FRQWURO XQLW

.LW 1R
'HVFULSWLRQ 9 9 9
SKDVH SKDVH SKDVH
&8 FRQWURO XQLW

'LVFKDUJH IODQJH

3RV .LW 1R
'LVFKDUJH IODQJH

ORWRU NLWV FRPSOHWH

3 1	'HVFULSWLRQ		
	.,7 02725 0	; 9	
	.,7 02725 0	; 9	
	.,7 02725 0	; 9	
	.,7 02725 0	; 9	
	.,7 02725 0	; 9	
	.,7 02725 0	; 9	
	.,7 02725 0	; 9	

.LW DGDSWHU IODQJH IRU QRQ UHWXUQ YDOYH EDVW LURQ

'HVFULSWLRQ NLW 1R
)ODQJH 159
*DVNHW '1
6FUHZ 0 [

'HVFULSWLRQ NLW 1R

:DVKHU
2 ULQJ ' [
6FUHZ 0 ; ',1
:\$6+(5 \$
1XW 0

6HQVRU 5HSODFHPPHQW NLW

3RV .LW 1R
.LW 6HQVRU 0XOWLOLIW 066 0 0' 0.

7 &RQQHFWRQ

3RV .LW 1R
7 &RQQHFWRQ

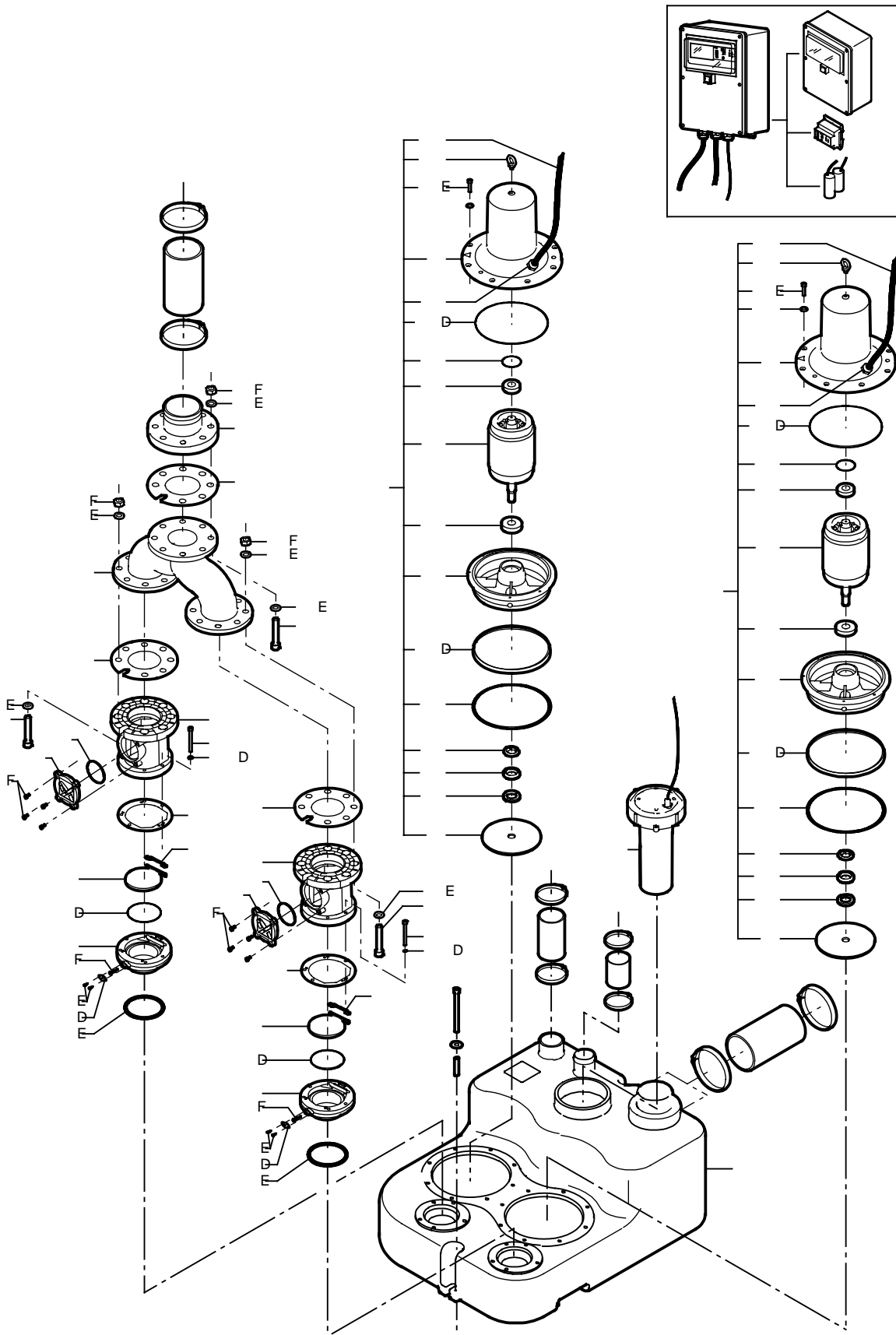
:HDU SDUWV

3RV 'HVFULSWLRQ NLW 1R
E 6FUHZ
F 6FUHZ
G :DVKHU
6HDO ULQJ
6HDO ULQJ
%DOO EHDULQJ
%DOO EHDULQJ
&RUUXJDWHG VSULQJ

2 ULQJ

2 ULQJ
D /LS VHDO
2LO 0

0'



08/7,/,)7

066

+]

/& FRQWUROOHU 5HSODFHPHQW NLW IRU /&

3 1 08/7,/,)7 08/7,/,)7	2OG /& ' 1HZ 3 1	'HVFULSWLRQ
066 ; 9	.LW /&	ZLWK VHQVRU SLSH DQG P SUHVXX
066 ; 9	.LW /&	031WK VHQVRU SLSH DQG P SUHVXX
066 ; 9	.LW /&	0318WK VHQVRU SLSH DQG P SUHVXX

&DSDFLWRU

.LW 1R
'HVFULSWLRQ))
&DSDFLWRU

&8 FRQWURO XQLW

&RQWURO XQLW &8
.LW 1R
'HVFULSWLRQ 9 9 9
VLQJOH SKDVHH SKDVHH SKDVH
&8 FRQWURO XQLW

)ODQJH

3RV .LW 1R
'LVFKDUJH IODQJH

ORWRU NLWV FRPSOHWH

3 1	'HVFULSWLRQ
.,7 02725 0	; 9
.,7 02725 0	; 9

.LW DGDSWHU IODQJH IRU QRQ UHWXUQ YDOYH FDVW LURQ

'HVFULSWLRQ NLW 1R
)ODQJH 159
*DVNHW '1
6FUHZ 0 [
:DVKHU
2 ULQJ ' [
6FUHZ 0 ; ',1
:\$6+(5 \$
1XW 0

6HQVRU 5HSODFHPHQW NLW

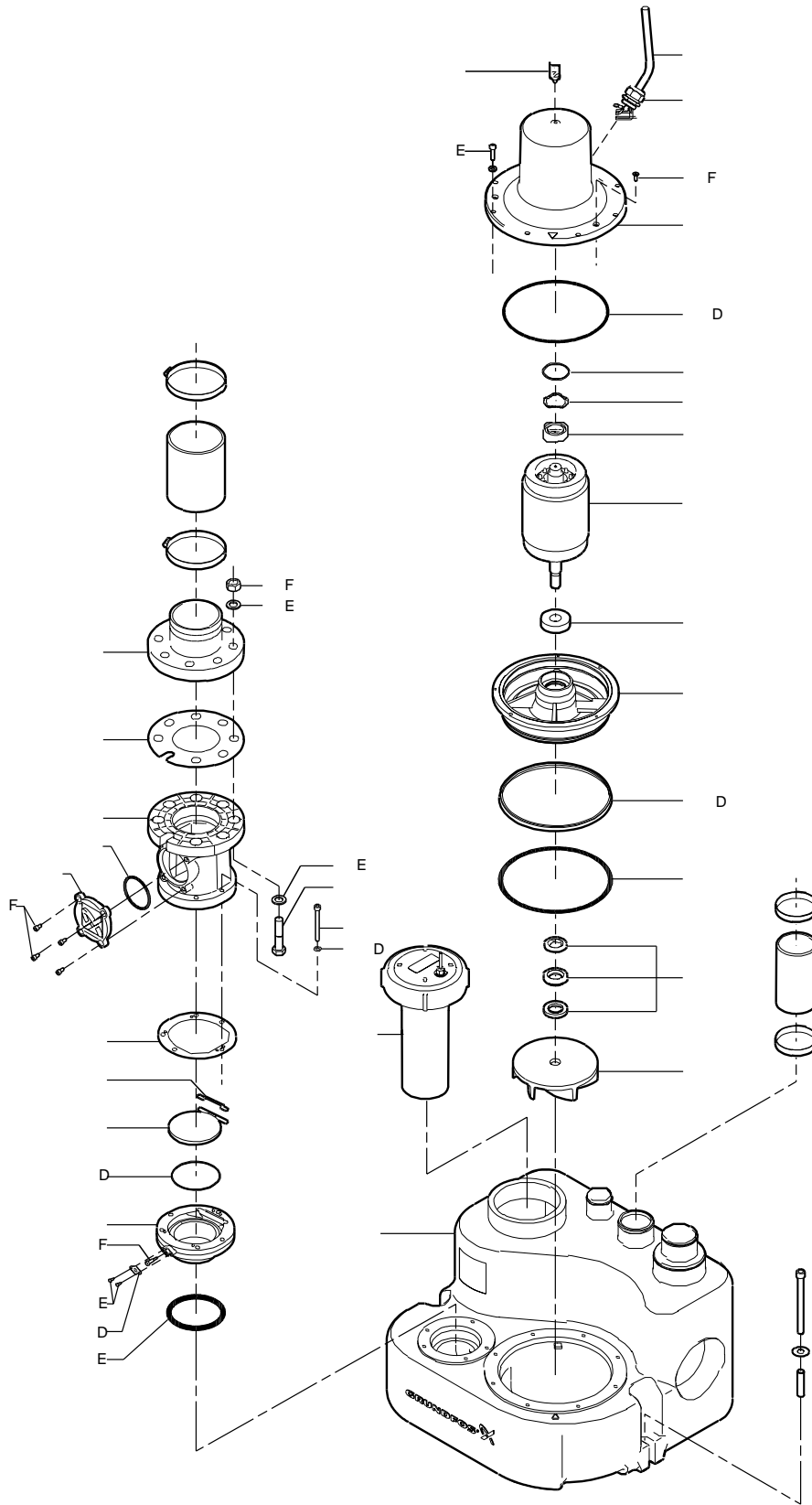
3RV .LW 1R
.LW 6HQVRU 0XOWLOLIW 066 0 0' 0.

:HDU SDUWV

3RV 'HVFULSWLRQ NLW 1R
E 6FUHZ
F 6FUHZ
G :DVKHU
6HDO ULQJ
6HDO ULQJ
%DOO EHDULQJ
%DOO EHDULQJ
&RUUXJDWHG VSULQJ
D 2 ULQJ
2 ULQJ
D /LS VHDO
2LO O

066

08/7,/,)7



08/7,/,)7

0/'

/& FRQWUROOHU 5HSODFHPHQW NLW IRU /&'

3 1 08/7,/,)7 08/7,/,)7	2OG /& ' 1HZ 3 1	'HVFULSWLRQ	
0/' ; 9	.LW /&	ZLWK VHQVRU SLSH DQG	P SUHVXX
0/' ; 9	.LW /&	0 ZL WK VHQVRU SLSH DQG	P SUHVXX
0/' ; 9	.LW /&	0 ZL WK VHQVRU SLSH DQG	P SUHVXX
0/' ; 9	.LW /&	0 ZL WK VHQVRU SLSH DQG	P SUHVXX
0/' ; 9	.LW /&	0 ZL WK VHQVRU SLSH DQG	P SUHVXX
0/' ; 9	.LW /&	0ZLWK VHQVRU SLSH DQG	P SUHVXX
0/' ; 9	.LW /&	0ZLWK VHQVRU SLSH DQG	P SUHVXX
0/' ; 9	.LW /&	0ZLWK VHQVRU SLSH DQG	P SUHVXX
0/' ; 9	.LW /&	0ZLWK VHQVRU SLSH DQG	P SUHVXX

&DSDFLWRU

.LW 1R
 'HVFULSWLRQ))
 &DSDFLWRU

&8 FRQWURO XQLW

.LW 1R
 'HVFULSWLRQ 9 9 9
 SKDVH SKDVH SKDVH
 &RQWURO XQLW

'LVFKDUJH IODQJH

3RV .LW 1R
 'LVFKDUJH IODQJH

ORWRU NLWV FRPSOHWH

3 1	'HVFULSWLRQ	
.,7	02725 0	[9
.,7	02725 0	[9
.,7	02725 0	[9
.,7	02725 0	[9
.,7	02725 0	[9
.,7	02725 0	[9
.,7	02725 0	[9

.LW DGDSWHU IODQJH IRU QRQ UHWXUQ YDOYH FDVW LURQ

'HVFULSWLRQ NLW 1R
)ODQJH 159
 *DVNHW '1
 6FUHZ 0 [
 :DVKHU
 2 ULQJ ' [
 6FUHZ 0 ; ',1
 :\$6+(5 \$
 1XW 0

6HQVRU 5HSODFHPHQW NLW

3RV .LW 1R
 .LW 6HQVRU 08/7,/,)7 0/' 0' 0'9 0N

7 &RQQHFWRQ

3RV .LW 1R
 7 FRQQHFWRQ

:HDU SDUWV

3RV 'HVFULSWLRQ NLW 1R
 E 6FUHZ
 F 6FUHZ
 G :DVKHU
 6HDO ULQJ
 6HDO ULQJ
 %DOO EHDULQJ
 %DOO EHDULQJ
 &RUUXJDWHG VSULQJ
 D 2 ULQJ
 2 ULQJ
 D /LS VHDO
 2LO O

0/1

