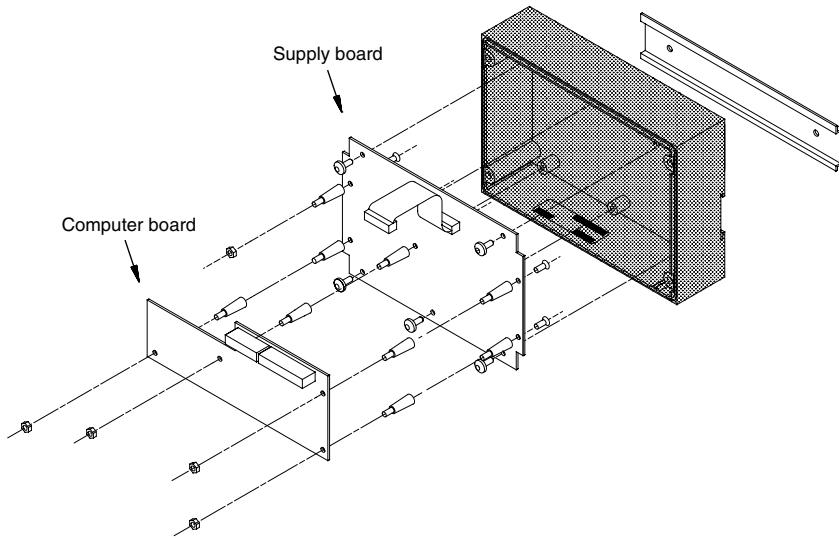


GRUNDFOS INSTRUCTIONS

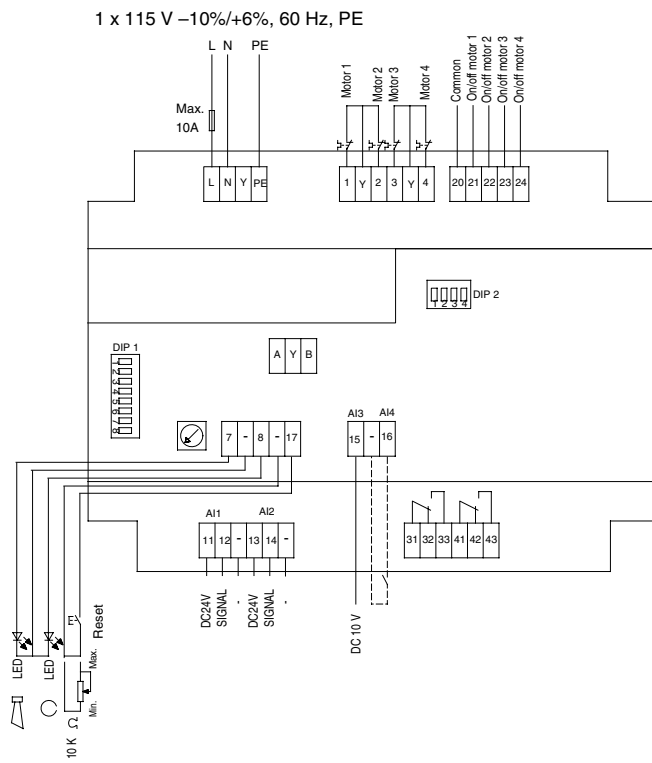
PFU 2000/4, 60 Hz

Ⓒ Installation instructions





TM00 2739 0294



TM01 7635 4799

Terminal designation or number	Function PFU 2000/4	Technical data
L, N, PE	Voltage supply for PFU 2000.	1 x 115 V –10%/+6%, 60 Hz, PE.
A, Y, B	Communication among the units in the GRUNDFOS Pump Management System 2000.	GRUNDFOS bus. RS-485, GRUNDFOS bus protocol.
1 - 4	Analog/digital input for motor protection. Motors 1, 2, 3, 4.	PTC or thermal switch (NC). PTC according to DIN 44081 or 44082.
7	Connection of external LED (fault).	Positive (anode), max. 5 mA.
8	Connection of external LED (operation).	Positive (anode), max. 5 mA.
11 and 13	24 VDC supply for transmitter.	Max. 70 mA.
12	Analog input 1: Actual value in the system. Note: In systems without PMU 2000, pressure transmitters with the following possible signal values are typically used: 0-10 V, 0-20 mA and 4-20 mA. In systems with PMU 2000, pressure, differential-pressure or temperature transmitters can be used.	0-10 V, 0-20 mA, 4-20 mA. NTC 50: Measuring range: –25 °C to +50 °C. Resistance value at 25 °C: 30 kΩ. NTC 150: Measuring range: 0 °C to +150 °C. Resistance value at 25 °C: 100 kΩ.
14	Analog input 2: Input for pressure, pre-pressure, flow-pipe and return-pipe temperature measuring. Note: In all systems without PMU 2000, this input is always used for pre-pressure measuring. The input signal can be inverted by means of the DIP 1 contact 4.	0-10 V, 0-20 mA, 4-20 mA. On/off contact (digital). NTC 50: Measuring range: –25 °C to +50 °C. Resistance value at 25 °C: 30 kΩ. NTC 150: Measuring range: 0 °C to +150 °C. Resistance value at 25 °C: 100 kΩ.
15	Analog input 3: Signal for remote setting of setpoint. Note: In systems without PMU 2000, only 0-10 VDC can be used.	0-10 VDC. 0-20 mA. 4-20 mA.
16	Digital input 4 (without PMU 2000): For pressure boosting and water supply applications, input 4 is laid out for a flow switch. For heating, air-conditioning and ventilation systems, input 4 is laid out for an external on/off switch.	Max. contact load: 12 V / 12 mA.
17	Connection of external reset button, for instance in the front cover of the control cabinet, or external potentiometer for the setting of setpoint.	Max. contact load: 12 V / 12 mA.
20	Contact coil voltage.	
21, 22, 23, 24	On/off of motors 1, 2, 3, 4. Mains operation.	Max. contact load: 250 V / 8 A, AC1.
31 - 33	Fault signal relay.	Potential-free changeover contacts. Max. contact load: 250 V / 0.5 A, AC1.
41 - 43	Operating signal relay.	Potential-free changeover contacts. Max. contact load: 250 V / 0.5 A, AC1.

BE > THINK > INNOVATE >

Being responsible is our foundation
Thinking ahead makes it possible
Innovation is the essence

96 46 71 55 0902	GB
Repl. V7 17 48 34 0601	

www.grundfos.com

GRUNDFOS 